



.mdd

FABRICS

NEMO

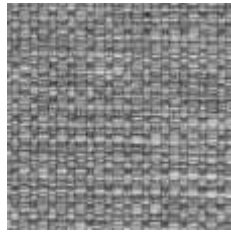
Group I



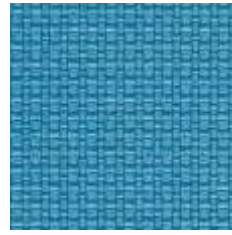
NE-16



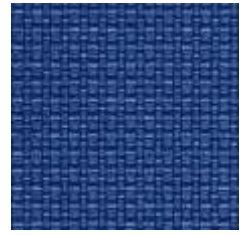
NE-14



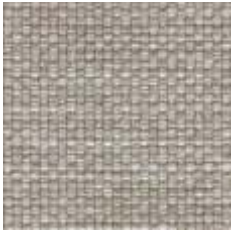
NE-10



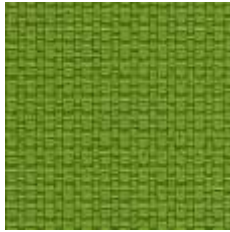
NE-17



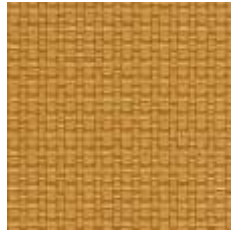
NE-15



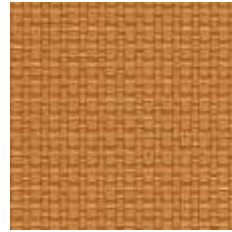
NE-1



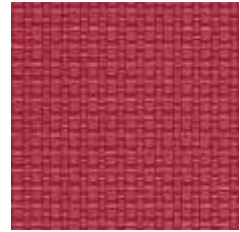
NE-9



NE-2



NE-3



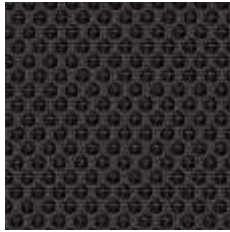
NE-5

RUNNER

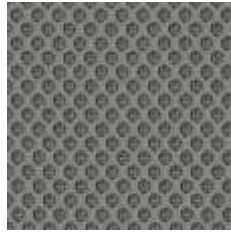
Group II



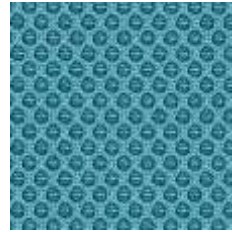
R-60999



R-60025



R-60011



R-66063



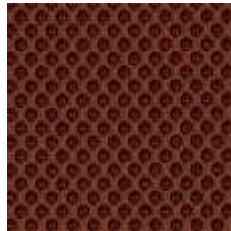
R-66064



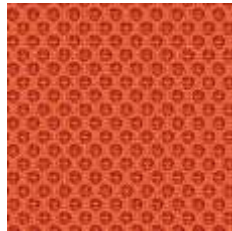
R-61128



R-68056



R-61130



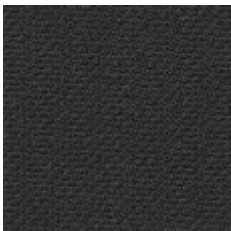
R-63034



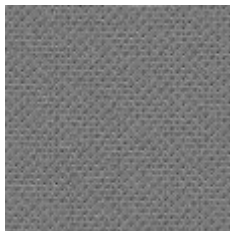
R-64089

ATLANTIC

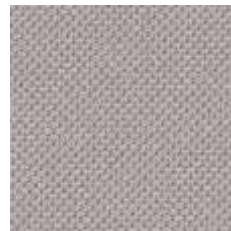
Group II



A-60025



A-60011



A-60141



A-65037



A-66064



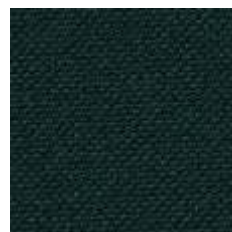
A-61078



A-62048



A-67030



A-67043

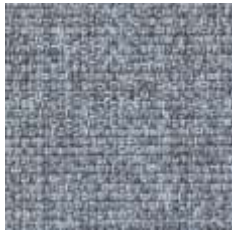


A-64089

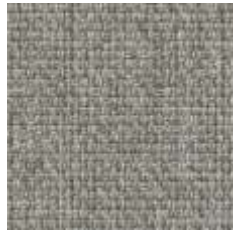
MEDLEY



M-60999



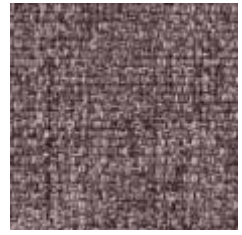
M-66008



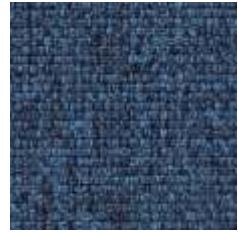
M-60003



M-61189



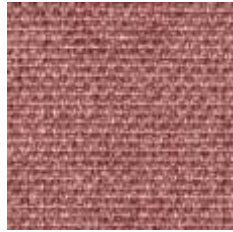
M-65011



M-66010



M-67006



M63064



M-63017



M-64019



M-68005



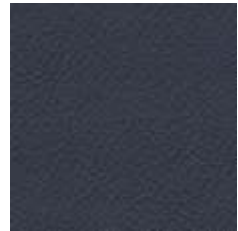
M-62054



M-62002

Group II

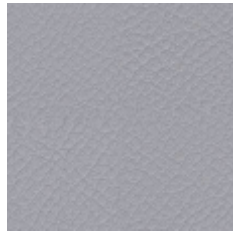
VITA



V-07



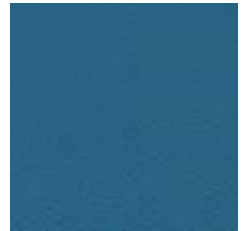
V-04



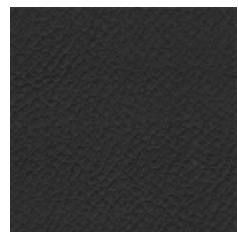
V-29



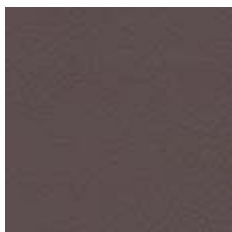
V-18



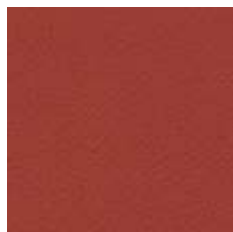
V-19



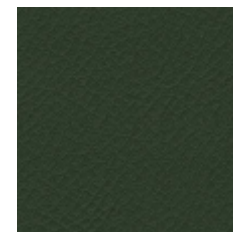
V-12



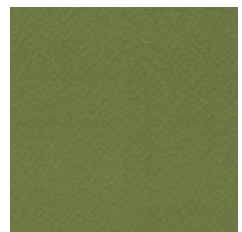
V-10



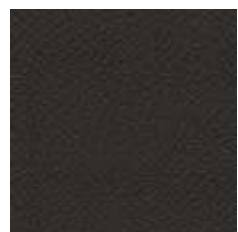
V-11



V-29



V-09



V-13



V-02

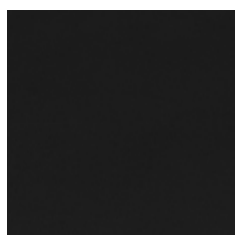


V-03

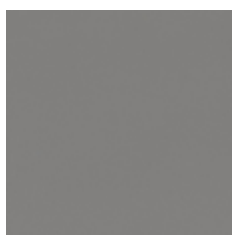
Group II

CHARLES

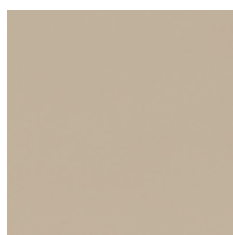
Group II



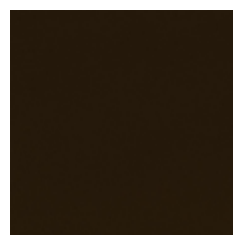
C-01



C-05



C-06



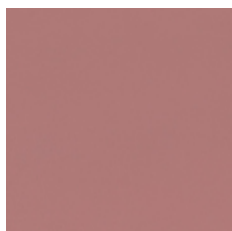
C-14



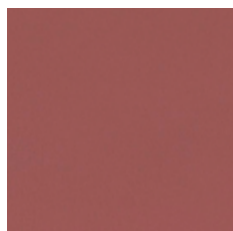
C-18



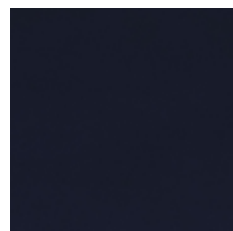
C-21



C-30



C-31



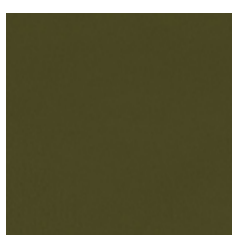
C-32



C-35



C-41



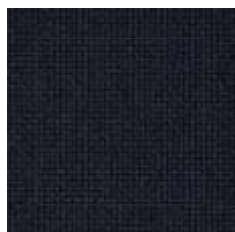
C-44



C-45

GO CHECK

Group II



G-66134



G-66140



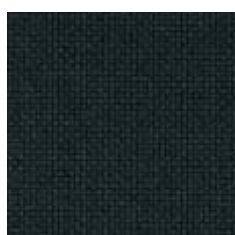
G-66138



G-66137



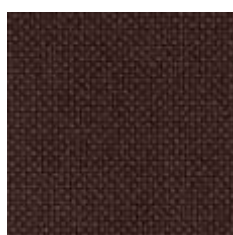
G-66136



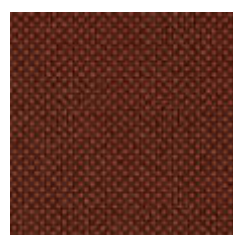
G-68149



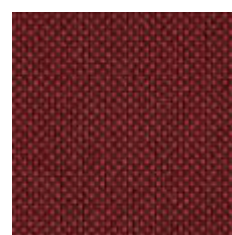
G-68152



G-61145



G-61144



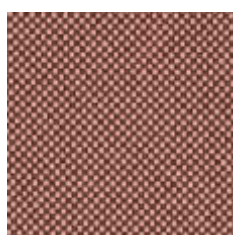
G-64172



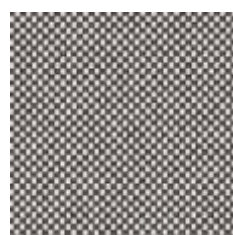
G-64171



G-63079



G-64183



G-60079

MICA



MC-01



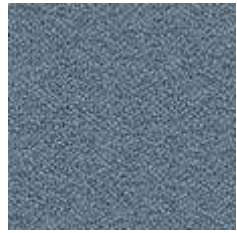
MC-02



MC-03



MC-04



MC-05



MC-06



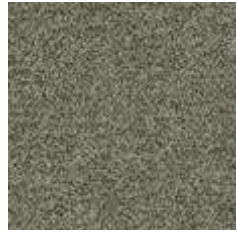
MC-07



MC-08



MC-09



MC-10



MC-11



MC-12



MC-13



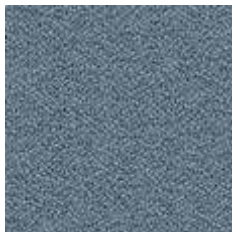
MC-14



MC-15



MC-16



MC-17



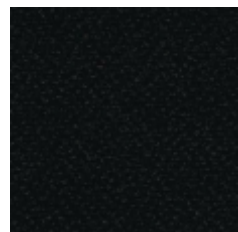
MC-18



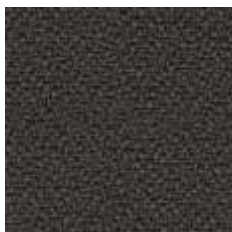
MC-19

Group II

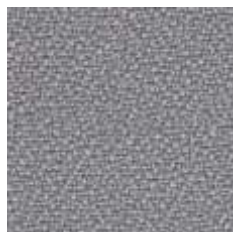
XTREME CS



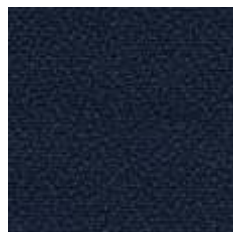
XR009



XR081



XR094



XR026

Group III



XR420



XR108

XTREME YS

Group III



YS030



YS076



YS072



YS071



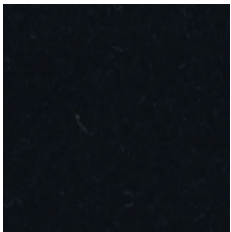
YS100



YS045

SYNERGY

Group III



LDS27



LDS29



LDS20



LDS08



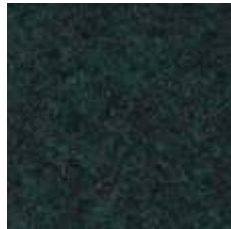
LDS61



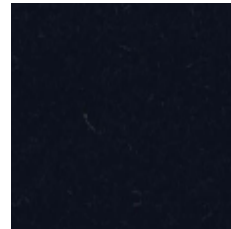
LDS53



LDS50



LDS60



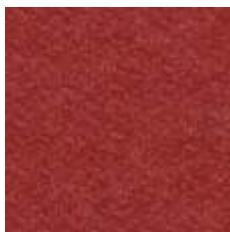
LDS69



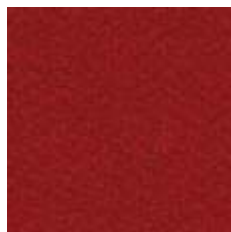
LDS57



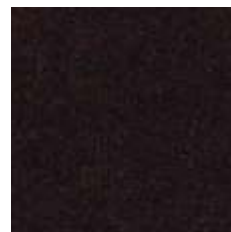
LDS84



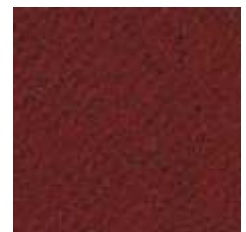
LDS85



LDS86



LDS88



LDS79



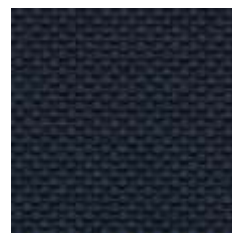
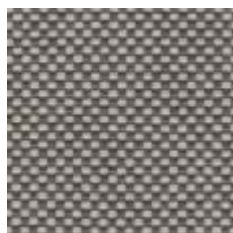
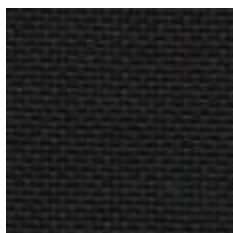
LDS19



LDS44

FIELD 2

Group IV



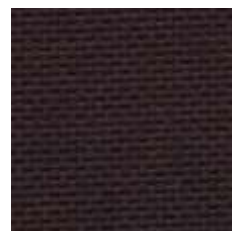
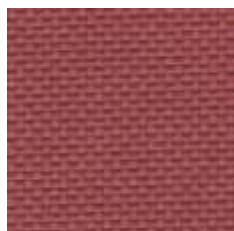
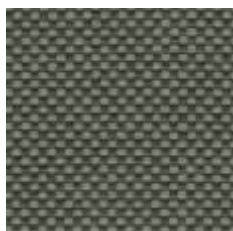
FD-192

FD-142

FD-132

FD-123

FD-782



FD-963

FD-463

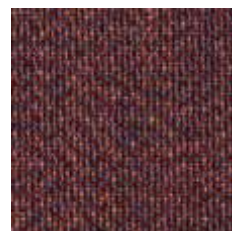
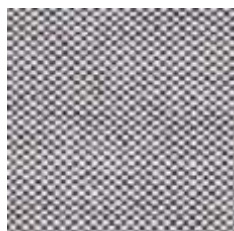
FD-662

FD-673

FD-693

ATLAS

Group IV



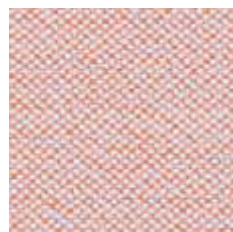
AS-391

AS-111

AS-161

AS-781

AS-681



AS-981

AS-971

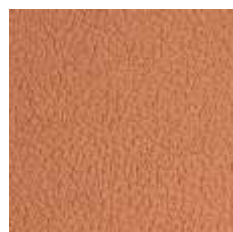
AS-531

AS-501

AS-651

LEATHER

Group IV



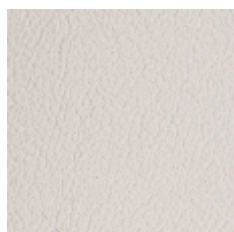
L01

L02

L03

L04

L05



L06

L07

Price group	Fabric	Material	Weight	Abrasion resistance rubs	Pilling resistance	Colour fastness to light	Colour fastness to rubbing	Flammability	More information
I	NEMO	Polyester 100%	366g/m2	PN-EN ISO 12947 - 2:2 100,000	Scale 1-8, max 8, PN-EN ISO 105 B02:2013 3-4	Scale 1-5, max 5, PN-EN 1021 - 2:2007, PN-EN 1021 - 1:2007	Scale 1-5, max 5, EN ISO 105x12, (wet/dry) 4-5		
II	RUNNER	Polyester 100%	320g/m2, 510g/lm	70,000 Martindale, BS EN 14465, EN ISO 12947-2	Scale 1-5, max 5, EN ISO 12945-2 4-5	Scale 1-8, max 8, EN ISO 105-B02 5-7	Scale 1-5, max 5, EN ISO 105x12, (wet/dry) 4-5	BS EN 1021-2 Match, BS EN 1021-1 Cigarette, California Bulletin CAL 117-E-Class 1, CA TB 117-2013, Class Uno UNI 9175 Class 1	Acoustic test sound absorption ISO 354
II	MEDLEY	Polyester 100%	364g/m2, 510g/lm	75,000 Martindale	Scale 1-5, max 5, EN ISO 12945-2 4	Scale 1-8, max 8, EN ISO 105-B02 5-7	Scale 1-5, max 5, EN ISO 105x12, (wet/dry) 4-5/4-5	BS EN 1021-2 Match, BS EN 1021-1 Cigarette, California Bulletin CAL 117-E-Class 1, CA TB 117-2013, Class Uno UNI 9175 Class 1	Acoustic test sound absorption: ISO 354
II	ATLANTIC	Polyester 100%	353g/m2, 530g/lm	110,000 Martindale, EN ISO 12947-2)		Scale 1-8, max 8, EN ISO 105-B02 5-7	Scale 1-5, max 5, EN ISO 105x12, (wet/dry) 4-5/4-5	BS EN 1021-2 Match, BS EN 1021-1 Cigarette, ASTM E 84, BS 476 Part 7, Class Uno UNI 9175 Class 1, NF P 92-503 M3P, CA TB 117-2013	
II	VITA	Surface: PVC, 98.5%, PU 1.5% Substrate: Polyester 50%, 50% Cotton	850g/m2, 1190g/lm	100,000 Martindale, EN ISO 5470-2:2003,		Scale 1-8, max 8, EN ISO 105-B02 5-7	Scale 1-5, max 5, EN ISO 105x12, (wet/dry) 4-5/4-5	BS EN 1021-2 Match, BS EN 1021-1 Cigarette, BS 5852:2006 Section 4, Ignition Source 5, BS 7176:2017 Medium Hazard NF P 95 503 M2, FMVSS 302 (ISO 3795)	Flexing cycles: BS EN ISO 7854:1997 Method B, 400,000, Anti-microbial/ Anti-fungal: AATCC 147:2011
II	CHARLES	Polyester 100%	433g/m2	90,000 Martindale, EN ISO 12947-2	Scale 1-5, max 5, EN ISO 12945-2 5	EN ISO 105-B02 5	Scale 1-5, max 5, EN ISO 105-X12, (wet/dry) 4-5	EN1021-2	Thread offset in the seam: EN ISO 13 936-2
II	GO CHECK	Trevira cs 100%	310g/m2	80,000 Martindale, EN ISO 12947-1,2 60,000 Double rubs wyzenbeek (ASTM D4157-07)	Scale 1-5, max 5, EN ISO 12945-2 5	Scale 1-8, max 8, EN ISO 105-B02 5-8	Scale 1-5, max 5, EN ISO 105-X12:2001, (wet/dry) 4-5/4-5	BS EN 1021-1&2 Cigarette and Match, BS 5852:2006 Crib 5, BS 7176:2017 Medium Hazard, NFP 92-503/504/505 M1, Class Uno UNI 9175 Class 1	
II	MICA	97% post-consumer recycled polyester / 3% polyester	218g/m2	60,000 Martindale, EN ISO 12947-2 100,000 Double rubs wyzenbeek (ASTM D4157-07)	Scale 1-5, max 5, EN ISO 12945-2 4-5	Scale 1-8, max 8, EN ISO 105-B02 5-8	Scale 1-5, max 5, EN ISO 105-X12:2001, (wet/dry) 4-5/4-5	BS EN 1021-1 Cigarette, EN ISO 105-X12:2001, (wet/dry) 4-5/4-5, CA TB 117-2013, ASTM E 84 Class 1, BS 476 Part 7 Class 1	Acoustic test air flow resistanc EN 29053 & ISO 9053-1 (airflow resistance)
III	XTREME CS / YS	Trevira Clame 100% (CS), Recycled 100% (YS), Non metallic dyestuffs, Flame Retardant polyester	310g/m2 435g/lm	60,000 Martindale		ISO 105 B02: 6	ISO 105-X12:2001, (wet/dry) 4/4	BS EN 1021-2 Match, BS EN 1021-1 Cigarette, BS 7176 Low Hazard NF P92-507 M1, DIN 4102 B1, UNI 9175 Classe 1 IM, UNI 8456, UNI 9174 & UNI 9177 Classe Uno, ÖNORM B 3825 & A 3800-1, NF D 60-013 (only CS)	
III	SYNERGY	Virgin Wool 95%, Polyamide 5%	400g/m2 560g/lm	100,000 Martindale		ISO 105 B02: 5	ISO 105-X12:2001, (wet/dry) 4/4	BS EN 1021-2 Match, BS EN 1021-1 Cigarette, BS 7176 Low Hazard, UNI 9175 Classe 1 IM, ÖNORM B 3825 & A 3800-1	
IV	FIELD 2	100% Trevira CS	321g/m2 450g/lm	100,000 Martindale EN ISO 12947	EN ISO 12945-2 4-5	ISO 105 B02: 5-7		BS EN 1021-2 Match, BS EN 1021-1 Cigarette, BS 5852 Crib 5, DIN 4102 B1 FAR 25.853, CA TB 117-2013, MED. Certificate IMO, NF P 92 507 M1, UNI 9177 classe 1, US Cal. Bull. 117-2013	
IV	ATLAS	New wool 90% Nylon 10%	286g/m2 400g/lm	100,000 Martindale EN ISO 12947	EN ISO 12945-2 4-5	ISO 105 B02: 6-7	ISO 105-X12:2001, (wet/dry) 4-5/4-5	BS EN 1021-2 Match, BS EN 1021-1 Cigarette, BS 5 5852 Crib 5, BS 5852 Ignition source 3, BS 5852 Part 1, NF D 60 013, UNI 9175 1IM, US Cal. Bull. 117-2013, MED. CertificateIMO	
IV	LEATHER	Leather type - corrected grain leather Type of finishing - pigmented leather		Dry: 500 cycles - min. 4 grey scale Wet: 250 cycles - min. 4 grey scale UNI EN ISO 11640		Light fastness: min. 4 grey scale UNI ISO 105-802		Match flame test: No ignition UNI EN 1021-1-2006 BS EN 1021-1-2006	