



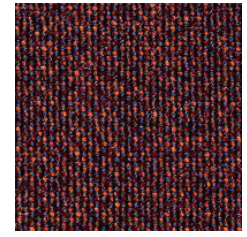
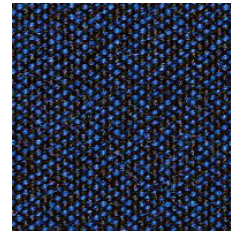
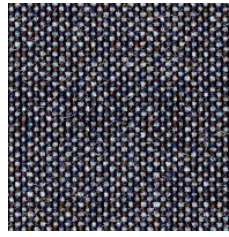
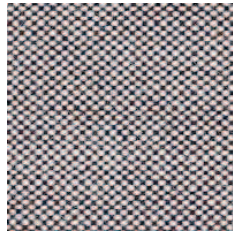
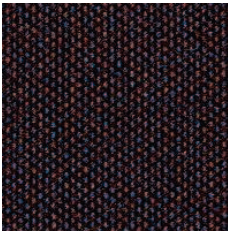
**.mdd**

---

**FABRICS  
PREMIUM**

## ATLAS

## Group IV



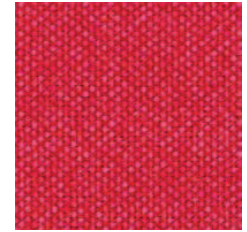
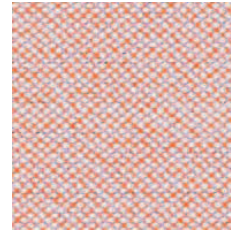
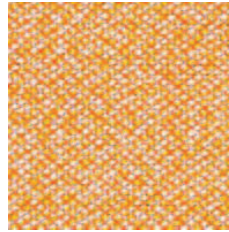
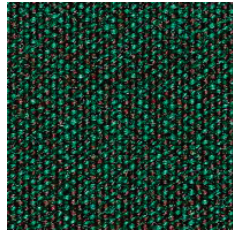
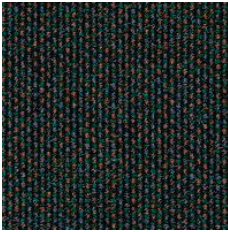
AS-391

AS-111

AS-161

AS-781

AS-681



AS-981

AS-971

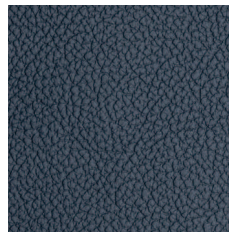
AS-531

AS-501

AS-651

## LEATHER

## Group IV



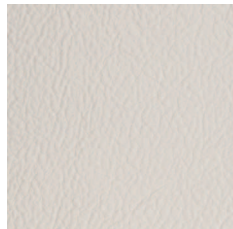
L01

L02

L03

L04

L05



L06

L07

Price group	Fabric	Material	Weight	Abrasion resistance rubs	Pilling resistance	Colour fastness to light	Colour fastness to rubbing	Flammability	More information
IV	ATLAS	New wool 90% Nylon 10%	286g/m2 400g/lm	100,000 Martindale EN ISO 12947	EN ISO 12945-2 4-5	ISO 105 B02: 6-7	ISO 105-X12:2001, (wet/dry) 4-5/4-5	BS EN 1021-2 Match, BS EN 1021-1 Cigarette, BS 5 5852 Crib 5, BS 5852 ignition source 3, BS 5852 Part 1, NF D 60 013, UNI 9175 11M, US Cal. Bull. 117-2013, MED. CertificateIMO	
IV	LEATHER	Leather type - corrected grain leather Type of finishing - pigmented leather		Dry: 500 cycles - min. 4 grey scale Wet: 250 cycles - min. 4 grey scale UNI EN ISO 11640		Light fastness: min. 4 grey scale UNI ISO 105-802		Match flame test: No ignition UNI EN 1021-1-2006 BS EN 1021-1-2006	

Attention

Colours and decors structure of shown material may differently from the reality.