

Fabrics & Finishings 2023

Oddajemy w Państwa ręce poszerzony wzornik tkanin. Odświeżona paleta oferty standardowej tworzy nowy nastrój kolorystyczny marki Profim, a pełne karty (producenckie) wybranych tkanin pozwalają na dobór idealnego dla mebla odcienia. Tworzenie harmonijnych wnętrz jest teraz jeszcze łatwiejsze.

We would like to present a book of our extended fabric collection. The refreshed palette of the standard offer creates a new colour concept for the Profim brand and full (fabric producer's) cards of selected fabrics enable the selection of an ideal shade to match the furniture. Creating harmonious interiors is now even easier.

Wir freuen uns unsere erweiterte Stoffkollektion vorstellen zu können. Das Standardangebot wurde überarbeitet und aufgefrischt und durch ausgewählte Stoffe (jeweils gesamte Farbkarte) der Hersteller erweitert. Dadurch lassen sich Räume noch individueller gestalten.

Grupa Cenowa / Price Group / Preisgruppe	Nazwa Tkaniny / Fabric Name / Stoffe	Standard Collection
1	Alba	3005 • 6005 • 6026 • 6031 • 7026 • 8003 • 8010 • 8078
	Evo	EV-1 • EV-2 • EV-5 • EV-10 • EV-11 • EV-14 • EV-24 • EV-25
	Next	NX-1 • NX-7 • NX-10 • NX-11 • NX-12 • NX-14 • NX-15 • NX-16
2	Cura	60110 • 60999 • 61168 • 62083 • 66167 • 66170 • 68182 • 68186
	Softline	SL-10 • SL-16 • SL-18 • SL-19 • SL-21 • SL-27 • SL-28
	Sprint	PS004 • PS010 • PS028 • PS030 • PS033 • PS039 • PS040 • PS041
	Valencia™	107-0002 • 107-0034 • 107-2107 • 107-2116 • 107-4003 • 107-4042 • 107-4045 • 107-9035
	Velvet	Copper 126 • Emerald 184 • Eucalyptus 193 • Lavender 71 • Navy 49 • Niagara 158 • Ocre 23 • Winered 39
	Xtreme	YS009 • YS026 • YS047 • YS079 • YS081 • YS094 • YS096 • YS136
3	Oceanic	OOC01 • OOC04 • OOC06 • OOC08 • OOC11 • OOC12 • OOC13 • OOC16
	Select	60132 • 60999 • 61186 • 62097 • 65117 • 67097 • 67098 • 68210
	Step	60090 • 60091 • 60999 • 62057 • 63075 • 66152 • 67004 • 68161
	Synergy	LDS08 • LDS16 • LDS17 • LDS49 • LDS56 • LDS62 • LDS73 • LDS74
4	Skóra / Leather / Leder	S-10 • S-16 • S-18 • S-19 • S-21 • S-27 • S-28
5	Skóra / Leather / Leder Premium	2180 • 2760 • 2840 • 2845 • 2875 • 2900
	Rhythm	Rhythm 60165 • Rhythm 60176 • Rhythm 60999 • Rhythm 63067 • Rhythm 66152 • Rhythm 68121
	Runner	Runner 60011 • Runner 60061 • Runner 60999
	String	String 60118 • String 60999

Wykończenia / Finishes / Oberflächen

Alba
Evo
Next



Standard Collection profim

Alba grupa cenowa 1

3005	7026
6005	8003
6026	8010
6031	8078

Extended Collection

Wszystkie kolory poza standardowymi dostępne są z terminem realizacji 6-8 tygodni. Szczegóły wyceny dostępne są u właściwego RDS (Regionalnego Dyrektora Sprzedaży).



4007



4027



4004



4030



3005



2036



2005



1006



1011



5004



6005



6026



6071



6080



6098



6007



6031



7026



7011



7013



7029



8078



8003



8010



8033

Standard Collection

① **Evo**



COMPOSIZIONE
100% Poliestere

PESO
450 ± 5% g/ml
320 ± 5% g/m²

ALTEZZA
140 ± 2% cm

RESISTENZA ALL'ABRASIONE
(Martindale)
UNI EN ISO 12947/2
100.000 ± 10% cicli

PILLING
UNI EN ISO 12945/2
5 (foto standard)
Tolleranza: da 4 a 5

SOLIDITÀ ALLA LUCE
UNI EN ISO 105-B02
6 (scala blu)
Tolleranza: da 5 a 8

SOLIDITÀ ALLO SFREGAMENTO
UNI EN ISO 105-X12
4/5 (scala grigi)
Tolleranza: da 4 a 5

REAZIONI AL FUOCO
Può superare:
EN 1021/1-2
CRIB 5
BS 7176 Medium Hazard
California TB117
UNI 9175 Class 1IM

Il grado di resistenza al fuoco dipende dal tipo di schiuma utilizzata

COLORE
Leggere differenze di colore fra una partita e l'altra sono da considerarsi normali

MANUTENZIONE E LAVAGGIO



COMPOSITION
100% Polyester

WEIGHT
450 ± 5% g/ml
320 ± 5% g/m²

WIDTH
140 ± 2% cm

ABRASION RESISTANCE
(Martindale)
UNI EN ISO 12947/2
100.000 ± 10% rubs

PILLING
UNI EN ISO 12945/2
5 (standard pictures)
Tolerance: from 4 to 5

LIGHT FASTNESS
UNI EN ISO 105-B02
6 (blue scale)
Tolerance: from 5 to 8

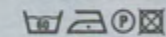
FASTNESS TO RUBBING
UNI EN ISO 105-X12
4/5 (grey scale)
Tolerance: from 4 to 5

FLAMMABILITY
Can meet:
EN 1021/1-2
CRIB 5
BS 7176 Medium Hazard
California TB117
UNI 9175 Class 1IM

Flame retardant performance is dependent upon the foam used

COLOUR
Slight color differences between one lot and another have to be considered within commercial tolerance

CLEANING AND WASHING



COMPOSITION
100% Polyestere

POIDS
450 ± 5% g/ml
320 ± 5% g/m²

LARGEUR
140 ± 2% cm

RÉSISTANCE À L'ABRASION
(Martindale)
UNI EN ISO 12947/2
100.000 ± 10% tours

PILLING
UNI EN ISO 12945/2
5 (photos standard)
Tolérance: de 4 à 5

SOLIDITÉ À LA LUMIÈRE
UNI EN ISO 105-B02
6 (échelle des bleu)
Tolérance: de 5 à 8

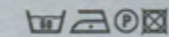
SOLIDITÉ AU FROTTEMENT
UNI EN ISO 105-X12
4/5 (échelle des gris)
Tolérance: de 4 à 5

CLASSEMENT AU FEU
Peut surmonter:
EN 1021/1-2
CRIB 5
BS 7176 Medium Hazard
California TB117
UNI 9175 Class 1IM

Performance de flammabilité dépend de la mousse utilisée

COLORIS
Légères différences de couleur entre un lot et l'autre doivent être considérés comme étant normales

NETTOYAGE ET LAVAGE



ZUSAMMENSETZUNG
100% Polyestere

GEWICHT
450 ± 5% g/ml
320 ± 5% g/m²

BREITE
140 ± 2% cm

SCHUEYERFESTIGKEIT
(Martindale)
UNI EN ISO 12947/2
100.000 ± 10% Scheuertouren

PILLING
UNI EN ISO 12945/2
5 (standard Bilder)
Toleranz: von 4 bis 5

LICHTECHTHEIT
UNI EN ISO 105-B02
6 (Blaumaßstabe)
Toleranz: von 5 bis 8

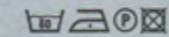
REIBECHTHEIT
UNI EN ISO 105-X12
4/5 (Graumaßstabe)
Toleranz: von 4 bis 5

FEUERSICHERUNG
Überwunden:
EN 1021/1-2
CRIB 5
BS 7176 Medium Hazard
California TB117
UNI 9175 Class 1IM

Schwerentflammbarkeit hängt von verwendetem schaum ab

FARBABWEICHUNGEN
Leichte Farbunterschiede sind zwischen zwei Partien als normal zu betrachten

REINIGUNG UND WASCHEN

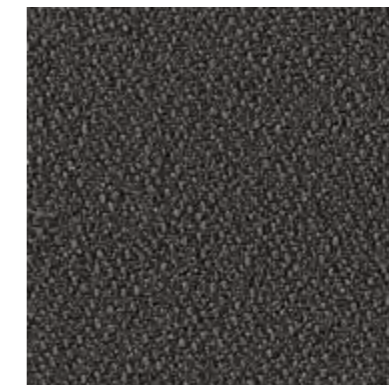


ED. 01

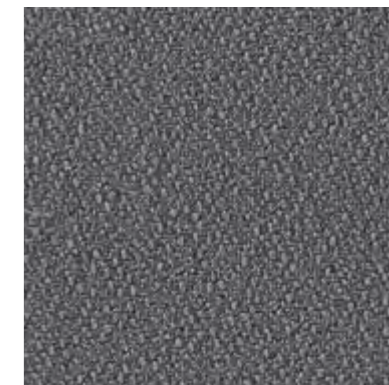
FIDIVI TESSITURA VERGNANO S.p.A.
Regione Masio 19 bis 10046 Poirino (TO) ITALY
tel. +39 0119430662 fax +39 0119430478
www.fidivi.com info@fidivi.com



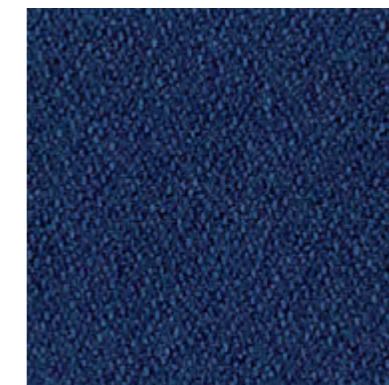
EV-11



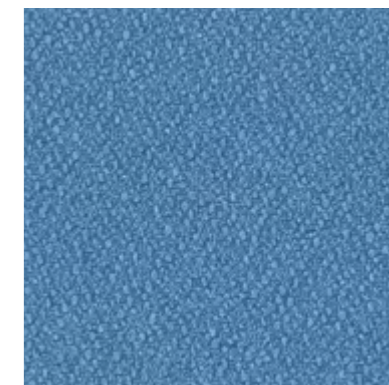
EV-1



EV-14



EV-10



EV-25



EV-5



EV-2



EV-24

Evo¹

Extended Collection

Standard Collection

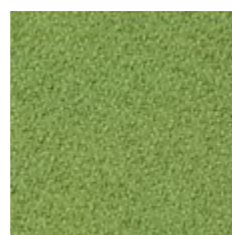
Next¹



EV-4



EV-19



EV-20



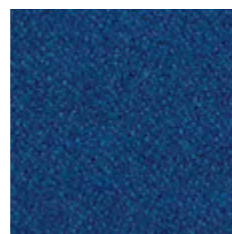
EV-18



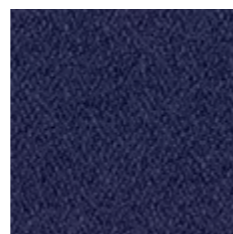
EV-23



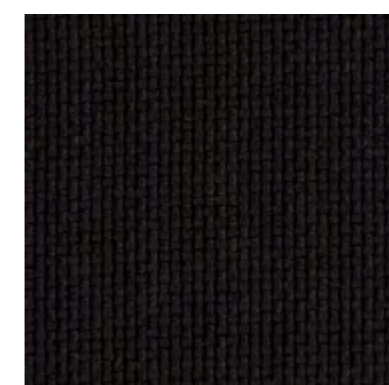
EV-21



EV-9



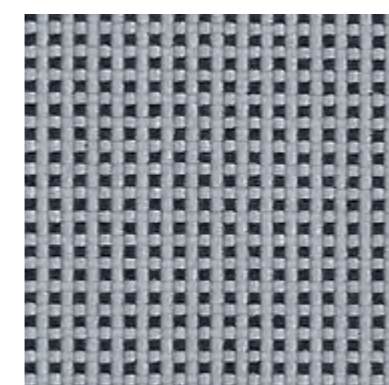
EV-22



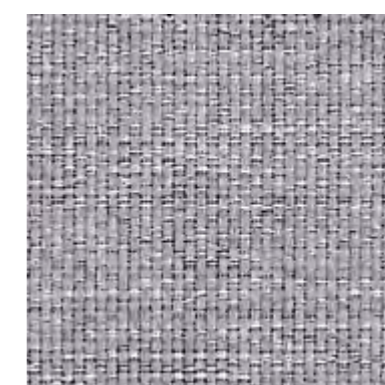
NX-16



NX-14



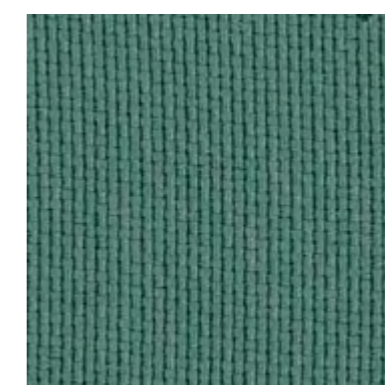
NX-12



NX-10



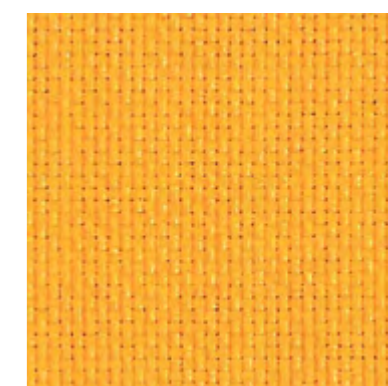
NX-15



NX-11



NX-7



NX-1

PL

Skład:
100% poliester

Gramatura:
320 g/m²

Odporność na ścieranie: 180000 cykli Martindale'a (BS EN ISO 12947-2), **Odporność na piling:** 5 (PN-EN ISO 12945-2), **Trudnozapałność – papieros:** EN 1021-1, **Trudnozapałność – zapalka:** EN 1021-2, **Odporność na światło:** 4-5 (EN ISO 105-B02), **Oznaczenie formaldehydu:** PN-EN ISO 14184-1, **Odporność barwy na rozpuszczalniki organiczne:** 5 (PN-EN ISO 105-X-05), **Odporność barwy na działanie potu:** 5 (PN-EN ISO 105-E04), **Oznaczenie zawartości związków azowych:** PN-EN 14362-1, **Odporność barwy na tarcie:** 4-5 (PN-EN ISO 105-X12), **Odporność na przesunięcie w szwie:** 4 mm, kat. A (PN-EN ISO 13936-2), **Odporność barwy na płamienie wodą:** 5 (BS EN ISO 105 E16)

Pielęgnacja:

- czyszczenie chemiczne: dopuszcza się użycie nadchloru etylenu oraz wodnego roztworu węgla fluoru,
- czyszczenie mechaniczne: czyścić na całej powierzchni szmatką zwilżoną wodą

EN

Composition:
100% polyester

Weight:
320 g/m²

Abrasion resistance: 180000 Martindale cycles (BS EN ISO 12947-2), **Pilling resistance:** 5 (PN-EN ISO12945-2), **Flammability – cigarette:** EN 1021-1, **Flammability – match:** EN 1021-2, **Light fastness:** 4-5 (EN ISO 105-B02), **Determination of formaldehyde:** PN-EN ISO 14184-1, **Colour fastness to organic solvents:** 5 (PN-EN ISO 105-X05), **Colour fastness to perspiration:** 5 (PN-EN ISO 105-E04), **Determination of azo dyes:** PN-EN 14362-1, **Colour fastness to rubbing:** 4-5 (PN-EN ISO 105-X12), **Slippage resis-tance:** 4 mm cat. A (PN-EN ISO 13936-2), **Colour fastness to water spotting:** 5 (BS EN ISO 105 E16)

Maintenance:

- dry cleaning: with tetrachloroethylene and water solution of carbonate fluoride,
- mechanical cleaning: clean on the whole surface with a damp cloth

DE

Zusammensetzung:
100% Polyester

Gewicht:
320 g/m²

Scheuerfestigkeit: 180000 Martindale Scheuertouren (BS EN ISO12947-2), **Peelingfestigkeit:** 5 (PN EN ISO 12945-2), **Brandschutz – Zigarettentest:** EN 1021-1, **Brandschutz – Streichholztest:** EN 1021-2, **Lichtechtheit:** 4-5 (EN ISO 105-B02), **Bestimmung des Gehaltes an Formaldehyd:** PN-EN ISO 14184-1, **Farbechtheit gegen organische Lösemittel:** 5 (PN-EN ISO 105-X05), **Farbechtheit gegen Schweiß:** 5 (PN-EN ISO 105-E04), **Nachweis der Verwendung bestimmter Azofarbstoffe mit und ohne Extraktion der Faser:** PN-EN 14362-1, **Farbechtheit gegen Reiben:** 4-5 (PN-EN ISO105-X12), **Verfahren mit festgelegter Kraft:** 4 mm kat. A (PN-EN ISO13936-2), **Farbechtheit gegen Wasserflecken auf Möbelbezugsstoffen:** 5 (BS EN ISO 105 E16)

Reinigung:

- chemische Reinigung: Flecken mit Enzymmittel behandeln
- mechanische Reinigung: nicht nur Flecken sondern die ganze Stofffläche mit einem Tuch anfeuchten und abwischen

Przedstawione wzory wykończeń nie stanowią oferty w rozumieniu Kodeksu Cywilnego. W ramach stałego doskonalenia produktów firma zastrzega sobie prawo do wprowadzania zmian w ofercie.

The offer presented in the pattern book is not a valid legal offer. In policy of continuous product improvement our company reserves right to make changes at any time without prior notice.

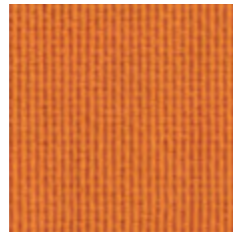
Dieser Katalog ist kein Angebot im rechtlichen Sinn. Wir behalten uns Änderungen der Produkten im Sinne einer technischen Entwicklung oder Änderungen in Form und Farbe vor.

Next¹

Extended Collection



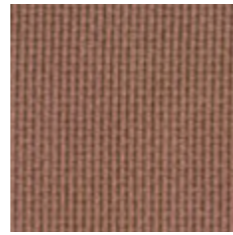
NX-2



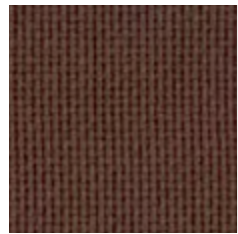
NX-3



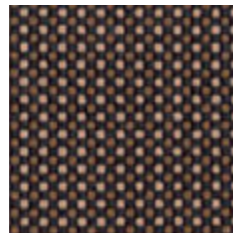
NX-5



NX-6



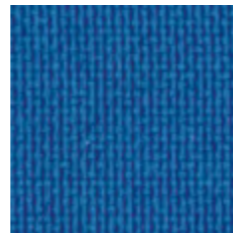
NX-8



NX-4



NX-9



NX-13

Cura Softline Sprint ValenciaTM Velvet Xtreme

PL

Skład:
100% poliester

Gramatura:
340 g/m²

Odporność na ścieranie: 100000 cykli Martindale'a (PN-EN ISO 12947-2),
Odporność na piling: 5 (PN-EN ISO 12945-2), **Trudnozapałność – papieros:** PN-EN 1021-1, **Trudnozapałność – zapalka:** PN-EN 1021-2, **Odporność na światło:** 5 (PN-EN ISO 105-B02)

Pielęgnacja:

- czyszczenie chemiczne: dopuszcza się użycie nadchlorku etylenu oraz wodnego roztworu węglafluoru,
- czyszczenie mechaniczne: czyścić na całej powierzchni szmatką zwilżoną wodą,
- nie moczyc miejscowo,
- chronić od bezpośredniego działania słońca,
- odkurzać regularnie w delikatny sposób,
- nie należy szorować ani używać twardej szczotki,
- nie używać detergentów do mycia naczyń ani prania,
- suszyć w cieniu, z daleka od źródeł ciepła

EN

Composition:
100% polyester

Weight:
340 g/m²

Abrasion resistance: 100000 Martindale cycles (PN-EN ISO 12947-2), **Pilling resistance:** 5 (PN-EN ISO 12945-2), **Flammability – cigarette:** PN-EN 1021-1, **Flammability – match:** PN-EN 1021-2, **Light fastness:** 5 (PN-EN ISO 105-B02)

Maintenance:

- dry cleaning: with tetrachloroethylene and water solution of carbonate fluoride,
- mechanical cleaning: clean on the whole surface with a damp cloth
- do not soak locally
- protect from direct sun
- vacuum regularly using low suction
- don't scrub or use stiff brush
- don't use dishwashing or laundry detergents
- dry in the shade, away from direct heat

DE

Zusammensetzung:
100% Polyester

Gewicht:
340 g/m²

Scheuerfestigkeit: 100000 Martindale Scheuertouren (PN-EN ISO 12947-2), **Peelingfestigkeit:** 5 (PN-EN ISO 12945-2), **Brandschutz – Zigarettentest:** PN-EN 1021-1, **Brandschutz – Streichholztest:** PN-EN 1021-2, **Lichtecheit:** 5 (PN-EN ISO 105-B02)

Reinigung:

- chemische Reinigung: Flecken mit Enzymmittel behandeln
- mechanische Reinigung: nicht nur Flecken sondern die ganze Stofffläche mit einem Tuch anfeuchten und abwischen,
- vor Sonneneinstrahlung schützen
- regelmässig absaugen
- keine Lösungsmittel und Detergentien anwenden
- im Schatten abtrocknen

Przedstawione wzory wykończeń nie stanowią oferty w rozumieniu Kodeksu Cywilnego. W ramach stałego doskonalenia produktów firma zastrzega sobie prawo do wprowadzania zmian w ofercie.

The offer presented in the pattern book is not a valid legal offer. In policy of continuous product improvement our company reserves right to make changes at any time without prior notice.

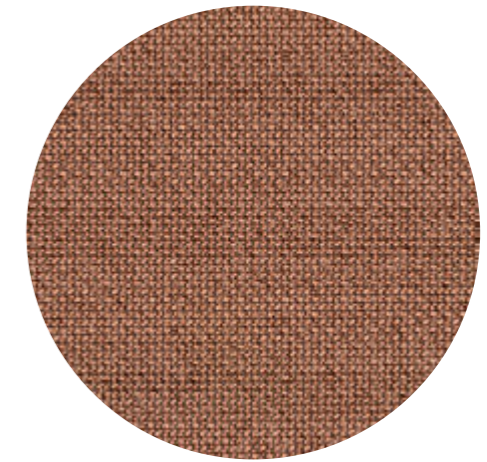
Dieser Katalog ist kein Angebot im rechtlichen Sinn. Wir behalten uns Änderungen der Produkten im Sinne einer technischen Entwicklung oder Änderungen in Form und Farbe vor.



profim

profim

2



CURA

by Gabriel

Standard Collection

profim

Cura

grupa
cenywa 2

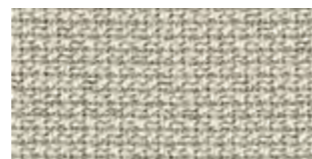
60110	66167
60999	66170
61168	68182
62083	68186

Extended Collection

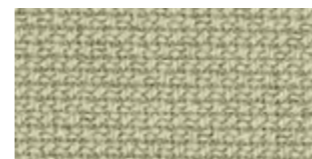
Wszystkie kolory poza standardowymi dostępne są z terminem realizacji 6-8 tygodni. Szczegóły wyceny dostępne są u właściwego RDS (Regionalnego Dyrektora Sprzedaży).



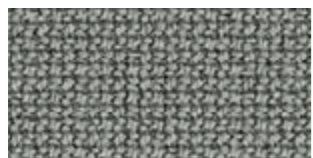
60000



61232



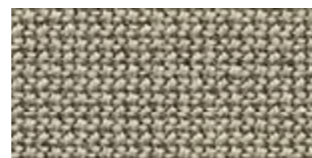
62125



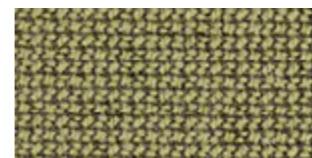
60327



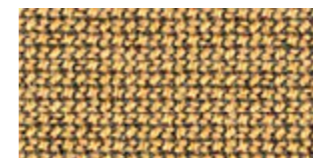
60112



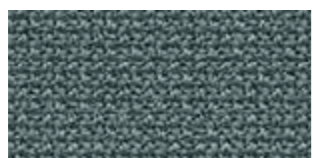
61168



62126



61233



66166



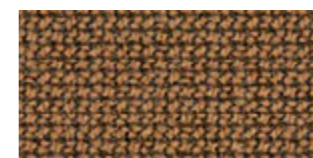
60110



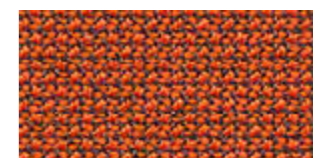
61259



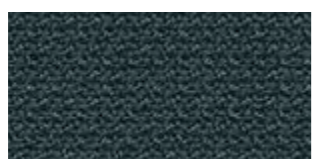
62084



61260



63078



66165



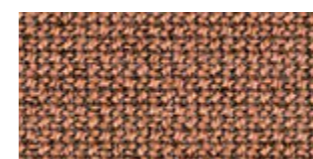
60109



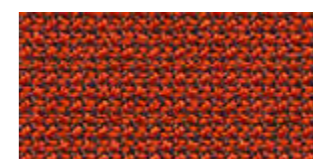
61169



62083



61257



63012



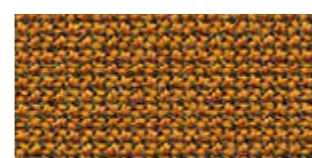
60111



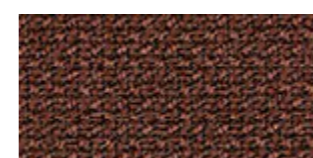
60999



60019



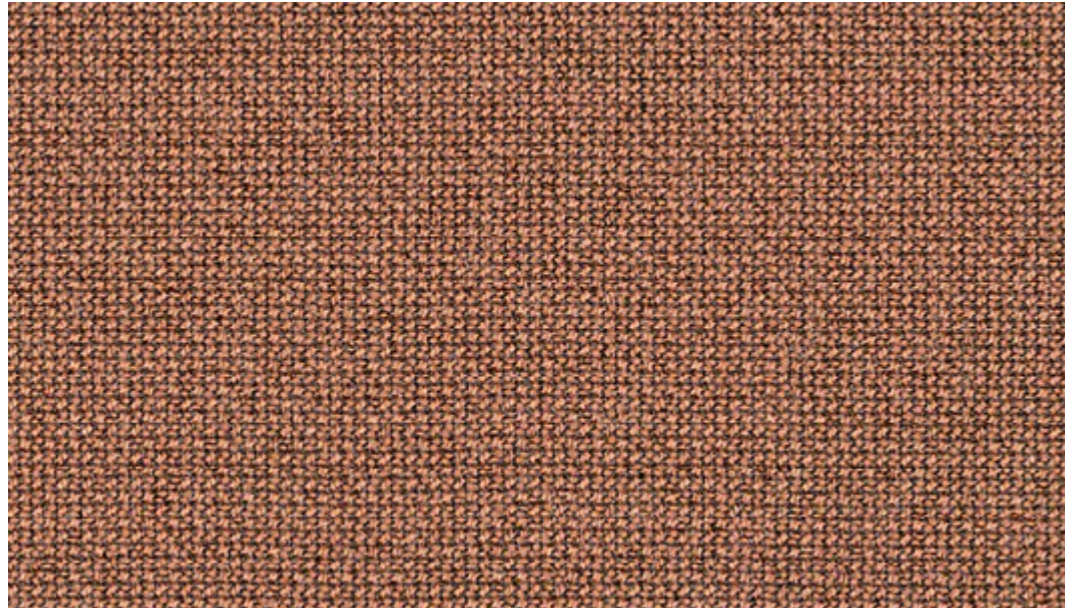
62082



61258



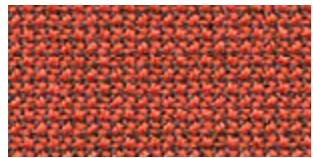
64196



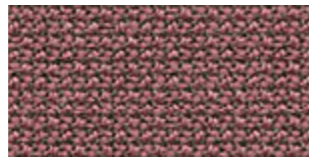
61257



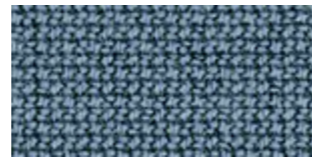
64240



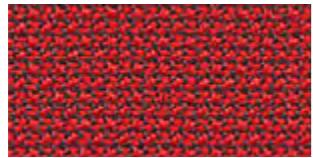
64197



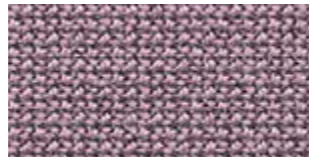
64195



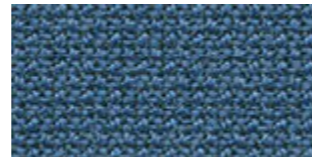
66239



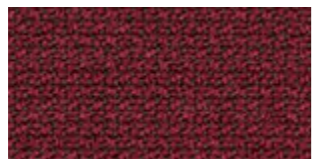
64013



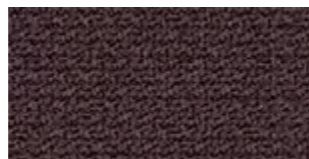
64194



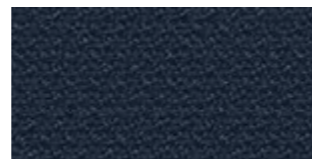
65105



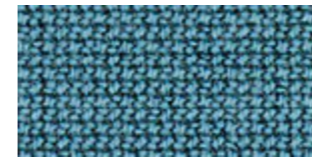
64252



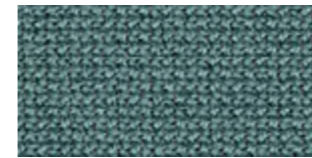
65137



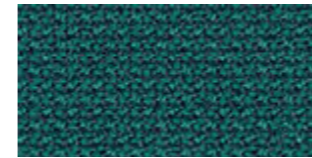
66169



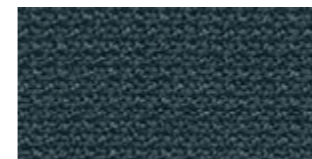
66240



66167



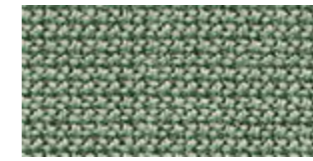
67084



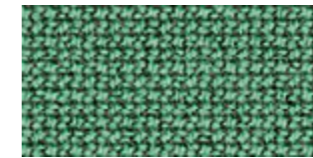
66170



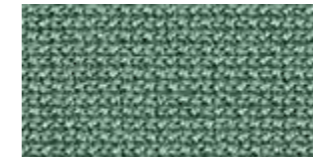
68262



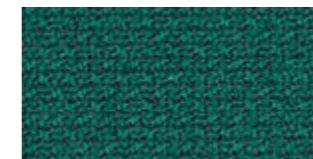
68186



68263



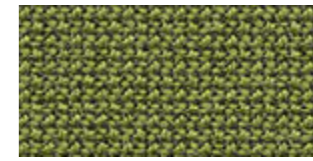
68187



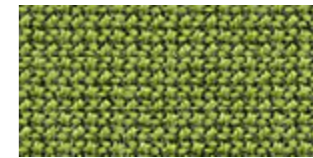
68264



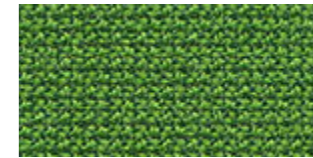
68261



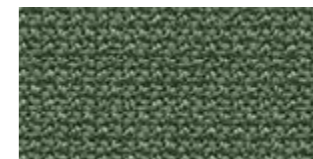
68181



68180



68183



68182

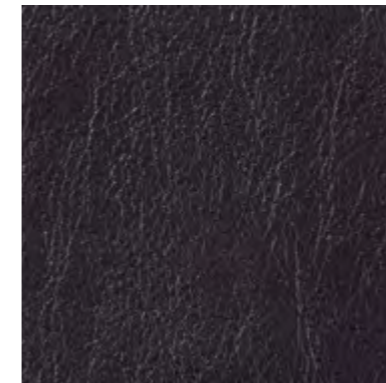
Standard Collection

② Softline

CURA

Cura specifications: www.gabriel.dk

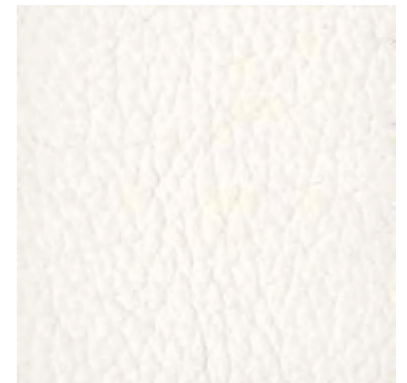
Please be aware that the PDF colour shades can appear different from the real fabric colours.
We advise you to request actual fabric samples before ordering.



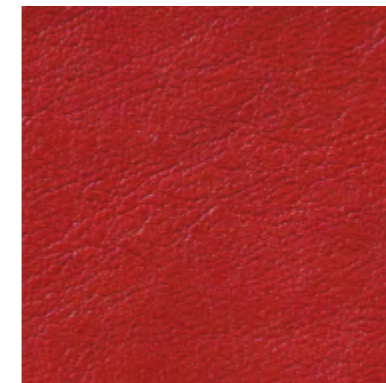
SL-18



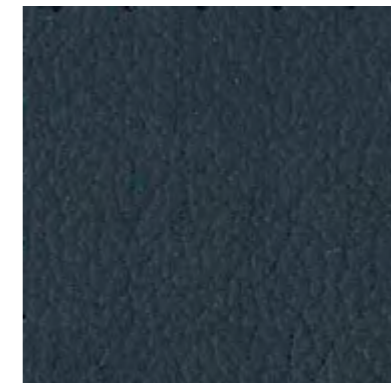
SL-16



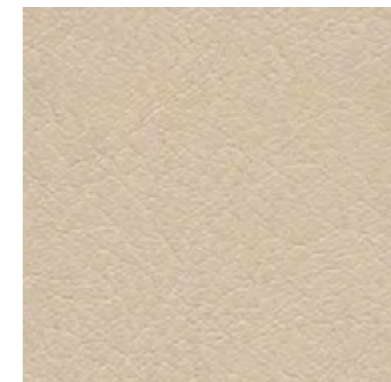
SL-28



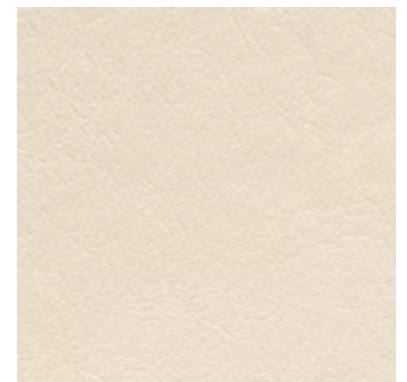
SL-19



SL-27



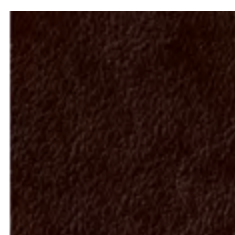
SL-21



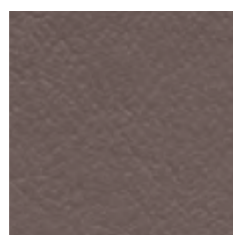
SL-10

Softline²

Extended Collection



SL-20



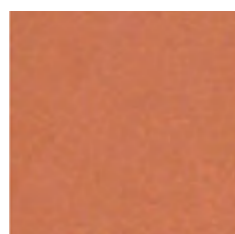
SL-22



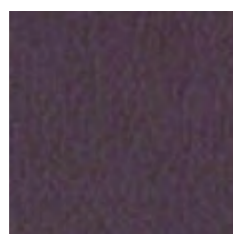
SL-23



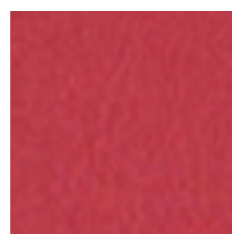
SL-26



SL-24



SL-29



SL-25

PL

Skład:

Powłoka: 100% PU
Nośnik: 100% bawełna/PES

Gramatura:

220 g/m²

Odporność na ścieranie: 50000 cykli Martindale'a (PN-EN ISO 5470-2),
Trudnozapałność – papieros: PN-EN 1021-1

Pielęgnacja:

- czyścić regularnie roztworem mydła w ciepłej wodzie z użyciem miękkiej szmatki lub gąbki
- miejsca bardziej zabrudzone pocierać miękką szczotką, po wyczyszczeniu spłukać powierzchnię wodą i wytrzeć miękką szmatką
- nie stosować past, wosków, sprayów, silnych detergentów, rozpuszczalników i środków czyszczących zawierających rozpuszczalniki

EN

Composition:

Surface: 100% PU
Basic material: 100% cotton/PES

Weight:

220 g/m²

Abrasion resistance: 50000 Martindale cycles (PN-EN ISO 5470-2), **Flammability – cigarette:** PN-EN 1021-1

Maintenance:

- clean with a damp soapy cloth and rinse well with clean water
- a soft brush can be used for heavy soiling
- do not use solvents, bleaches, abrasives, synthetic detergents, wax polishes or aerosol sprays

DE

Zusammensetzung:

Oberfläche: 100% PU
Gewebe: 100% Baumwolle/PES

Gewicht:

220 g/m²

Scheuerfestigkeit: 50000 Martindale Scheuertouren (PN-EN ISO 5470-2), **Brandschutz – Zigarettentest:** PN-EN 1021-1

Reinigung:

- regelmässig mit einem weichen Baumwollappen unter Zusatz der Seifenlösung und lauwarmes Wasser reinigen
- falls schwerer Flecken mit einer weichen Bürste oder einem Schwamm leicht reiben, mit Wasser abwischen und einem trockenen Lappen abtupfen
- keine Pasten, Wachs, Sprays, Lösungsmittel, Detergentien anwenden



Sprint

camira

Standard Collection

profim

Sprint

grupa cenowa ²

PS004	PS033
PS010	PS039
PS028	PS040
PS030	PS041

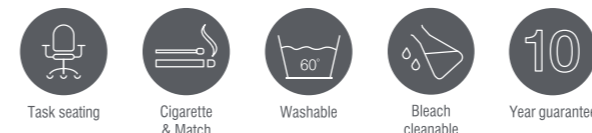
Extended Collection

Wszystkie kolory poza standardowymi dostępne są z terminem realizacji 6-8 tygodni. Szczegóły wyceny dostępne są u właściwego RDS (Regionalnego Dyrektora Sprzedaży).

Photographic fabric scans are not colour accurate. Always request actual fabric samples before ordering.



Sprint - Product information



Sprint is a classic stretch knit product with a smooth macro cellular construction and a classic design that will stand the test of time. Sprint has multi-directional stretch for excellent upholsterability on task chair bases and backs.

The flexibility and performance of this fabric was inspired by dynamic sportswear reflecting our pride in hosting the London 2012 Olympics and the endurance of the winning Team GB!



Technical information

UK	D	F	ES
Composition 100% Polyester	Zusammensetzung 100% Polyester	Composition 100% Polyester	Composició 100% Poliéster
Environment Certified to Indoor Advantage™ Gold Non metallic dyestuffs	Umweltfreundlich Nach Zertifikat Indoor Advantage™ Gold Nicht schwermetallhaltige Farbstoffe	Écologique Certifié à Indoor Advantage™ Gold Teintures non métalliques	Ambiental Certificado de Indoor Advantage™ Gold Tintes no metálicos
Width 150 cm minimum	Breite 150 cm nutzbare Breite	Largeur 150 cm minimum	Ancho 150 cm mínimo
Weight 325 g/m² ±5% (488 g/lin.m ±5%)	Gewicht 325 g/m² ±5% (488 g/ld.m ±5%)	Poids 325 g/m² ±5% (488 g/m.l ±5%)	Peso 325 g/m² ±5% (488 g/lin.m ±5%)
Abrasion Resistance* Heavy duty / 10 year guarantee Independently certified to ≥100,000 Martindale cycles	Scheuerfestigkeit* Schwerer Objekteinsatz / 10 Jahre Garantie Extern zertifiziert mit ≥100,000 Scheuertouren Martindale	Résistance à l'abrasion* Usage intense / garantie 10 ans Certificat indépendant ≥100,000 cycles Martindale	Resistencia a la abrasión* Garantía de 10 años con uso intenso independientemente del certificado de ≥100,000 Ciclos Martindale
Flammability EN 1021 - 1 (cigarette) EN 1021 - 2 (match) BS 7176 Low Hazard UNI 9175 Classe 1 IM BS 476 Part 7 Class 1 (Adhered) EN 13501-1 Un-adhered Class B, s1, d0 <i>Note: Flammability performance is dependent on components used. Our certificates show what substrates have been used in our tests. For composite tests customers must ensure their complete furniture meets the necessary standards.</i>	Feuersicherung EN 1021 - 1 (Zigarettestest) EN 1021 - 2 (Streichholztest) BS 7176 Low Hazard UNI 9175 Classe 1 IM BS 476 Part 7 Class 1 (Adhered) EN 13501-1 Un-adhered Class B, s1, d0 <i>Bemerkung: Die Schwerentflammbarkeit hängt von den verwendeten Komponenten ab. Unsere Zertifikate zeigen auf, welche Substrate bei den Tests verwendet wurden. Bei Verbundtests muss sichergestellt sein, daß das komplette Möbel den entsprechenden Standards entspricht.</i>	Flammabilité EN 1021 - 1 (cigarette) EN 1021 - 2 (allumette) BS 7176 Low Hazard UNI 9175 Classe 1 IM BS 476 Part 7 Class 1 (Adhered) EN 13501-1 Un-adhered Class B, s1, d0 <i>Notez: La performance de flammabilité dépend des composants utilisés. Nos certificats indiquent les substrats utilisés dans nos tests. Pour les tests composites, les clients doivent s'assurer que leurs meubles complets satisfont aux normes nécessaires.</i>	Inflamabilidad EN 1021 - 1 (cigarillo) EN 1021 - 2 (cerilla) BS 7176 Low Hazard UNI 9175 Classe 1 IM BS 476 Part 7 Class 1 (Adhered) EN 13501-1 Un-adhered Class B, s1, d0 <i>Nota: El rendimiento de la inflamabilidad depende de los componentes usados. Nuestros certificados muestran qué substratos se han usado en nuestros tests. Para tests compuestos nuestros clientes deben asegurar si sus muebles cumplen la normativa al uso.</i>
Light Fastness 5 (ISO 105 - B02)	Lichtechtheit 5 (ISO 105 - B02)	Solidité à la lumière 5 (ISO 105 - B02)	Solidez a la luz 5 (ISO 105 - B02)
Fastness to Rubbing Wet: 4, Dry: 4 (ISO 105 - X12)	Reibechtheit Nass: 4, Trocken: 4 (ISO 105 - X12)	Solidité au Frottement Mouillé: 4, Sec: 4 (ISO 105 - X12)	Solidez al rozamiento Húmedo: 4, Seco: 4 (ISO 105 - X12)
Bleach Cleanable ISO 105 E03 colour change 4 for dilution factor 1:4 chlorine solution	Chlorbleiche-Beständig ISO 105 E03 Farbänderung 4 bei einer 1:4 verdünnten Chlor-Lösung	Nettoyable au javel ISO 105 E03 changement de couleur 4 pour le facteur de dilution 1:4 solution de chlore	Posibilidad lavado con Lejía ISO 105 E03 cambio color 4 para un factor de disolución 1:4 solución cloro
Cleaning Vacuum regularly. Wipe with a damp cloth using a proprietary upholstery shampoo/ soap. For deeper cleaning use steam, bleach, alcohol or professionally dry clean. Can be washed at 60°C. Full details can be found in our cleaning and disinfection guide.	Reinigung Regelmässig absaugen. Mit einem feuchten Tuch abwischen oder mit einem geeigneten Polstershampoo behandeln. Für eine Grundreinigung bitte Dampf, Chlorbleiche, Alkohol oder professionelle Trockenreinigung verwenden. Kann bei 60°C gewaschen werden. Weitere Informationen finden Sie in unserem Leitfaden zur Reinigung und Desinfektion.	Nettoyage Passez l'aspirateur régulièrement. Essuyez avec un chiffon humide en utilisant un shampooing/savon pour tissu d'ameublement exclusif. Pour un nettoyage en profondeur, utilisez la vapeur, javel, alcool ou un nettoyage à sec professionnel. Peut être lavé à la machine, programme maximum 60°C. Vous trouverez tous les détails dans notre guide de nettoyage et de désinfection.	Limpieza Uso aspirador regularmente. Limpiar con un trapo usando jabón y agua o producto limpieza para tapicerías. Para una limpieza más profunda usen vapor, lejía, alcohol o limpieza en seco. Se puede lavar a 60°C. Los detalles completos se encuentran en nuestra guía de limpieza y desinfección.
<small>*Abrasion testing produces a wide variability of results even from the same test sample. The independent certificate of ≥100,000 cycles is available on our website or from our customer service team. Internally we also specify this product at >100,000 cycles which we believe is realistic for repeatability of testing. Please be aware that abrasion testing alone is not a reliable indicator of the actual wear performance of fabrics. We're so confident in the durability of our products that we provide a robust 10 year guarantee (full details available).</small>	<small>*Die Scheuerfestigkeitsprüfung ergibt selbst bei gleichen Testmustern stark abweichende Ergebnisse. Das Zertifikat eines unabhängigen Prüfinstitutes über ≥100,000 Scheuertouren erhalten Sie von unserem Vertriebsinnendienst oder auf unserer Webseite. Intern spezifizieren wir auch dieses Produkt mit >100,000 Scheuertouren, die in der Serienfertigung als realistisch angenommen werden. Bitte nehmen Sie zur Kenntnis, dass die Scheuerfestigkeitsprüfung allein keine Aussagekraft über die Langlebigkeit eines Bezugsstoffes hat. Wir sind von der Langlebigkeit unserer Produkte überzeugt und bieten daher 10 Jahre Garantie (Details auf Anfrage).</small>	<small>*Les tests de résistance à l'abrasion proposent une large variété de résultat final, parfois sur le même échantillon de tissu. Le certificat indépendant de ≥100,000 cycles est disponible sur notre site internet; vous pouvez également contacter notre Service Clients. Nous validons également – en interne – à >100,000 cycles; ce qui est, d'après nous, plus réaliste dans le but d'obtenir une continuité égale des résultats de tests. Merci de noter que l'abrasion seule ne constitue pas un indicateur de confiance dans la performance du tissu à long terme. Nous avons une confiance absolue en nos produits et leur durabilité, c'est pour cela que nous vous offrons une garantie robuste de 10 ans.</small>	<small>*Los Test de Abrasión producen unos resultados muy variables incluso con la misma muestra. El certificado de ≥100,000 ciclos Martindale está disponible en nuestra web o se puede pedir al Departamento Comercial. Internamente también certificamos este producto >100,000 ciclos, que pensamos que es lo más realista posible en este caso, con una repetición de resultados tan dispares. Tengan en cuenta que el Test de Abrasión solo no es un indicador fiable sobre el desgaste de un tejido. De hecho, estamos tan convencidos en la durabilidad de nuestros tejidos, que ofrecemos una garantía de 10 años (detalles completos disponibles).</small>
<small>Please note that seam performance is dependent on the Nahtfahne, der verwendeten Nadel und dem Näh-Garn ab. Wir empfehlen daher Nähversuche durchzuführen.</small>	<small>Eine optimale Nahtausreissfestigkeit hängt von der Nahtfahne, der verwendeten Nadel und dem Näh-Garn ab. Wir empfehlen daher Nähversuche durchzuführen.</small>	<small>Veillez noter que la performance du joint dépend de sa construction ainsi que de l'aiguille et du type de fil utilisés.</small>	<small>Tenga en cuenta que el rendimiento de la costura depende de la construcción de la costura, además de la aguja y del tipo de rosca. Le recomendamos que se aconsejen para coser la costura.</small>
<small>Batch to batch variations in shade may occur within commercial tolerances. We reserve the right to alter technical specifications without notice. The Unregistered Design Rights and the Copyright in all designs are the exclusive property of Camira Fabrics Limited.</small>	<small>Handelsübliche Farbabweichungen können auftreten und berechtigen nicht zur Reklamation. Wir behalten uns die Änderung technischer Spezifikationen vor. Die registrierten und nicht registrierten Urheberrechte der Dessinierungen sind ausschliessliches Eigentum der Camira Fabrics Limited.</small>	<small>Une variation de couleurs peut provenir (commerciallement tolérable). Nous réservons le droit de changer les spécifications techniques sans préavis. Les Droits de Conception non-enregistrés et les droits d'auteur de tous les motifs sont la propriété exclusive de Camira Fabrics Limited.</small>	<small>Las variaciones de lote a lote en la sombra se puede producir dentro de tolerancias comerciales. Nos reservamos el derecho a efectuar modificaciones técnicas sin previo aviso. Los derechos sobre los diseños no registrados y los derechos de autor en todos los diseños son propiedad exclusiva de Camira Fabrics Limited.</small>



Valencia™

CONTRACT | MARINE INTERIORS | AUTOMOTIVE

SPRADLING®
COATED FABRICS

Standard Collection

profim

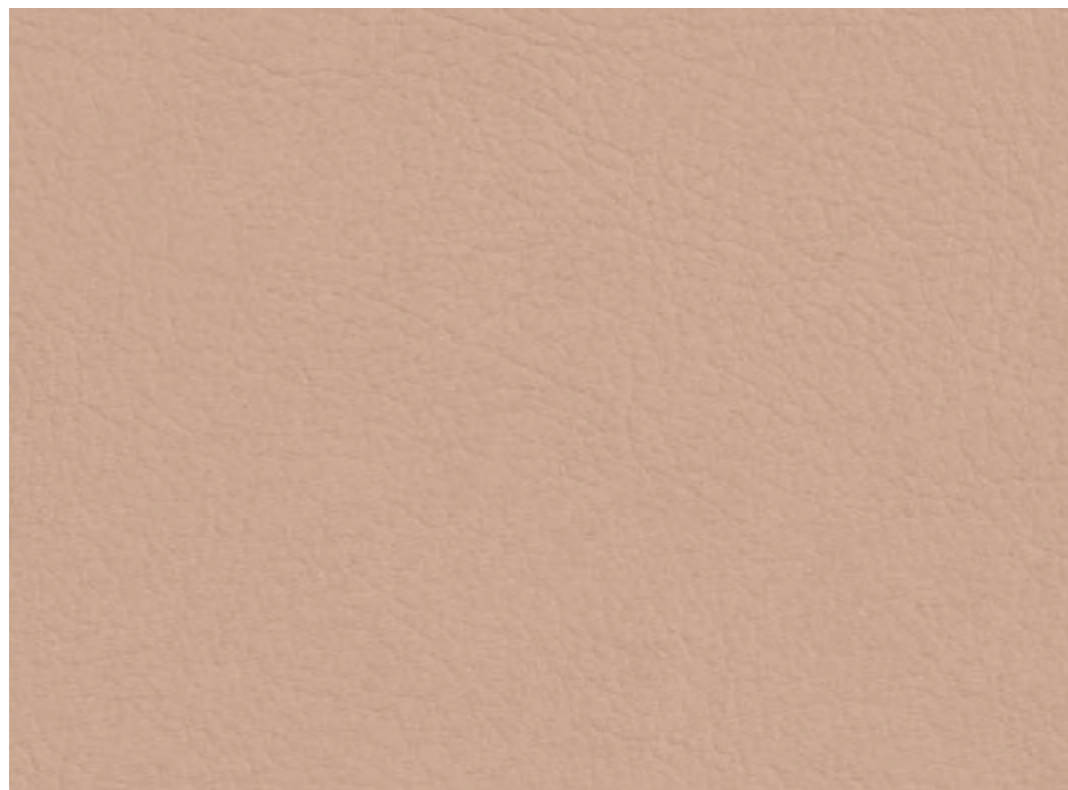
Valencia

grupa cenowa ②

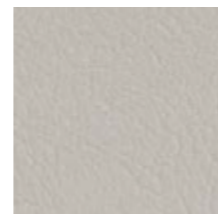
107-0002	107-4003
107-0034	107-4042
107-2107	107-4045
107-2116	107-9035

Extended Collection

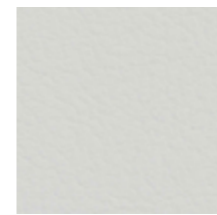
Wszystkie kolory poza standardowymi dostępne są z terminem realizacji 6-8 tygodni. Szczegóły wyceny dostępne są u właściwego RDS (Regionalnego Dyrektora Sprzedaży).



107-2113
LOTUS



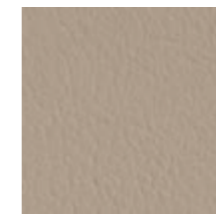
107-8020
PEARLESSENCE (MET.)



107-9607
PURE WHITE



107-8032
WEISS



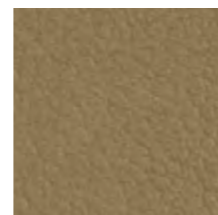
107-1048
SISAL



107-1020
IVORY (MET.)



107-1049
LEINEN



107-6020
GOLD (MET.)



107-1001
CHAMPAGNE



107-1050
BEIGE



107-2117
CASHMERE



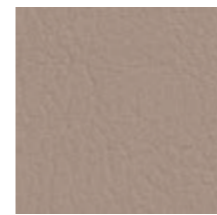
107-0002
COGNAC



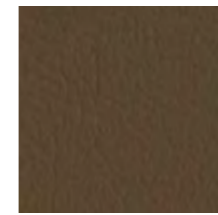
107-0035
TERRACOTTA



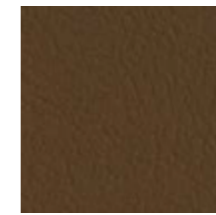
107-0034
TAUPE



107-4044
WARM GREY



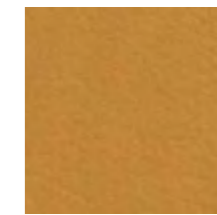
107-4001
MUSHROOM



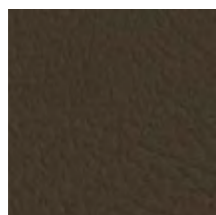
107-9001
SUMATRA



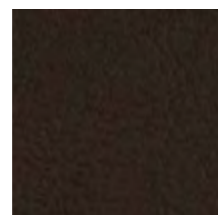
107-2115
CHESTNUT



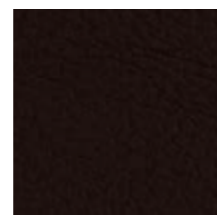
107-2116
CAMEL



107-5002
MOSS



107-4041
METEOR



107-0020
MOCCA



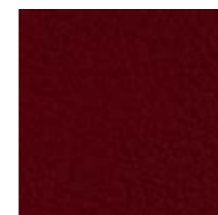
107-0001
PRALINÉ



107-0033
BUCHE



107-2001
MERLOT



107-2062
PORT



107-2074
KIRSCH



107-2075
ROT



107-2112
TOMATO

Also available in BS 5852 Part 2 CRIB 5 quality Also available in DIN 4102 B1 & NF P 92-503 M1 quality

No Master samples (not suitable for colour matching and quality control / testing purposes). Commercially acceptable colour shifts may occur between production runs. As such lot separation is recommended.

For Care and Cleaning instructions please visit our website WWW.SPARDLING.EU

[CLICK HERE TO SEE THE PRODUCT TECHNICAL SPECIFICATIONS](#)



CONTRACT



MARINE INTERIORS



AUTOMOTIVE

Colour Marked with has PERMABLOK³ PLUS+
ADVANCED VINYL PROTECTION



Also available in BS 5852 Part 2 CRIB 5 quality Also available in DIN 4102 BI & NF P 92-503 M1 quality

No Master samples (not suitable for colour matching and quality control / testing purposes). Commercially acceptable colour shifts may occur between production runs. As such lot separation is recommended.

For Care and Cleaning instructions please visit our website WWW.SPRADLING.EU

[CLICK HERE TO SEE THE PRODUCT TECHNICAL SPECIFICATIONS](#)



CONTRACT



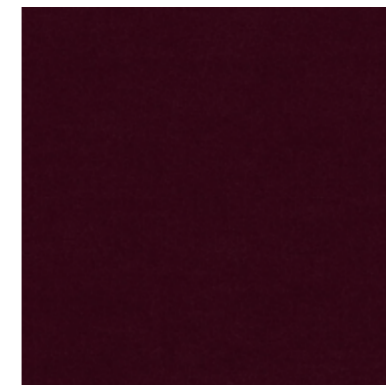
MARINE INTERIORS



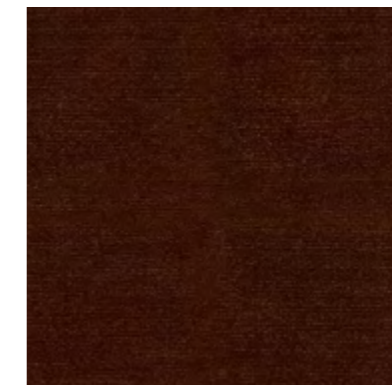
AUTOMOTIVE

SPRADLING®
Inspiration that covers the world

For more info: marketing.europe@spradling.group
WWW.SPRADLING.EU



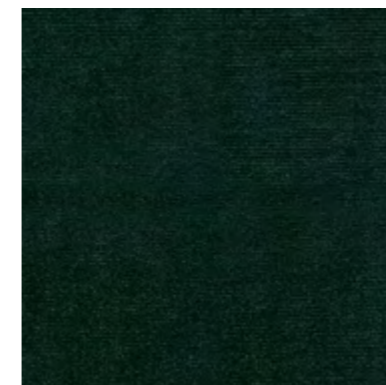
LAVENDER 71



WINERED 39



COPPER 126



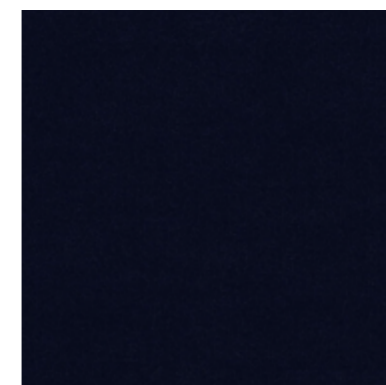
EMERALD 184



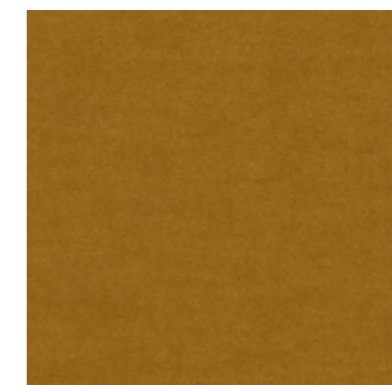
EUCALYPTUS 193



NIAGARA 158



NAVY 49



OCRE 23

Velvet²

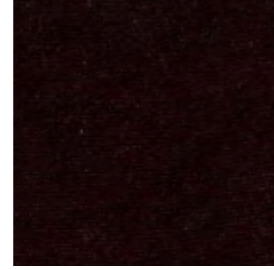
Extended Collection



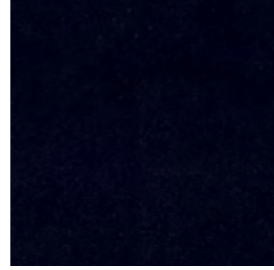
ONYX 169



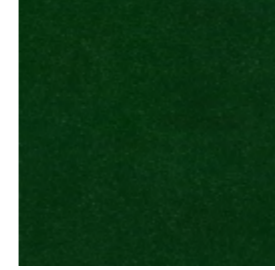
ESPRESSO 123



BLACKBERRY 177



DARKBLUE 48



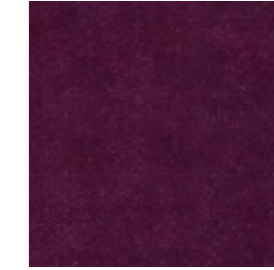
FOREST 162



TURTLE 88



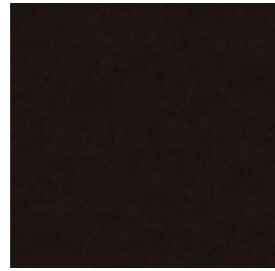
SCARLET 141



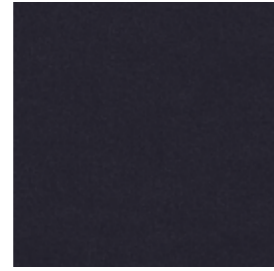
MAGNOLIA 160



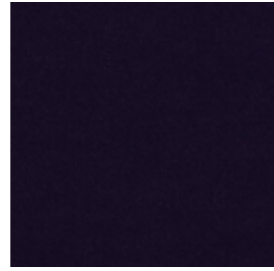
HUNTER 156



DARKBROWN 18



ANTHRACITE 67



NIGHTSHADE 178



MOSS 59



SHITAKE 124



CARMINE 36



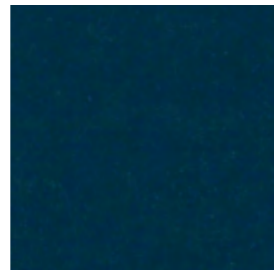
LIVER 10



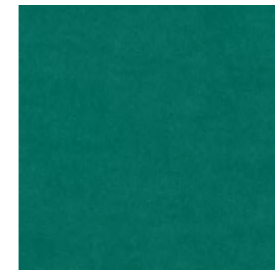
PLUMB 168



GREY 65



BLUE 45



TURQUOISE 44



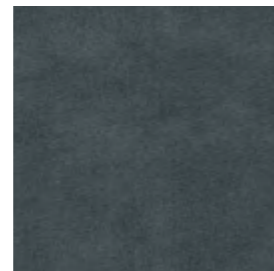
SAFFRON 183



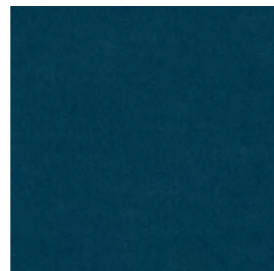
CINNAMON 94



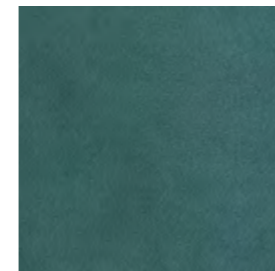
DOLPHIN 180



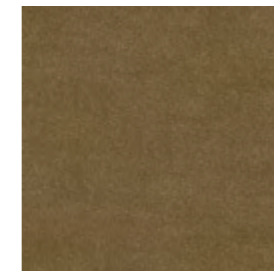
DENIM 153



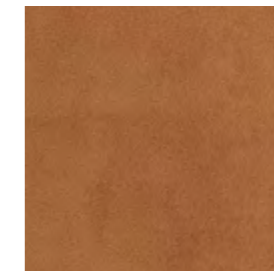
PETROL 56



TEAL 198



CAPPUCCINO 11



COGNAC 28



STEEL 149



IVORY 101



LILAC 70



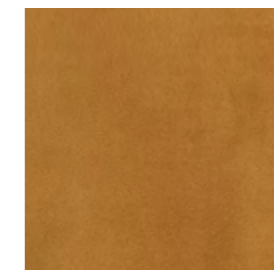
SKY 142



MINT 50



BEIGE 05



HONEY 202



BLOSSOM 166

Xtreme

camira

Standard Collection

profim

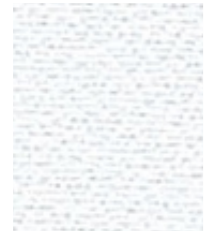
Xtreme

grupa
cenowa ②

YS009	YS081
YS026	YS094
YS047	YS096
YS079	YS136

Extended Collection

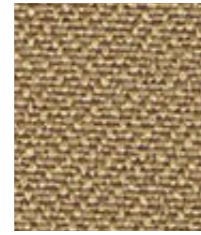
Wszystkie kolory poza standardowymi dostępne są z terminem realizacji 6-8 tygodni. Szczegóły wyceny dostępne są u właściwego RDS (Regionalnego Dyrektora Sprzedaży).



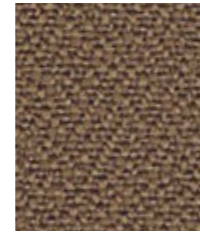
Adobo
YS165



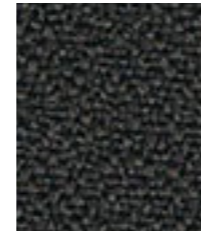
Aruba
YS108



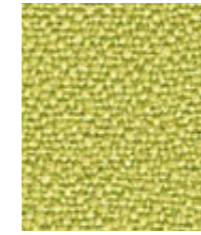
Sandstorm
YS071



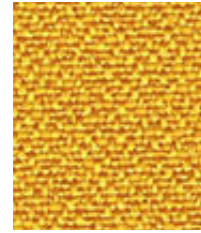
Nougat
YS091



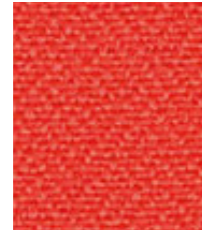
Sombrero
YS046



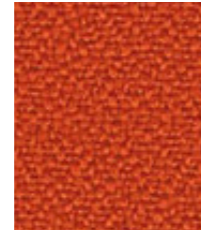
Apple
YS096



Solano
YS072



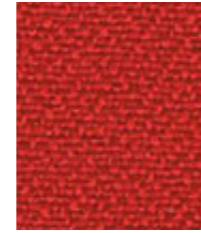
Tortuga
YS168



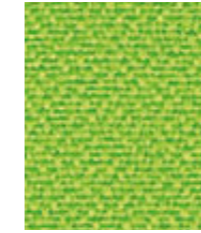
Lobster
YS076



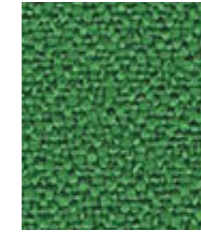
Belize
YS105



Panama
YS079



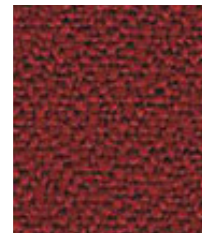
Madura
YS156



Lombok
YS159



Diablo
YS101



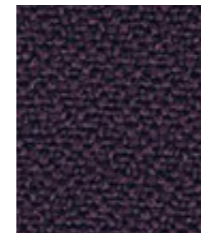
Tokara
YS136



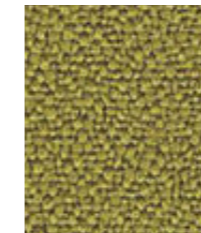
Tobago
YA030



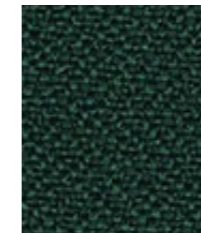
Bridgetown
YS102



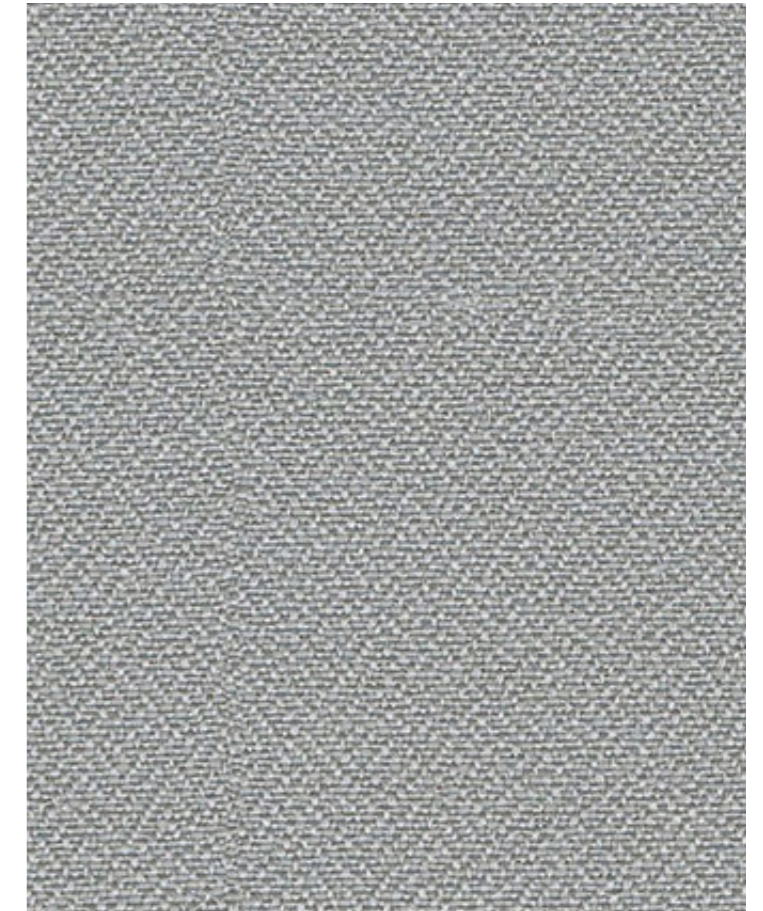
Tarot
YS084



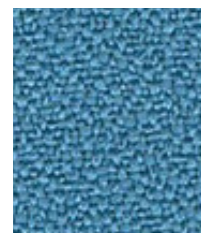
Appledore
YS077



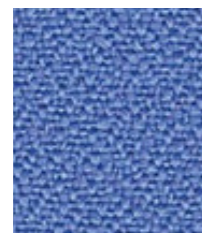
Taboo
YS045



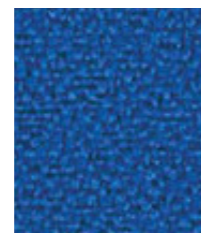
Slip
YS094



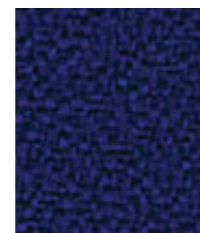
Parasol
YS073



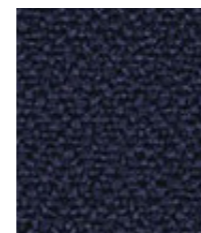
Bluebell
YS097



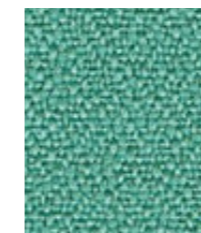
Honeymoon
YS035



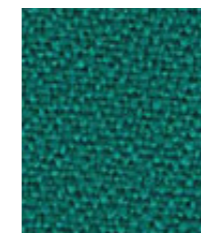
Ocean
YS100



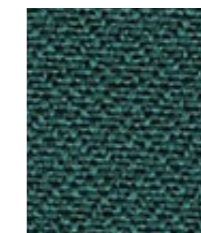
Cayman
YS024



Campeche
YS074



Tonga
YS160



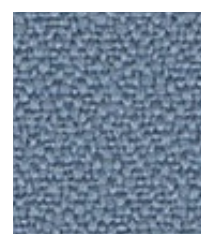
Windjammer
YS047



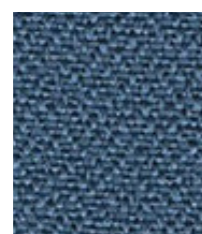
Krabi
YS141



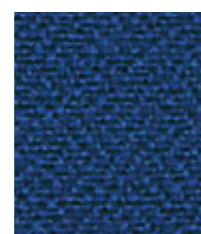
Blizzard
YS081



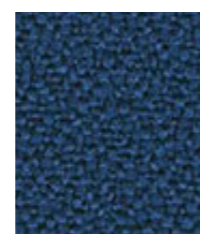
Steel
YS095



Martinique
YS004



Scuba
YS082



Curacao
YS005



Costa
YS026



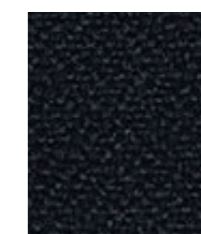
Rum
YS173



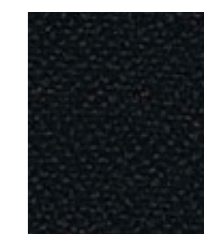
Osumi
YS171



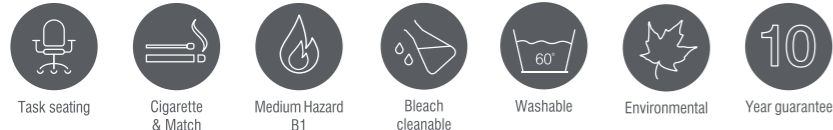
Bonaire
YS172



Padang
YS145



Havana
YS009



Xtreme is a modern crepe weave fabric made from 100% post-consumer recycled polyester, diverting waste from landfill and saving virgin raw materials. Its stretch properties, coupled with high flame retardancy, durability and non-pilling properties make Xtreme an ever popular fabric for task seating.



Technical information

UK

Industry Application
Contract

Composition
100% post-consumer recycled polyester

Environment
Certified to the EU Ecolabel
Certified to OEKO-TEX® Standard 100
Certified to Indoor Advantage™ Gold
Made from 100% recycled polyester
Non metallic dyestuffs

Width
140 cm minimum

Weight
310 g/m² ±5% (434 g/lin.m ±5%)

Abrasion Resistance*
Heavy duty / 10 year guarantee
Independently certified to ≥100,000 Martindale cycles

Flammability
EN 1021 - 1 (cigarette)
EN 1021 - 2 (match)
BS 7176 Low Hazard
BS 5852 Ignition Source 5
BS 7176 Medium Hazard
DIN 4102 B1
NF D 60-013
ONORM B 3825 & A 3800-1
(over 58 kg/m³ CMHR foam)
UNI 9175 Classe 1 IM
BS 476 Part 7 Class 1 (Adhered)
Note: Flammability performance is dependent on components used. Our certificates show what substrates have been used in our tests. For composite tests customers must ensure their complete furniture meets the necessary standards.

Light Fastness
6 (ISO 105 - B02)

Fastness to Rubbing
Wet: 4, Dry: 4 (ISO 105 - X12)

Bleach Cleanable
ISO 105 E03 colour change 4 for dilution factor 1:4 chlorine solution

Cleaning
Vacuum regularly. Wipe with a damp cloth using a proprietary upholstery shampoo/ soap. For deeper cleaning use steam, bleach, alcohol or professionally dry clean. Can be washed at 60°C. Full details can be found in our cleaning and disinfection guide.

*Abrasion testing produces a wide variability of results even from the same test sample. The independent certificate of ≥100,000 cycles is available on our website or from our customer service team. Internally we also specify this product at >100,000 cycles which we believe is realistic for repeatability of testing. Please be aware that abrasion testing alone is not a reliable indicator of the actual wear performance of fabrics. We're so confident in the durability of our products that we provide a robust 10 year guarantee (full details available). Please note that seam performance is dependent on seam construction and needle and thread type. We recommend that appropriate sewing advice be taken. Batch to batch variations in shade may occur within commercial tolerances. We reserve the right to alter technical specifications without notice. The Unregistered Design Rights and the Copyright in all designs are the exclusive property of Camira Fabrics Limited.

D

Einsatzbereich
Büro & Objekt

Zusammensetzung
100% post-consumer recycelten Polyester

Umweltfreundlich
Nach Zertifikat EU Ecolabel
Nach Zertifikat OEKO-TEX® Standard 100
Nach Zertifikat Indoor Advantage™ Gold
Hergestellt aus 100% recycelten Polyester
Nicht schwermetallhaltige Farbstoffe

Breite
140 cm nutzbare Breite

Gewicht
310 g/m² ±5% (434 g/lfd.m ±5%)

Scheuerfestigkeit*
Schwerer Objekteinsetz / 10 Jahre Garantie
Extern zertifiziert mit ≥100,000 Scheuertouren Martindale

Feuersicherung
EN 1021 - 1 (Zigarettestest)
EN 1021 - 2 (Streichholztest)
BS 7176 Low Hazard
BS 5852 Ignition Source 5
BS 7176 Medium Hazard
DIN 4102 B1
NF D 60-013
ONORM B 3825 & A 3800-1
(mit 58 kg/m³ CMHR Schaum)
UNI 9175 Classe 1 IM
BS 476 Part 7 Class 1 (Adhered)
Bemerkung: Die Schwerkentflammbarkeit hängt von den verwendeten Komponenten ab. Unsere Zertifikate zeigen auf, welche Substrate bei den Tests verwendet wurden. Bei Verbundtests muss sichergestellt sein, daß das komplette Möbel den entsprechenden Standards entspricht.

Lichtechtheit
6 (ISO 105 - B02)

Reibechtheit
Nass: 4, Trocken: 4 (ISO 105 - X12)

Chlorbleiche-Beständig
ISO 105 E03 Farbänderung 4 bei einer 1:4 verdünnten Chlor-Lösung

Reinigung
Regelmässig absaugen. Mit einem feuchten Tuch abwischen oder mit einem geeigneten Polstershampoo behandeln. Für eine Grundreinigung bitte Dampf, Chlorbleiche, Alkohol oder professionelle Trockenreinigung verwenden. Kann bei 60°C gewaschen werden. Weitere Informationen finden Sie in unserem Leitfaden zur Reinigung und Desinfektion.

*Die Scheuerfestigkeitsprüfung ergibt selbst bei gleichen Testmustern stark abweichende Ergebnisse. Das Zertifikat eines unabhängigen Prüfinstitutes über ≥100,000 Scheuertouren erhalten Sie von unserem Vertriebsinnendienst oder auf unserer Webseite. Intern spezifizieren wir auch dieses Produkt mit >100,000 Scheuertouren, die in der Serienfertigung als realistisch angenommen werden. Bitte nehmen Sie zur Kenntnis, dass die Scheuerfestigkeitsprüfung allein keine Aussagekraft über die Langlebigkeit eines Bezugsstoffes hat. Wir sind von der Langlebigkeit unserer Produkte überzeugt und bieten daher 10 Jahre Garantie (Details auf Anfrage). Eine optimale Nahtausreissfestigkeit hängt von der Nahtfahne, der verwendeten Nadel und dem Näh-Garn ab. Wir empfehlen daher Nähversuche durchzuführen. Handelsübliche Farbabweichungen können auftreten und berechtigen nicht zur Reklamation. Wir behalten uns die Änderung technischer Spezifikationen vor. Die registrierten und nicht registrierten Urheberrechte der Dessinierungen sind ausschliessliches Eigentum der Camira Fabrics Limited.

F

Application industrielle
Contract

Composition
100% polyester recyclé post-consommation

Écologique
Avec le certificat EU Ecolabel
Certifié à OEKO-TEX® Standard 100
Certifié à Indoor Advantage™ Gold
Fabriqué d'un polyester 100% recyclé
Teintures non métalliques

Largeur
140 cm minimum

Poids
310 g/m² ±5% (434 g/m.l ±5%)

Résistance à l'abrasion*
Usage intense / garantie 10 ans.
Certificat indépendant ≥100,000 cycles Martindale

Flammabilité
EN 1021 - 1 (cigarette)
EN 1021 - 2 (allumette)
BS 7176 Low Hazard
BS 5852 Ignition Source 5
BS 7176 Medium Hazard
DIN 4102 B1
NF D 60-013
ONORM B 3825 & A 3800-1
(sur 58 kg/m³ CMHR mousse)
UNI 9175 Classe 1 IM
BS 476 Part 7 Class 1 (Adhered)
Notez: La performance de flammabilité dépend des composantes utilisées. Nos certificats indiquent les substrats utilisés dans nos tests. Pour les tests composites, les clients doivent s'assurer que leurs meubles complets satisfont aux normes nécessaires.

Solidité à la lumière
6 (ISO 105 - B02)

Solidité au Frottement
Mouillé: 4, Sec: 4 (ISO 105 - X12)

Nettoyable au javel
ISO 105 E03 changement de couleur 4 pour le facteur de dilution 1: 4 solution de chlore

Nettoyage
Passez l'aspirateur régulièrement. Essuyez avec un chiffon humide en utilisant un shampoing/savon pour tissus d'ameublement exclusif. Pour un nettoyage en profondeur, utilisez la vapeur, javel, alcool ou un nettoyage à sec professionnel. Peut être lavé à la machine, programme maximum 60°C. Vous trouverez tous les détails dans notre guide de nettoyage et de désinfection.

*Les tests de résistance à l'abrasion proposent une large variété de résultat final, parfois sur le même échantillon de tissu. Le certificat indépendant de ≥100,000 cycles est disponible sur notre site internet; vous pouvez également contacter notre Service Clients. Nous validons également – en interne – à >100,000 cycles; ce qui est, d'après nous, plus réaliste dans le but d'obtenir une continuité égale des résultats de tests. Merci de noter que l'abrasion seule ne constitue pas un indicateur de confiance dans la performance du tissu à long terme. Nous avons une confiance absolue en nos produits et leur durabilité, c'est pour cela que nous vous offrons une garantie robuste de 10 ans. Veuillez noter que la performance du joint dépend de sa construction ainsi que de l'aiguille et du type de fil utilisés. Une variation de couleurs peut provenir (commerciallement tolérable). Nous réservons le droit de changer les spécifications techniques sans préavis. Les Droits de Conception non-enregistrés et les droits d'auteur de tous les motifs sont la propriétés exclusives de Camira Fabrics Limited.

ES

Aplicación Industrial
Contract

Composición
Polyester reciclado 100% post consumido

Ambiental
Certificado con EU Ecolabel
Certificado de OEKO-TEX® Standard 100
Certificado de Indoor Advantage™ Gold
Hecho de 100% de poliéster reciclado
Tintes no metálicos

Ancho
140 cm mínimo

Peso
310 g/m² ±5% (434 g/lin.m ±5%)

Resistencia a la abrasión*
Garantía de 10 años con uso intenso independientemente del certificado de ≥100,000 Ciclos Martindale

Inflamabilidad
EN 1021 - 1 (cigarillo)
EN 1021 - 2 (cerilla)
BS 7176 Low Hazard
BS 5852 Ignition Source 5
BS 7176 Medium Hazard
DIN 4102 B1
NF D 60-013
ONORM B 3825 & A 3800-1
(con CMHR 58 kg/m³ de espuma)
UNI 9175 Classe 1 IM
BS 476 Part 7 Class 1 (Adhered)
Nota: El rendimiento de la inflamabilidad depende de los componentes usados. Nuestros certificados muestran qué substratos se han usado en nuestros tests. Para tests compuestos nuestros clientes deben asegurar si sus muebles cumplen la normativa al uso.

Solidez a la luz
6 (ISO 105 - B02)

Solidez al rozamiento
Húmedo: 4, Seco: 4 (ISO 105 - X12)

Possibilidad lavado con Lejía
ISO 105 E03 cambio color 4 para un factor de disolución 1:4 solución cloro

Limpieza
Uso aspirador regularmente. Limpiar con un trapo usando jabón y agua o producto limpieza para tapicerías. Para una limpieza más profunda usen vapor, lejía, alcohol o limpieza en seco. Se puede lavar a 60°C. Los detalles completos se encuentran en nuestra guía de limpieza y desinfección.

*Los Test de Abrasión producen unos resultados muy variables incluso con la misma muestra. El certificado de ≥100,000 ciclos Martindale está disponible en nuestra web o se puede pedir al Departamento Comercial. Internamente también certificamos este producto >100,000 ciclos, que pensamos que es lo más realista posible en este caso, con una repetición de resultados tan dispares. Tengan en cuenta que el Test de Abrasión solo no es un indicador fiable sobre el desgaste de un tejido. De hecho, estamos tan convencidos en la durabilidad de nuestros tejidos, que ofrecemos una garantía de 10 años (detalles completos disponibles). Tenga en cuenta que el rendimiento de la costura depende de la construcción de la costura, además de la aguja y del tipo de rosca. Le recomendamos que se aconsejen para coser la costura. Las variaciones de lote a lote en la sombra se puede producir dentro de tolerancias comerciales. Nos reservamos el derecho a efectuar modificaciones técnicas sin previo aviso. Los derechos sobre los diseños no registrados y los derechos de autor en todos los diseños son propiedad exclusiva de Camira Fabrics Limited.

Oceanic Select Step Synergy

Oceanic

camira

Standard Collection

profim

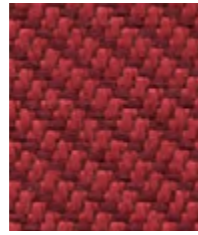
Oceanic

grupa
cenowa 3

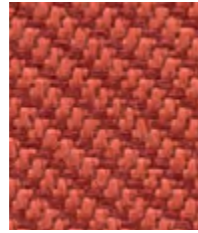
OOC01	OOC11
OOC04	OOC12
OOC06	OOC13
OOC08	OOC16

Extended Collection

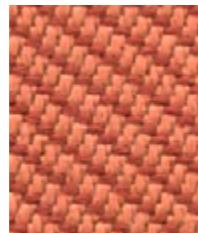
Wszystkie kolory poza standardowymi dostępne są z terminem realizacji 6-8 tygodni. Szczegóły wyceny dostępne są u właściwego RDS (Regionalnego Dyrektora Sprzedaży).



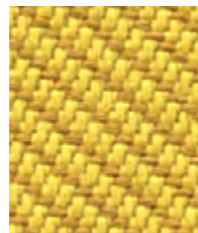
Abyss
OOC10



Aquatic
OOC12



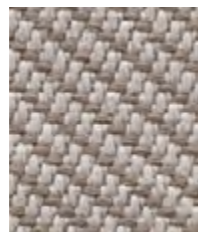
Coral
OOC05



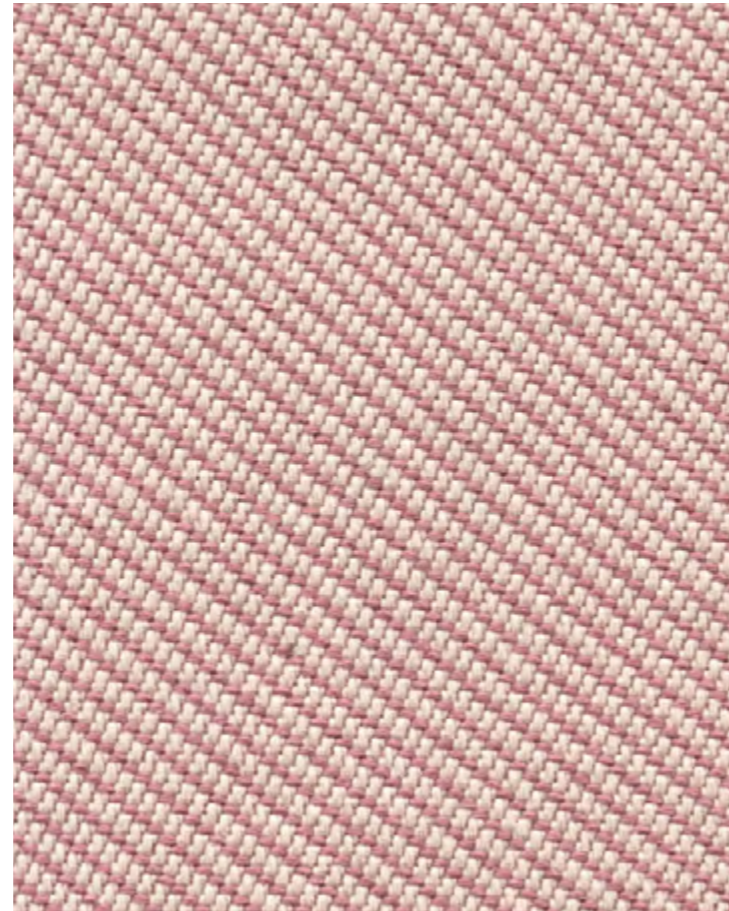
Barrier
OOC07



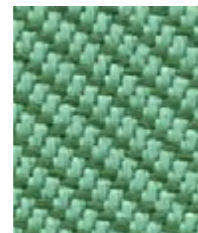
Paddle
OOC13



Riptide
OOC14



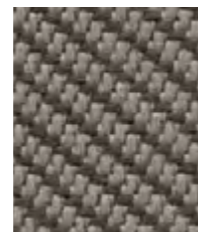
Seafarer
OOC16



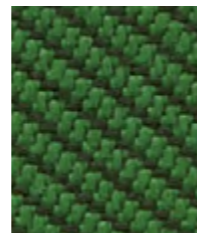
Sea
OOC04



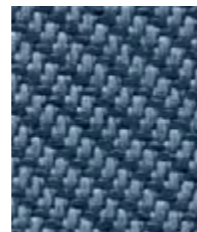
Gulf
OOC15



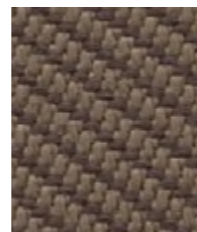
Bay
OOC08



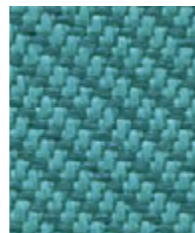
Coast
OOC03



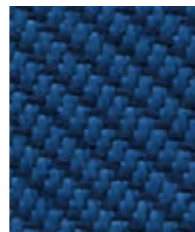
Neptune
OOC11



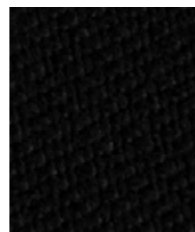
Shore
OOC09



Jetsam
OOC02

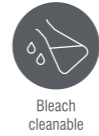
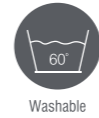


Atoll
OOC06



Flotsam
OOC01

Oceanic - Product information



With Treatment



Oceanic is a fabric born of the SEAQUAL INITIATIVE to combat marine plastic pollution and achieve a waste free environment. It is created entirely from post-consumer recycled plastic - from debris floating discarded in our seas, used to make SEAQUAL YARN®, to bottles thrown away and destined for landfill. One small drop in the mission to clean both the earth and its ocean, this contemporary fabric is a polyester with a purpose.

We actively encourage our furniture customers to sign up to the SEAQUAL INITIATIVE when selling furniture upholstered in Oceanic.

Find out more at <https://licensees.seaqual.org>



SEAQUAL

Technical information

UK

Industry Application
Contract

Composition
100% post-consumer recycled polyester, including 50% SEAQUAL yarn.

Environment
Certified to the EU Ecolabel
Certified to OEKO-TEX® Standard 100
Certified to Indoor Advantage™ Gold
Made from 100% post-consumer recycled polyester
Non metallic dyestuffs

Width
140 cm minimum

Weight
497g/m² ±5% (696g/lin.m ±5%)

Abrasion Resistance*
Heavy duty / 10 year guarantee
Independently certified to ≥100,000 Martindale cycles

Flammability
EN 1021 - 1 (cigarette)
EN 1021 - 2 (match)
BS 7176 Low Hazard

Optional: Please specify when ordering:
BS 5852 Ignition Source 5 with EnviroFlam5
BS 7176 Medium Hazard with EnviroFlam5
Note: Flammability performance is dependent on components used. Our certificates show what substrates have been used in our tests. For composite tests customers must ensure their complete furniture meets the necessary standards.

Light Fastness
5 (ISO 105 - B02)
OOC16: 4/5 (ISO 105 - B02)

Fastness to Rubbing
Wet: 4, Dry: 4 (ISO 105 - X12)

Bleach Cleanable
ISO 105 E03 colour change 4 for dilution factor 1:4 chlorine solution

Cleaning
Vacuum regularly. Wipe with a damp cloth using a proprietary upholstery shampoo/ soap. For deeper cleaning use steam, bleach, alcohol or professionally dry clean. Can be washed at 60°C. Full details can be found in our cleaning and disinfection guide.

*Abrasion testing produces a wide variability of results even from the same test sample. The independent certificate of ≥100,000 cycles is available on our website or from our customer service team. Internally we specify this product at >80,000 cycles which we believe is realistic for repeatability of testing. Please be aware that abrasion testing alone is not a reliable indicator of the actual wear performance of fabrics. We're so confident in the durability of our products that we provide a robust 10 year guarantee (full details available). Please note that seam performance is dependent on seam construction and needle and thread type. We recommend that appropriate sewing advice be taken.
Batch to batch variations in shade may occur within commercial tolerances. We reserve the right to alter technical specifications without notice. The Unregistered Design Rights and the Copyright in all of our designs are the exclusive property of Camira Fabrics Limited.

D

Einsatzbereich
Büro & Objekt

Zusammensetzung
100% recyceltes post-consumer Polyester, enthält 50% SEAQUAL Garn.

Umweltfreundlich
Nach Zertifikat EU Ecolabel
Nach Zertifikat OEKO-TEX® Standard 100
Nach Zertifikat Indoor Advantage™ Gold
Hergestellt aus 100% post-consumer recyceltes Polyester
Nicht schwermetallhaltige Farbstoffe

Breite
140 cm nutzbare Breite

Gewicht
497g/m² ±5% (696g/lf.d.m ±5%)

Scheuerfestigkeit*
Schwerer Objekteinsatz / 10 Jahre Garantie
Extern zertifiziert mit ≥100,000 Scheuertouren Martindale

Feuersicherung
EN 1021 - 1 (Zigarettenstest)
EN 1021 - 2 (Streichholzstest)
BS 7176 Low Hazard

Bitte bei Auftragserteilung angeben:
BS 5852 Ignition Source 5 mit EnviroFlam5
BS 7176 Medium Hazard mit EnviroFlam5
Bemerkung: Die Schwerentflammbarkeit hängt von den verwendeten Komponenten ab. Unsere Zertifikate zeigen auf, welche Substrate bei den Tests verwendet wurden. Bei Verbundtests muss sichergestellt sein, daß das komplette Möbel den entsprechenden Standards entspricht.

Lichtechtheit
5 (ISO 105 - B02)
OOC16: 4/5 (ISO 105 - B02)

Reibechtheit
Wass: 4, Trocken: 4 (ISO 105 - X12)

Chlorbleiche-Beständig
ISO 105 E03 Farbänderung 4 bei einer 1:4 verdünnten Chlor-Lösung

Reinigung
Regelmässig absaugen. Mit einem feuchten Tuch abwischen oder mit einem geeigneten Polstershampoo behandeln. Für eine Grundreinigung bitte Dampf, Chlorbleiche, Alkohol oder professionelle Trockenreinigung verwenden. Kann bei 60°C gewaschen werden. Weitere Informationen finden Sie in unserem Leitfaden zur Reinigung und Desinfektion.

*Die Scheuerfestigkeitsprüfung ergibt selbst bei gleichen Testmustern stark abweichende Ergebnisse. Das Zertifikat eines unabhängigen Prüfinstitutes über ≥100,000 Scheuertouren erhalten Sie von unserem Vertriebsinnendienst oder auf unserer Webseite. Intern spezifizieren wir dieses Produkt mit >80,000 Scheuertouren, die in der Serienfertigung als realistisch angesehen werden. Bitte nehmen Sie zur Kenntnis, dass die Scheuerfestigkeitsprüfung allein keine Aussagekraft über die Langlebigkeit eines Bezugstoffes hat. Wir sind von der Langlebigkeit unserer Produkte überzeugt und bieten daher 10 Jahre Garantie (Details auf Anfrage). Eine optimale Nahtausreissfestigkeit hängt von der Nahtführung, der verwendeten Nadel und dem Näh-Garn ab. Wir empfehlen daher Nähversuche durchzuführen. Handelsübliche Farbabweichungen können auftreten und berechtigen nicht zur Reklamation. Wir behalten uns die Änderung technischer Spezifikationen vor. Die registrierten und nicht registrierten Urheberrechte der Dessinierungen sind ausschliessliches Eigentum der Camira Fabrics Limited.

F

Application Industrielle
Contract

Composition
100% polyester recyclé post consommation, comprenant 50% de fil SEAQUAL.

Écologique
Avec le certificat EU Ecolabel
Certifié à OEKO-TEX® Standard 100
Certifié à Indoor Advantage™ Gold
Fabriqué en polyester recyclé à 100% après consommation
Teintures non métalliques

Largeur
140 cm minimum

Poids
497g/m² ±5% (696g/m.l ±5%)

Résistance à l'abrasion*
Usage intense / garantie 10 ans. Certificat indépendant ≥100,000 cycles Martindale

Flammabilité
EN 1021 - 1 (cigarette)
EN 1021 - 2 (allumette)
BS 7176 Low Hazard

Prière de le mentionner lors de la commande:
BS 5852 Ignition Source 5 avec EnviroFlam5
BS 7176 Medium Hazard avec EnviroFlam5
Note: La performance de flammabilité dépend des composantes utilisées. Nos certificats indiquent les substrats utilisés dans nos tests. Pour les tests composites, les clients doivent s'assurer que leurs meubles complets satisfont aux normes nécessaires.

Solidité à la lumière
5 (ISO 105 - B02)
OOC16: 4/5 (ISO 105 - B02)

Solidité au Frottement
Mouillé: 4, Sec: 4 (ISO 105 - X12)

Nettoyable au Javel
ISO 105 E03 changement de couleur 4 pour le facteur de dilution 1: 4 solution de chlore

Nettoyage
Passez l'aspirateur régulièrement. Essuyez avec un chiffon humide en utilisant un shampooing / savon pour tissus d'ameublement exclusif. Pour un nettoyage en profondeur, utilisez la vapeur, javel, alcool ou un nettoyage à sec professionnel. Peut être lavé à la machine, programme maximum 60°C. Vous trouverez tous les détails dans notre guide de nettoyage et de désinfection.

*Les tests de résistance à l'abrasion proposent une large variété de résultat final, parfois sur le même échantillon de tissu. Le certificat indépendant de ≥100,000 cycles est disponible sur notre site internet; vous pouvez également contacter notre Service Clients. Nous validons ce produit – en interne – à >80,000 cycles; ce qui est, d'après nous, plus réaliste dans le but d'obtenir une continuité égale des résultats de tests. Merci de noter que l'abrasion seule ne constitue pas un indicateur de confiance dans la performance du tissu à long terme. Nous avons une confiance absolue en nos produits et leur durabilité, c'est pour cela que nous vous offrons une garantie robuste de 10 ans. Veuillez noter que la performance du joint dépend de sa construction ainsi que de l'aiguille et du type de fil utilisés. Une variation de couleurs peut provenir (commerciallement tolérable). Nous réservons le droit de changer les spécifications techniques sans préavis. Les Droits de Conception non-enregistrés et les droits d'auteur de tous les motifs sont la propriété exclusive de Camira Fabrics Limited.

ES

Aplicación Industrial
Contract

Composición
100% polyester reciclado post consume, compuesto de un 50% de hilo SEAQUAL.

Ambiental
Certificado con EU Ecolabel
Certificado de OEKO-TEX® Standard 100
Certificado de Indoor Advantage™ Gold
Producido con poliéster reciclado 100% tras ser consumido
Tintes no metálicos

Ancho
140 cm mínimo

Peso
497g/m² ±5% (696g/lin.m ±5%)

Resistencia a la abrasión*
Garantía de 10 años con uso intenso independiente del certificado de ≥100,000 Ciclos Martindale

Inflamabilidad
EN 1021 - 1 (cigarillo)
EN 1021 - 2 (cerilla)
BS 7176 Low Hazard

Por favor especificar cuando se requiere en el pedido:
BS 5852 Ignition Source 5 con EnviroFlam5
BS 7176 Medium Hazard with EnviroFlam5
Nota: El rendimiento de la inflamabilidad depende de los componentes usados. Nuestros certificados muestran qué substratos se han usado en nuestros tests. Para tests compuestos nuestros clientes deben asegurar si sus muebles cumplen la normativa al uso.

Solidéz a la luz
5 (ISO 105 - B02)
OOC16: 4/5 (ISO 105 - B02)

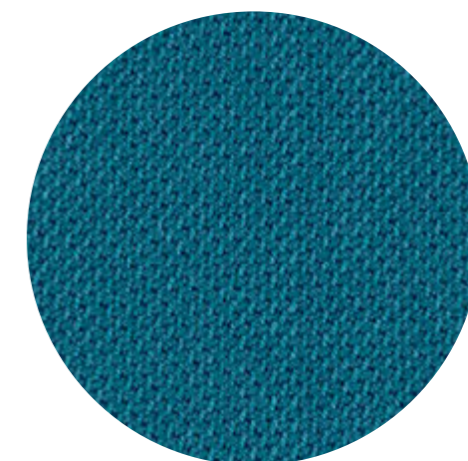
Solidéz al rozamiento
Húmedo: 4, Seco: 4 (ISO 105 - X12)

Posibilidad lavado con Lejía
ISO 105 E03 cambio color 4 para un factor de disolución 1:4 solución cloro

Limpeza
Uso aspirador regularmente. Limpiar con un trapo usando jabón y agua o producto limpieza para tapicerías. Para una limpieza más profunda usen vapor, lejía, alcohol o limpieza en seco. Se puede lavar a 60°C. Los detalles completos se encuentran en nuestra guía de limpieza y desinfección.

*Los Test de Abrasión producen unos resultados muy variables incluso con la misma muestra. El certificado de ≥100,000 ciclos Martindale está disponible en nuestra web o se puede pedir al Departamento Comercial. Internamente certificamos este producto >80,000 ciclos, que pensamos que es lo más realista posible en este caso, con una repetición de resultados tan dispares. Tengan en cuenta que el Test de Abrasión solo no es un indicador fiable sobre el desgaste de un tejido. De hecho, estamos tan convencidos en la durabilidad de nuestros tejidos, que ofrecemos una garantía de 10 años (detalles completos disponibles). Tenga en cuenta que el rendimiento de la costura depende de la construcción de la costura, además de la aguja y del tipo de roscas. Le recomendamos que se aconsejen para coser la costura. Las variaciones de lote a lote en la sombra se puede producir dentro de tolerancias comerciales. Nos reservamos el derecho a efectuar modificaciones técnicas sin previo aviso. Los derechos sobre los diseños no registrados y los derechos de autor en todos los diseños son propiedad exclusiva de Camira Fabrics Limited.

profim



SELECT™

by Gabriel

Standard
Collection

profim

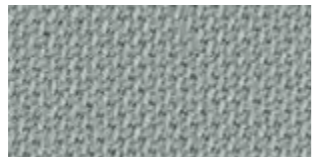
Select

grupa
cenowa 3

60132	65117
60999	67097
61186	67098
62097	68210

Extended
Collection

Wszystkie kolory poza standardowymi dostępne są z terminem realizacji 6-8 tygodni. Szczegóły wyceny dostępne są u właściwego RDS (Regionalnego Dyrektora Sprzedaży).



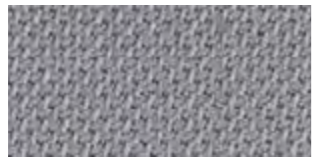
60131



60005



62097



60139



61188



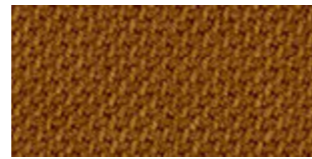
62098



60003



60129



62100



60134



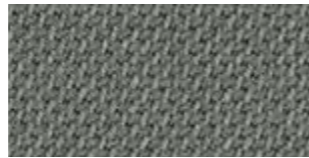
60130



61184



60051



60132



61189



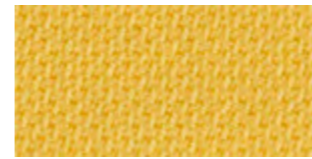
60999



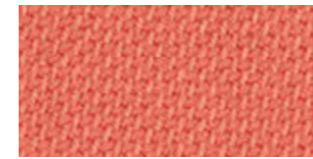
60133



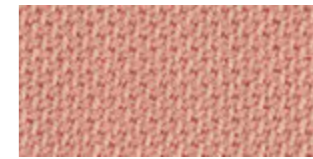
61187



62103



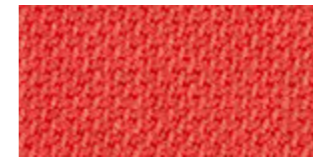
64214



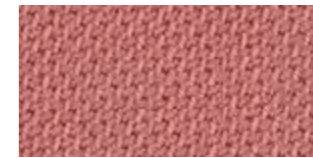
64213



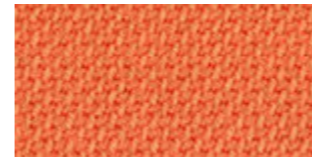
62099



64215



65117



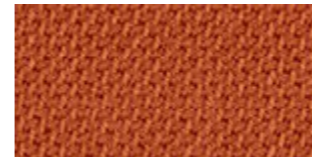
63101



64216



61185



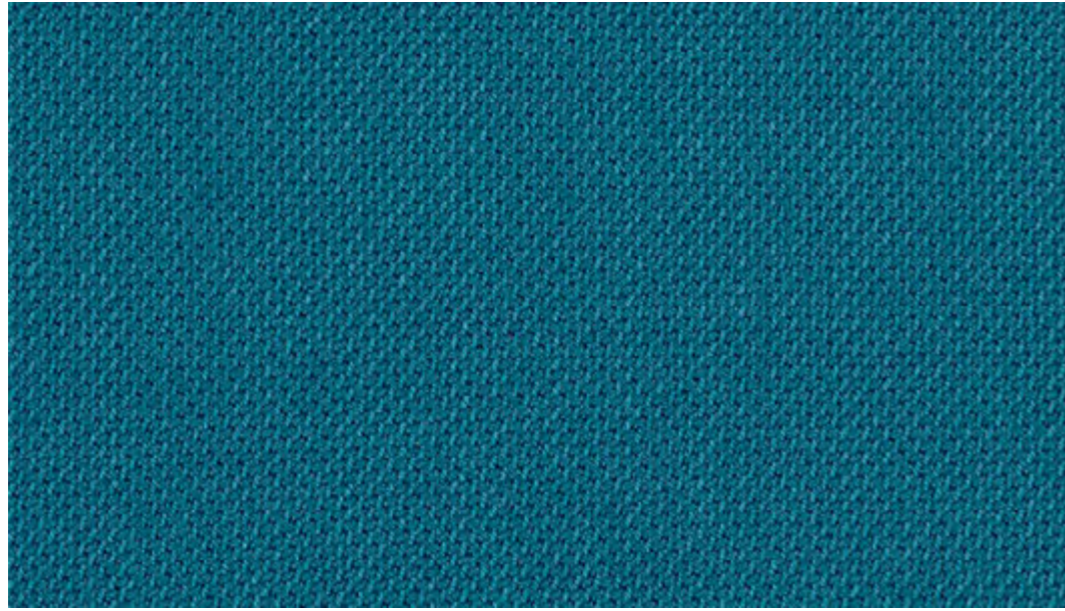
63102



64089



61186



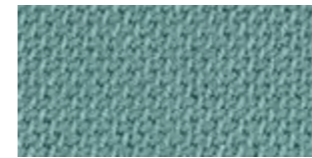
66192



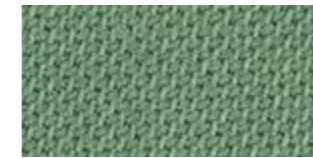
65114



67098



67101



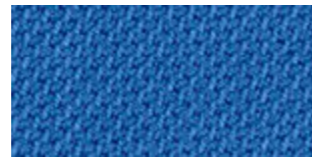
68210



62104



61190



66190



67097



67100



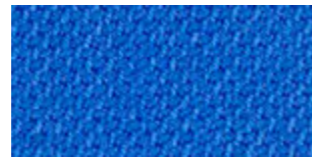
67094



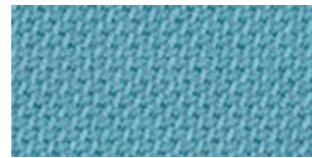
67093



65116



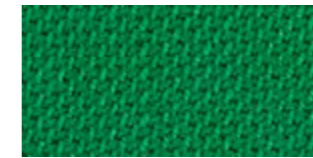
66189



66191



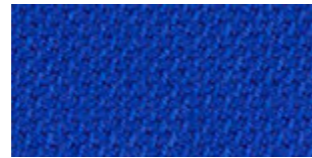
66193



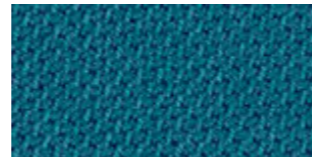
68211



65077



66075



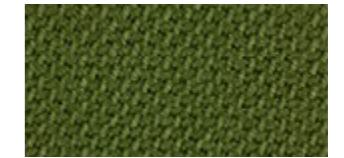
66192



66194



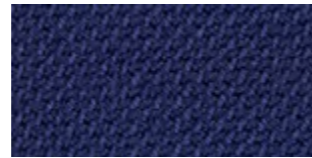
67096



67095



65115



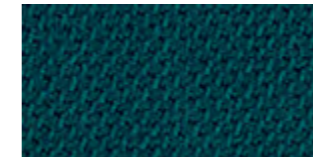
66005



66071



66144



67099

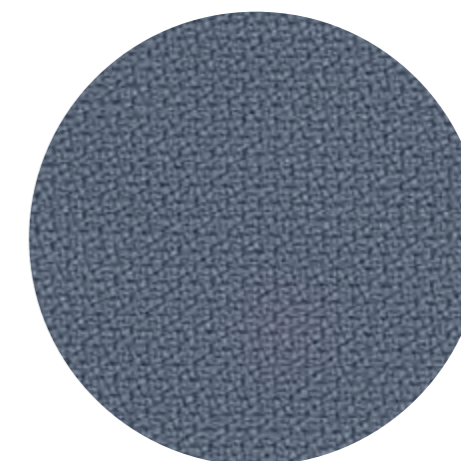


68209

SELECT™

Select specifications: www.gabriel.dk

Please be aware that the PDF colour shades can appear different from the real fabric colours.
We advise you to request actual fabric samples before ordering.



STEP™

by Gabriel

Standard Collection

profim

Step

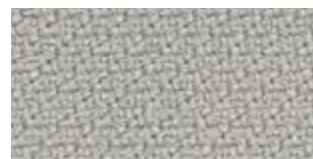
grupa cenowa 3

60090	63075
60091	66152
60999	67004
62057	68161

Extended Collection

Wszystkie kolory poza standardowymi dostępne są z terminem realizacji 6-8 tygodni. Szczegóły wyceny dostępne są u właściwego RDS (Regionalnego Dyrektora Sprzedaży).





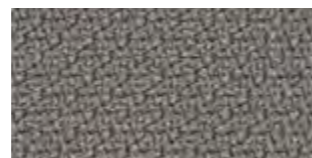
60004



60091



61149



60011



62057



60092



61103



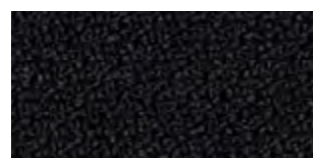
66019



60090



61150



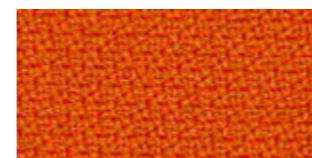
60999



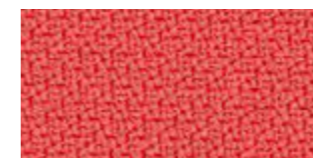
60089



60021



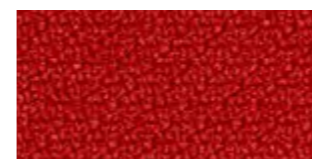
63082



64178



65092



63012



64180



65023



63075



64179



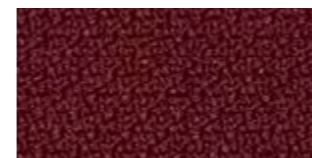
65047



64177



65093



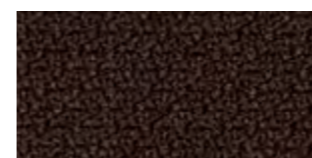
64159



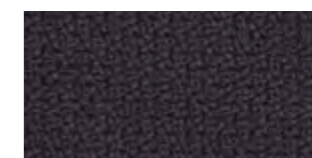
64013



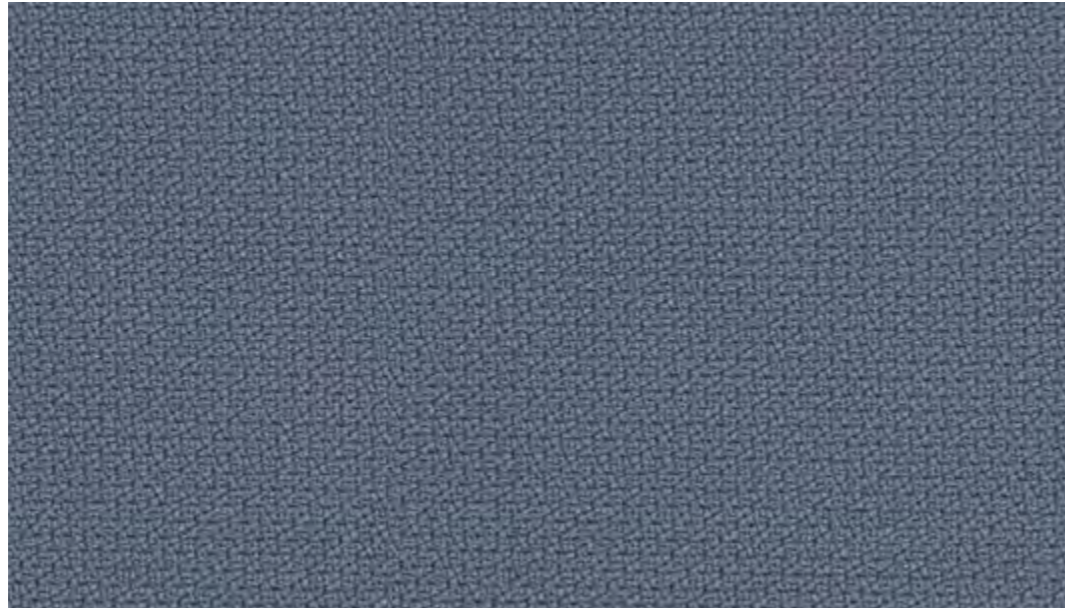
65094



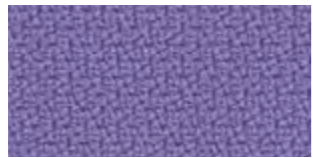
61102



65095



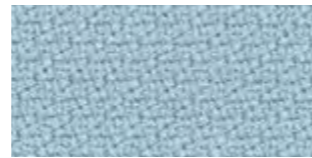
66152



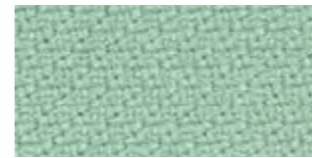
65090



66152



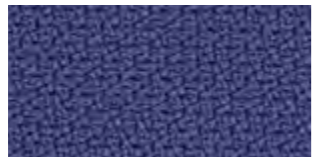
67004



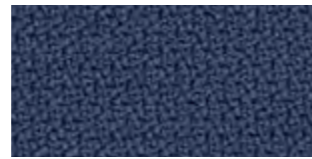
68118



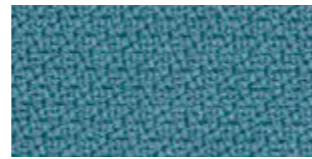
62073



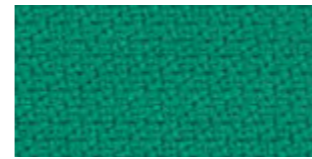
65091



66148



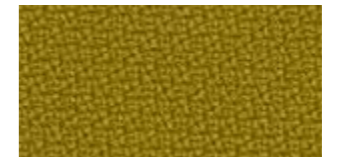
67072



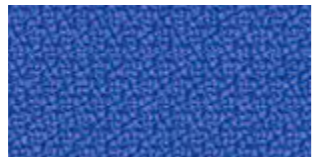
68157



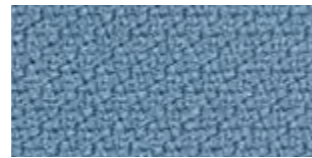
68163



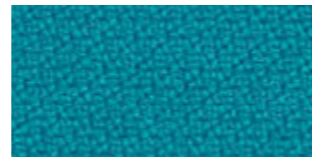
68164



66150



66018



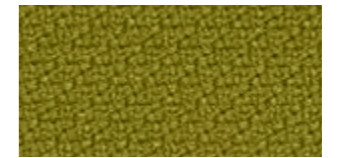
67073



68159



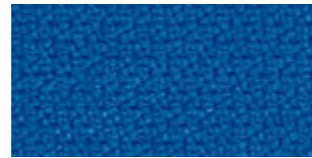
68162



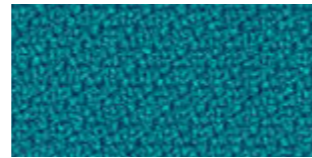
68119



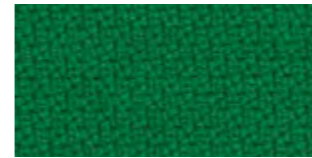
66149



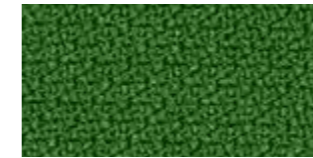
66151



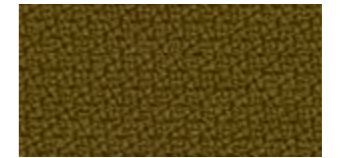
67007



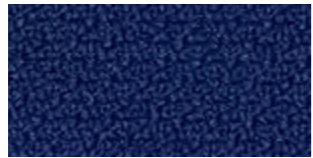
68160



68120



68165



65018



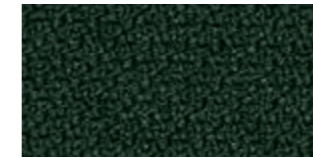
65011



68158



68161



68121

STEP™

Step specifications: www.gabriel.dk

Please be aware that the PDF colour shades can appear different from the real fabric colours.
We advise you to request actual fabric samples before ordering.

Synergy

camira

Standard Collection

profim

Synergy

grupa cenowa 3

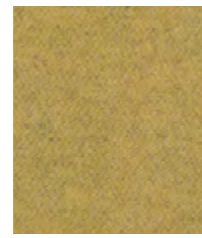
LDS08	LDS56
LDS16	LDS62
LDS17	LDS73
LDS49	LDS74

Extended Collection

Wszystkie kolory poza standardowymi dostępne są z terminem realizacji 6-8 tygodni. Szczegóły wyceny dostępne są u właściwego RDS (Regionalnego Dyrektora Sprzedaży).



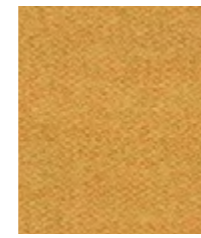
Bracket
LDS23



Summon
LDS45



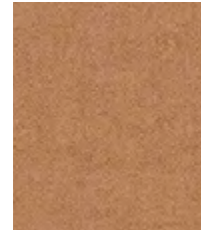
Lateral
LDS28



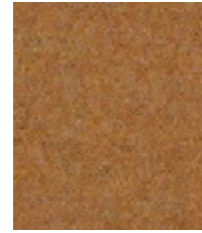
Relate
LDS44



Marry
LDS43



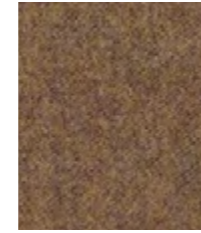
Loop
LDS18



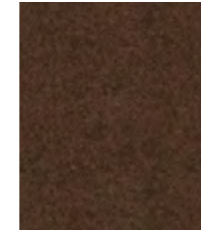
Frame
LDS22



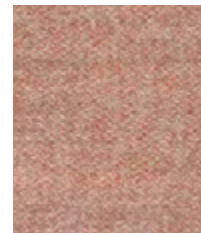
Success
LDS76



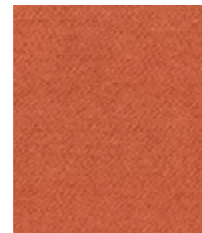
Linea
LDS37



Collective
LDS39



Affinity
LDS74



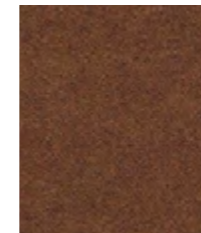
Contribution
LDS75



Work
LDS73



Combo
LDS77



Cordial
LDS78



Congregate
LDS83



Likeness
LDS82



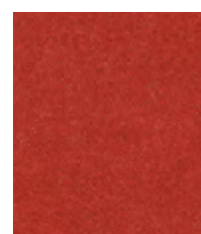
Similar
LDS81



Mutual
LDS84



Global
LDS86



Open
LDS71



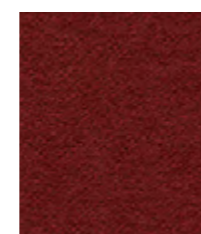
Apt
LDS80



Share
LDS85



Values
LDS87



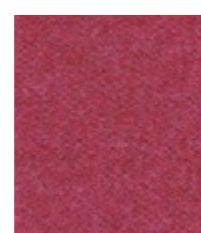
Amiable
LDS79



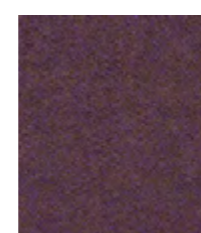
Fate
LDS07



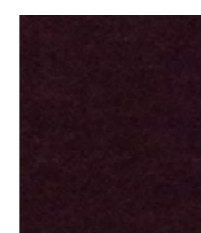
Compose
LDS72



Medley
LDS36



Together
LDS70



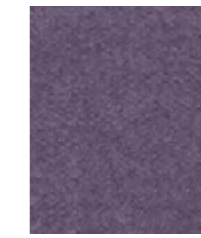
Process
LDS88



Venture
LDS05



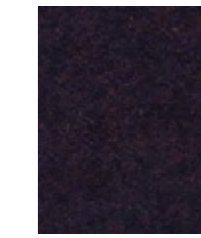
Fellowship
LDS66



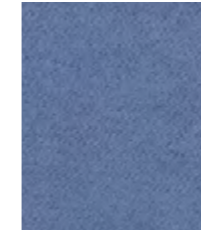
Warmth
LDS67



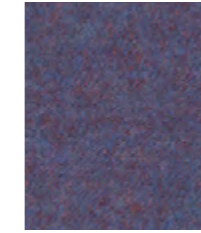
Collaborate
LDS68



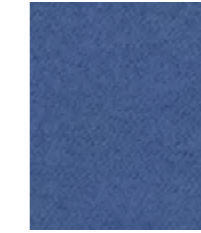
Assemble
LDS61



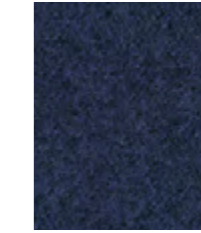
Huddle
LDS65



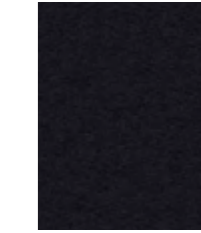
Order
LDS64



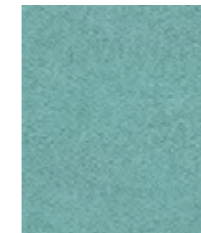
Guild
LDS63



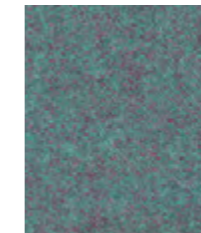
Alike
LDS62



Sync
LDS69



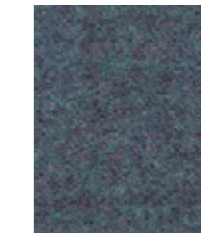
Support
LDS55



Kinship
LDS56



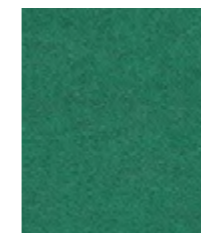
Engage
LDS57



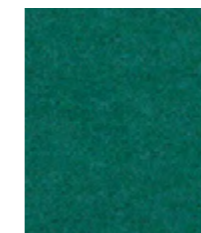
Family
LDS58



Unity
LDS38



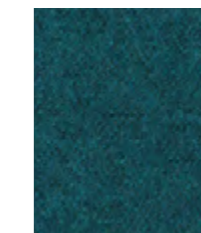
Comply
LDS52



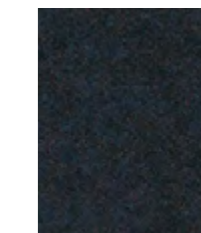
Kindness
LDS51



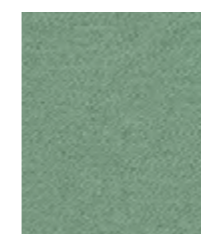
League
LDS50



Group
LDS59



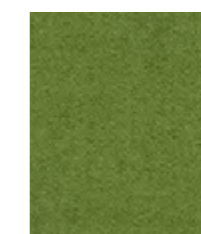
Accord
LDS60



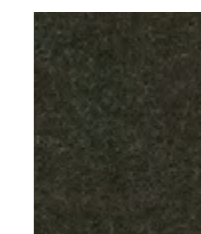
Regard
LDS54



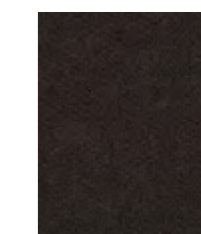
Pact
LDS53



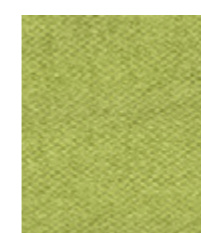
Integrate
LDS47



Couple
LDS41



Bridge
LDS26



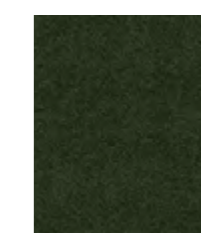
Gather
LDS46



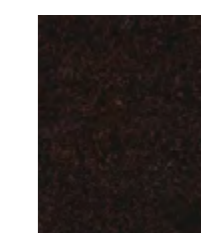
Append
LDS49



Interfuse
LDS48

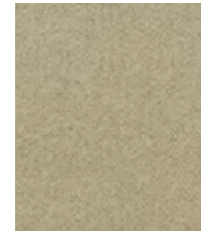


Intertwine
LDS42

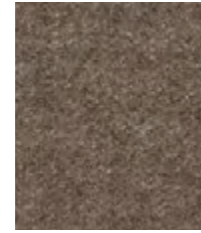


Co-operate
LDS40

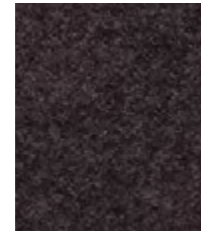
Photographic fabric scans are not colour accurate. Always request actual fabric samples before ordering.



Chain
LDS19



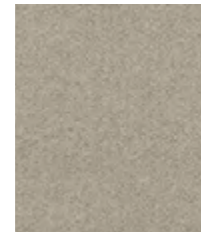
Tag
LDS33



Wed
LDS34



Serendipity
LDS08



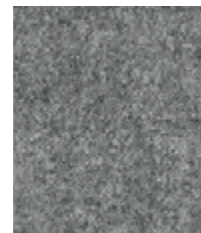
Level
LDS20



Team
LDS21



Affix
LDS32



Partner
LDS16



Bond
LDS31



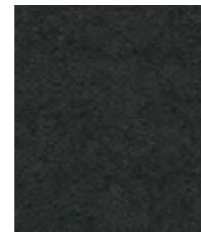
Compound
LDS25



Chemistry
LDS35



Hook
LDS29



Seek
LDS27

Synergy - Product information



Task seating



Soft seating



Cigarette & Match



Acoustic



Year guarantee

With Treatment



Curtains



Medium Hazard



Epitomising natural simplicity, Synergy is a wool rich fabric which is at once both irresistibly soft and ultra-high performing. Delicately felted, with a beautifully relaxed drape, the understated aesthetics showcase the intriguing colouration of this considered textile. Featuring exquisite fibre dyed shades and sumptuous piece dyed solids within its palette of 75 colourways, there truly is a tone for every scheme.

Technical information

UK

Composition
95% Virgin Wool, 5% Polyamide

Environment
Certified to the EU Ecolabel
Certified to Indoor Advantage™ Gold

Width
140 cm minimum

Weight
400 g/m² ±5% (560 g/lin.m ±5%)

Abrasion Resistance*
Heavy duty/10 year guarantee
Independently certified to ≥100,000 Martindale cycles

Flammability
EN 1021 - 1 (cigarette)
EN 1021 - 2 (match)
BS 7176 Low Hazard
NF D 60-013
ONORM B 3825 & A 3800-1 (over CMHR 58kg/m³ Foam)
UNI 9175 Classe 1 IM
EN 13501-1 Adhered Class D, s1, d0
IMO FTP Code (Part 8)
The Furniture and Furnishing (Fire Safety) Regulations 1988 (UK domestic cigarette and match)

Optional: Please specify when ordering:
BS 5852 Ignition Source 5 when FR treated
BS 7176 Medium Hazard when FR treated
EN 13501-1 Adhered Class B, s1, d0 when FR treated
EN 13501-1 Un-adhered Class D, s2, d0 when FR treated
BS 5867-2: Type B Curtains & Drapes when FR treated
Note: Flammability performance is dependent on components used. Our certificates show what substrates have been used in our tests. For composite tests customers must ensure their complete furniture meets the necessary standards.

Light Fastness
5 (ISO 105 - B02)

Fastness to Rubbing
Wet: 4, Dry: 4 (ISO 105 - X12)

Acoustic Properties
Acoustically transparent. Acoustic graphs available upon request.

Cleaning
Vacuum regularly. Wipe with a damp cloth using a proprietary upholstery shampoo/soap. For deeper cleaning use steam or professionally dry clean. Full details can be found in our cleaning and disinfection guide.

*Abrasion testing produces a wide variability of results even from the same test sample. The independent certificate of ≥100,000 cycles is available on our website or from our customer service team. Internally we also specify this product at >100,000 cycles which we believe is realistic for repeatability of testing. Please be aware that abrasion testing alone is not a reliable indicator of the actual wear performance of fabrics. We're so confident in the durability of our products that we provide a robust 10 year guarantee (full details available). Please note that seam performance is dependent on seam construction and needle and thread type. We recommend that appropriate sewing advice be taken. Batch to batch variations in shade may occur within commercial tolerances. We reserve the right to alter technical specifications without notice. The Unregistered Design Rights and the Copyright in all designs are the exclusive property of Camira Fabrics Limited.

D

Zusammensetzung
95% Schurwolle, 5% Polyamid

Umweltfreundlich
Nach Zertifikat EU Ecolabel
Nach Zertifikat Indoor Advantage™ Gold

Breite
140 cm nutzbare Breite

Gewicht
400 g/m² ±5% (560 g/lf.d.m ±5%)

Scheuerfestigkeit*
Schwerer Objekteinsetz/10 Jahre Garantie. Extern zertifiziert mit ≥100,000 Scheuertouren Martindale

Feuersicherung
EN 1021 - 1 (Zigarettentest)
EN 1021 - 2 (Streichholztest)
BS 7176 Low Hazard
NF D 60-013
ONORM B 3825 & A 3800-1 (mit CMHR 58kg/m³ Schaum)
UNI 9175 Classe 1 IM
EN 13501-1 Adhered Class D, s1, d0
IMO FTP Code (Part 8)
The Furniture and Furnishing (Fire Safety) Regulations 1988 (UK Wohnmöbel Zigarettentest und Streichholztest)

Bitte bei Auftragserteilung angeben:
BS 5852 Ignition Source 5 wenn mit FR ausgerüstet
BS 7176 Medium Hazard wenn mit FR ausgerüstet
EN 13501-1 Adhered Class B, s1, d0 wenn mit FR ausgerüstet
EN 13501-1 Un-adhered Class D, s2, d0 wenn mit FR ausgerüstet
BS 5867-2: Type B Curtains & Drapes wenn mit FR ausgerüstet
Bemerkung: Die Schwerentflammbarkeit hängt von den verwendeten Komponenten ab. Unsere Zertifikate zeigen auf, welche Substrate bei den Tests verwendet wurden. Bei Verbundtests muss sichergestellt sein, daß das komplette Möbel den entsprechenden Standards entspricht.

Lichtechtheit
5 (ISO 105 - B02)

Reibechtheit
Nass: 4, Trocken: 4 (ISO 105 - X12)

Akustische Eigenschaften
Akustisch durchlässig. Akustische Messwerte auf Anfrage.

Reinigung
Regelmässig absaugen. Mit einem feuchten Tuch abwischen oder mit einem geeigneten Polstershampoo behandeln. Für eine Grundreinigung bitte Dampf oder professionelle Trockenreinigung verwenden. Weitere Informationen finden Sie in unserem Leitfaden zur Reinigung und Pflege.

*Die Scheuerfestigkeitsprüfung ergibt selbst bei gleichen Testmustern stark abweichende Ergebnisse. Das Zertifikat eines unabhängigen Prüfinstitutes über ≥100,000 Scheuertouren erhalten Sie von unserem Vertriebsdienst oder auf unserer Webseite. Intern spezifizieren wir auch dieses Produkt mit >100,000 Scheuertouren, die in der Serienfertigung als realistisch angenommen werden. Bitte nehmen Sie zur Kenntnis, dass die Scheuerfestigkeitsprüfung allein keine Aussagekraft über die Langlebigkeit eines Bezugsstoffes hat. Wir sind von der Langlebigkeit unserer Produkte überzeugt und bieten daher 10 Jahre Garantie (Details auf Anfrage). Eine optimale Nähtaureisfestigkeit hängt von der Nähmaschine, der verwendeten Nadel und dem Näh-Garn ab. Wir empfehlen daher Nähversuche durchzuführen. Handelsübliche Farbabweichungen können auftreten und berechtigen nicht zur Reklamation. Wir behalten uns die Änderung technischer Spezifikationen vor. Die registrierten und nicht registrierten Urheberrechte der Dessinierungen sind ausschliessliches Eigentum der Camira Fabrics Limited.

F

Composition
95% Laine Vierge, 5% Polyamid

Écologique
Avec le certificat EU Ecolabel
Certifié à Indoor Advantage™ Gold

Largeur
140 cm minimum

Poids
400 g/m² ±5% (560 g/m.l ±5%)

Résistance à l'abrasion*
Usage intense/Garantie 10 ans
Certificat indépendant ≥100,000 cycles Martindale

Flammabilité
EN 1021 - 1 (cigarette)
EN 1021 - 2 (allumette)
BS 7176 Low Hazard
NF D 60-013
ONORM B 3825 & A 3800-1 (avec CMHR 58kg/m³ Mousse)
UNI 9175 Classe 1 IM
EN 13501-1 Adhered Class D, s1, d0
IMO FTP Code (Part 8)
The Furniture and Furnishing (Fire Safety) Regulations 1988 (UK domicile cigarette et allumette)

Prière de la mentionner lors de la commande:
BS 5852 Ignition Source 5 si traitement FR
BS 7176 Medium Hazard si traitement FR
EN 13501-1 Adhered Class B, s1, d0 si traitement FR
EN 13501-1 Un-adhered Class D, s2, d0 si traitement FR
BS 5867-2: Type B Curtains & Drapes si traitement FR
Notez: La performance de flammabilité dépend des composantes utilisées. Nos certificats indiquent les substrats utilisés dans nos tests. Pour les tests composites, les clients doivent s'assurer que leurs meubles complets satisfont aux normes nécessaires.

Solidité à la lumière
5 (ISO 105 - B02)

Solidité au frottement
Mouillé: 4, Sec: 4 (ISO 105 - X12)

Propriétés Acoustiques
Acoustiquement transparent. Graphiques acoustiques disponibles sur demande.

Nettoyage
Passez l'aspirateur régulièrement. Essayez avec un chiffon humide en utilisant un shampoing/savon pour tissus d'ameublement exclusif. Pour un nettoyage en profondeur, utilisez la vapeur ou un nettoyage à sec professionnel. Vous trouverez tous les détails dans notre guide de nettoyage et de désinfection.

*Les tests de résistance à l'abrasion proposent une large variété de résultat final, parfois sur le même échantillon de tissu. Le certificat indépendant de ≥100,000 cycles est disponible sur notre site internet; vous pouvez également contacter notre Service Clients. Nous validons également – en interne – à >100,000 cycles; ce qui est, d'après nous, plus réaliste dans le but d'obtenir une continuité égale des résultats de tests. Merci de noter que l'abrasion seule ne constitue pas un indicateur de confiance dans la performance du tissu à long terme. Nous avons une confiance absolue en nos produits et leur durabilité, c'est pour cela que nous vous offrons une garantie commerciale de 10 ans. Veuillez noter que la performance du joint dépend de la construction ainsi que de l'aiguille et du type de fil utilisés. Une variation de couleurs peut provenir (commerciallement tolérable). Nous réservons le droit de changer les spécifications techniques sans préavis. Les Droits de Conception non-enregistrés et les droits d'auteur de tous les motifs sont la propriété exclusive de Camira Fabrics Limited.

ES

Composición
95% Lana Virgen, 5% Polyamid

Ambiental
Certificado con EU Ecolabel
Certificado de Indoor Advantage™ Gold

Ancho
140 cm mínimo

Peso
400 g/m² ±5% (560 g/lin.m ±5%)

Resistencia a la abrasión*
Garantía de 10 años con uso intenso
Independientemente del certificado de ≥100,000 Ciclos Martindale

Inflamabilidad
EN 1021 - 1 (cigarillo)
EN 1021 - 2 (cerilla)
BS 7176 Low Hazard
NF D 60-013
ONORM B 3825 & A 3800-1 (sobre 58kg/m³ Foam CMHR)
UNI 9175 Classe 1 IM
EN 13501-1 Adhered Class D, s1, d0
IMO FTP Code (Part 8)
The Furniture and Furnishing (Fire Safety) Regulations 1988 (UK doméstico cigarillo y cerilla)

Por favor especificar cuando se requiere en el pedido:
BS 5852 Ignition Source 5 estando con tratamiento FR
BS 7176 Medium Hazard estando con tratamiento FR
EN 13501-1 Adhered Class B, s1, d0 estando con tratamiento FR
EN 13501-1 Un-adhered Class D, s2, d0 estando con tratamiento FR
BS 5867-2: Type B Curtains & Drapes estando con tratamiento FR
Nota: El rendimiento de la inflamabilidad depende de los componentes usados. Nuestros certificados muestran qué substratos se han usado en nuestros tests. Para tests compuestos nuestros clientes deben asegurar si sus muebles cumplen la normativa al uso.

Solidez a la luz
5 (ISO 105 - B02)

Solidez al rozamiento
Húmedo: 4, Seco: 4 (ISO 105 - X12)

Acústico Propiedades
Acústicamente transparente. Gráficos disponibles bajo petición.

Limpieza
Uso aspirador regularmente. Limpiar con un trapo usando jabón y agua o producto limpieza para tapicerías. Para una limpieza más profunda usen vapor o limpieza en seco profesional. Los detalles completos se encuentran en nuestra guía de limpieza y desinfección.

*Los Test de Abrasión producen unos resultados muy variados incluso con la misma muestra. El certificado de ≥100,000 ciclos Martindale está disponible en nuestra web o se puede pedir al Departamento Comercial. Internamente también certificamos este producto >100,000 ciclos, que pensamos que es lo más realista posible en este caso, con una repetición de resultados tan dispares. Tengan en cuenta que el Test de Abrasión solo no es un indicador fiable sobre el desgaste de un tejido. De hecho, estamos tan convencidos en la durabilidad de nuestros tejidos, que ofrecemos una garantía de 10 años (detalles completos disponibles). Tenga en cuenta que el rendimiento de la costura depende de la construcción de la costura, además de la aguja y del tipo de rosca. Le recomendamos que se aconsejen para coser la costura. Las variaciones de lote a lote en la sombra se puede producir dentro de tolerancias comerciales. Nos reservamos el derecho a efectuar modificaciones técnicas sin previo aviso. Los derechos sobre los diseños no registrados y los derechos de autor en todos los diseños son propiedad exclusiva de Camira Fabrics Limited.

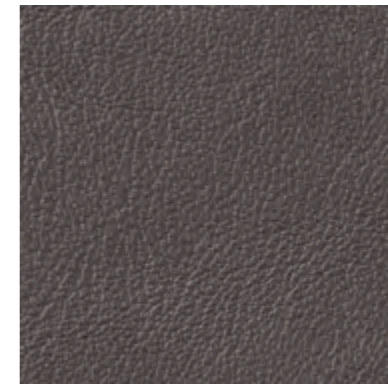
Skóra Leather Leder

Standard
Collection

④ Skóra
Leather
Leder



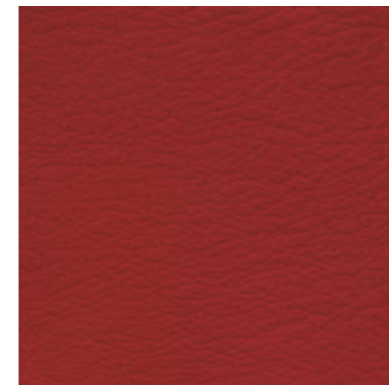
S-18



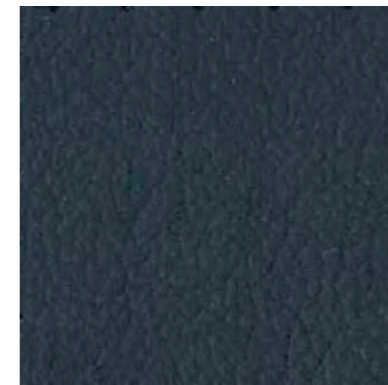
S-16



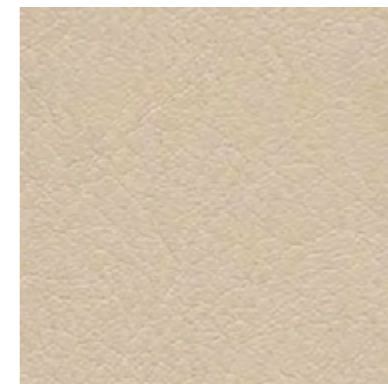
S-28



S-19



S-27



S-21



S-10

Skóra⁴ Leather Leder

Extended Collection

Skóra Leather Leder

Premium



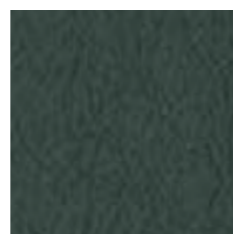
S-20



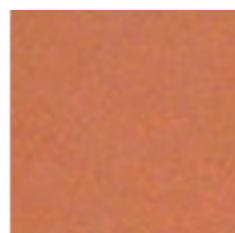
S-22



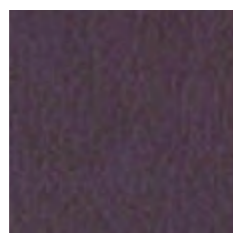
S-23



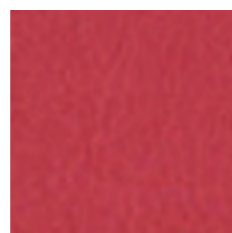
S-26



S-24



S-29



S-25

PL

Skład:
100% skóra

Grubość:
0,8-1,0 mm (+/- 15%)

Odporność barwy na tarcie (na sucho, na mokro): 4-5 (PN-EN ISO 11640), **Trudnozapałność – papieros:** UNI EN 1021-1, **Trudnozapałność – zapalka:** UNI EN 1021-2, **Odporność na światło:** 5 (BS EN ISO 105-B02)

Pielęgnacja:
Skóra jest surowcem naturalnym. Wszelkie zadrapania, blizny, ukłucia owadów, różnice w fakturze i odcieniach są naturalne i nie obniżają jej jakości. Koniecznie konserwacji należy dokonać specjalnymi środkami do pielęgnacji skóry, które tworzą powłokę ochronną, odporną na wodę i substancje oleiste.

EN

Composition:
100% leather

Thickness:
0.8-1.0 mm (+/- 15%)

Colour fastness to rubbing (wet, dry): 4-5 (PN-EN ISO 11640), **Flammability – cigarette:** UNI EN 1021-1, **Flammability – match:** UNI EN 1021-2, **Light fastness:** 5 (BS EN ISO 105-B02)

Maintenance:
Leather is a natural material. All scratches, scars, insect pricks, differences in the texture and shades are natural and do not lower its quality. Proper maintenance should be performed with the use of special agents creating a protection layer, resistant against water and oil substances.

DE

Zusammensetzung:
100% Leder

Dicke:
0,8-1,0 mm (+/- 15%)

Reibechtheit (Nass, Trocken): 4-5 (PN-EN ISO 11640), **Brandschutz – Zigarettentest:** UNI EN 1021-1, **Brandschutz – Streichholztest:** UNI EN 1021-2, **Lichtechtheit:** 5 (BS EN ISO 105-B02)

Reinigung:
Das Leder ist ein Naturprodukt. Sowohl Risse, Narben, Insektstiche als auch Farbunterschieden sind natürlich und sind keine Qualitätsmängel, sondern Kennzeichen eines echten Naturprodukts. Zur Reinigung sollte man nur entsprechende Reinigungsmittel anwenden, die eine Schutzschicht gegen das Wasser und ölige Substanze bilden.

Przedstawione wzory wykończeń nie stanowią oferty w rozumieniu Kodeksu Cywilnego. W ramach stałego doskonalenia produktów firma zastrzega sobie prawo do wprowadzania zmian w ofercie.

The offer presented in the pattern book is not a valid legal offer. In policy of continuous product improvement our company reserves right to make changes at any time without prior notice.

Dieser Katalog ist kein Angebot im rechtlichen Sinn. Wir behalten uns Änderungen der Produkten im Sinne einer technischen Entwicklung oder Änderungen in Form und Farbe vor.

Ascot

BASIC

Standard Collection profim

Skóra Premium grupa cenowa 5

2180	2875
2760	2900
2840	
2845	

Extended Collection

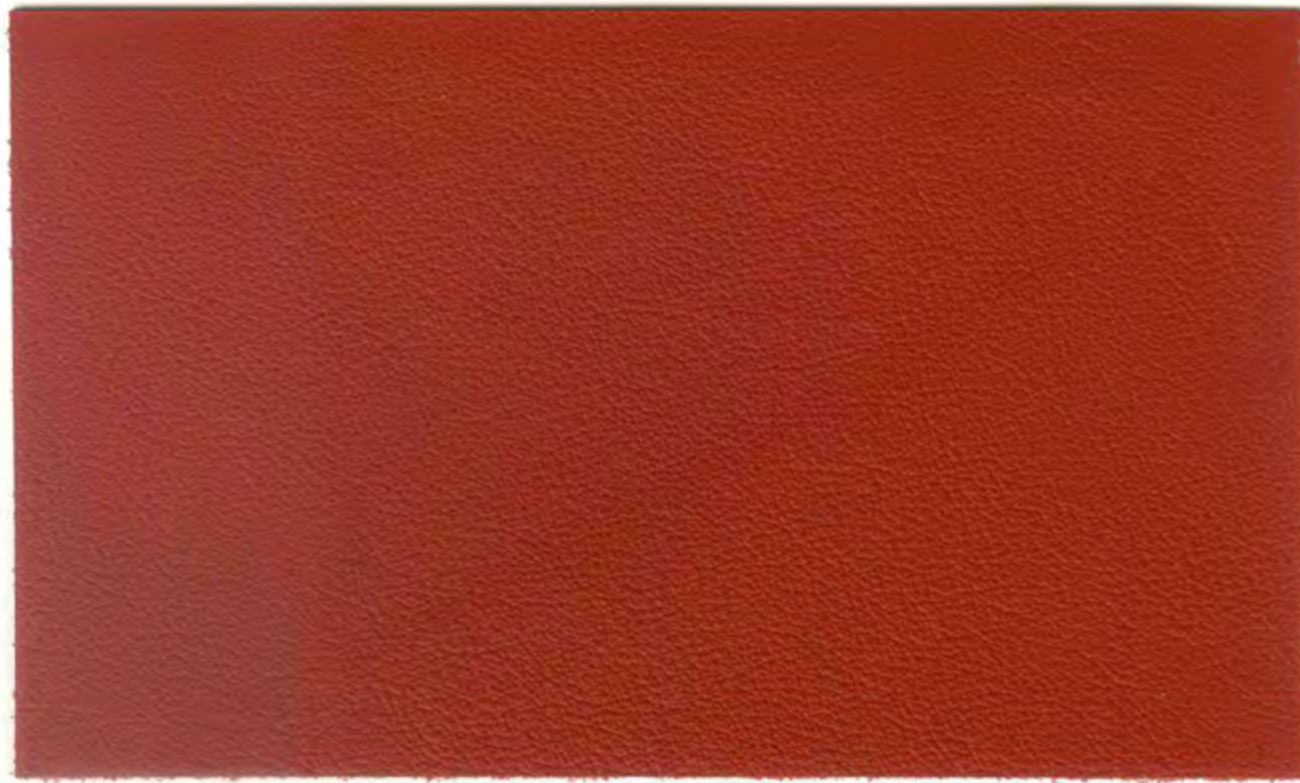
Wszystkie kolory poza standardowymi dostępne są z terminem realizacji 6-8 tygodni. Szczegóły wyceny dostępne są u właściwego RDS (Regionalnego Dyrektora Sprzedaży).



gmelichleder

das Leder für Anspruchsvolle
leading the way in leather

Ascot



pumpkin 2420



oxblood 2430



cherry 2425



pumpkin 2420



cognac 2435



viola 2440



rubin 2360



salmon 2410



aubergine 2480



mohn 2340



orange 2415



brasil 2855



redbrown 2860



mocca 2880



black 2900



brandy 2850



cioccolata 2875



hazelnut 2845



caramel 2840



cocos 2160



pearl 2180



mirabelle 2260



ecru 2155



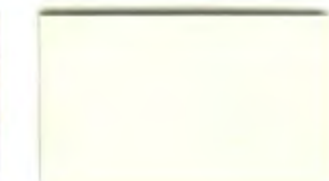
white 2100



almond 2150



sand 2140



offwhite 2110



blue 2580



lupine 2530



heaven 2520



indigo 2560



royal 2540



agave 2620



grape 2535



kobalt 2550



amazonas 2660



violet 2390



mole 2780



jade 2680



granite 2760



rock 2750



olive 2640



lightgrey 2720



stone 2740



khaki 2630

Ascot		Leder Spezifikation	
Bezeichnung	Einheit	Anforderung	Prüfvorschrift
Lederdicke	mm	1,0 - 1,2	DIN EN ISO 2589 (DIN 53326)
Weiterreißkraft	N/mm	> 20	DIN EN ISO 3377-1 (DIN 53329)
Reibechtheit	Note	> 4	DIN EN ISO 11640
Haftung der Zurichtung	N/10mm	2	ISO 11644 / IUF 470
Lichtechtheit	Stufe Blauskala	5	DIN EN ISO 105 - B02
Knickungen		20.000	DIN EN ISO 5402 (DIN 53351)
Brandtest			DIN EN 1021 Part I + II

Ascot		Leather Specification	
Characteristic	Unit	Requirement	Test method
Thickness	mm	1,0 - 1,2	DIN EN ISO 2589 (DIN 53326)
Tear strength	N/mm	> 20	DIN EN ISO 3377-1 (DIN 53329)
Rubbing strength	Note	> 4	DIN EN ISO 11640
Adhesion of finish	N/10mm	2	ISO 11644 / IUF 470
Light fastness	class blue scale	5	DIN EN ISO 105 - B02
Flexing endurance		20,000	DIN EN ISO 5402 (DIN 53351)
Flame resistance			DIN EN 1021 Part I + II



gmelichleder

Lederfabrik
Gmelich + Söhne GmbH
Kreuzstraße 65, D-71723 Großbottwar
Tel. +49 7148-9615-0, Fax +49 7148-9615-111
e-Mail: info@gmelich.de, www.gmelich.de



Gmelich + Söhne GmbH

Die Lederproduktion hat in Großbottwar lange Tradition. Im Jahre 1923 gründete der Kaufmann Otto Gmelich mit seinen Söhnen Hugo und Robert die Firma Gmelich + Söhne. Direkt nach der Gründung wurde mit dem Bau der ersten Fabrik begonnen.

Das Produktportfolio wechselte über die Jahre vom Schuhleder in immer stärkerem Maße in den Polstermöbel- und Büro- / Objektbereich. Aber auch Leder für die Bekleidung, Bücher, Trommeln und seit neuestem Leder für die Flugzeugindustrie finden international immer mehr Anklang und Liebhaber.

Heute zählt Gmelich mit rund 115 Mitarbeitern zu den ganz wenigen Gerbereien in Europa, die eine vollstufige Lederherstellung betreiben, also von der rohen Haut bis zum fertigen Leder alle Prozesse im eigenen Hause durchführen, und demnach auch den durchgängigen Einfluss auf die Qualität des fertigen Leders haben.

Die Firmenphilosophie, Leder in höchster Qualität umweltfreundlich herzustellen, sowie zielgerichtete Modernisierungen und Investitionen, sorgten dafür, dass Gmelich bei den renommiertesten Lederverarbeitern der Welt als Topadresse für Leder gilt.

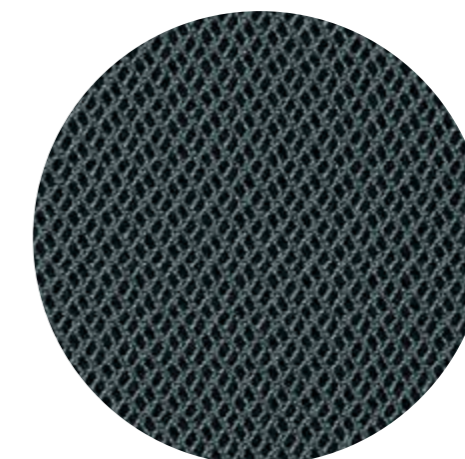
Gmelich + Söhne GmbH

Leather production in Großbottwar follows a long tradition. In 1923 the businessman Otto Gmelich and his sons Hugo and Robert founded the company Gmelich + Söhne, and directly afterwards began building their first factory.

Over the years their product range gradually changed from the production of shoe leather to a steady increase in the production of leather for the upholstery seating and for the office and contract markets. Leather for clothing, books, drums and more recently the aeroplane industry has also gained an international reputation and critical acclaim over the years.

Today Gmelich, with approximately 115 employees, is one of the few tanneries remaining in Europe to oversee the full production; each stage, from treating the raw hide to the production of the finished leather, is carried out in house, enabling the company to keep full control over the quality of the finished product.

The company philosophy, involving the production of high quality leather to environmental standards, along with targeted modernisation and investment, has ensured Gmelich a reputation as a first class source of leather amongst some of the most renowned leather users in the world.



RHYTHM™

by Gabriel

**Standard
Collection**

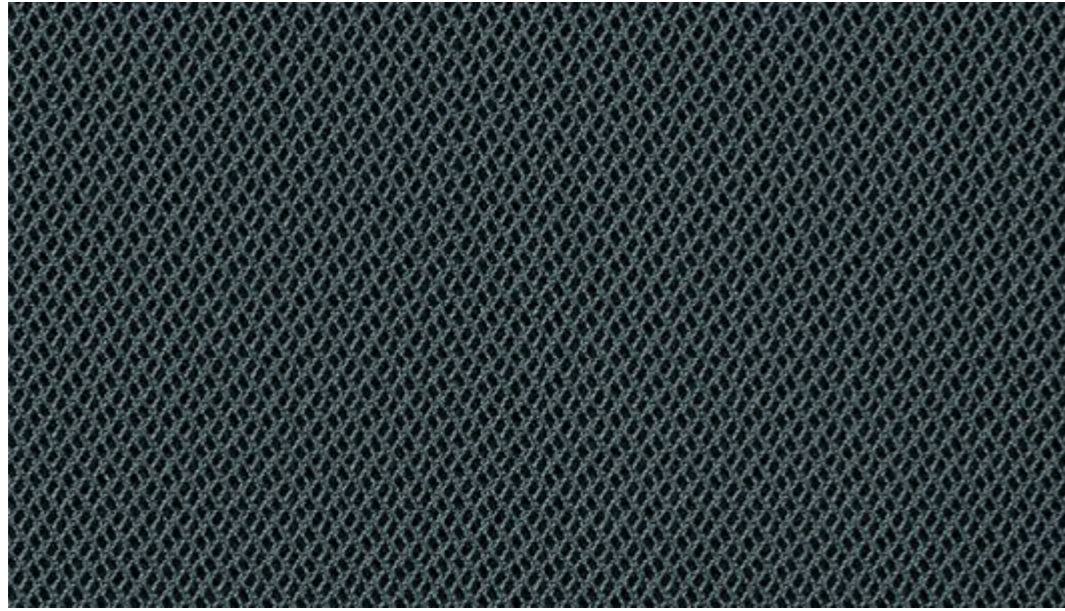
profim

Rhythm

Rhythm 60165 Rhythm 66152
Rhythm 60176 Rhythm 68121
Rhythm 60999
Rhythm 63067

**Extended
Collection**

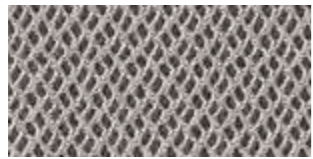
Wszystkie kolory poza standardowymi dostępne są z terminem realizacji 6-8 tygodni. Szczegóły wyceny dostępne są u właściwego RDS (Regionalnego Dyrektora Sprzedaży).



68122



60000



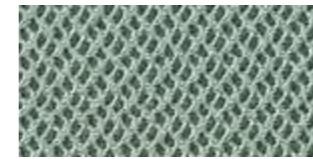
60165



63067



66151



68121



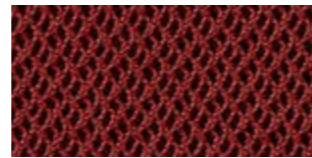
68123



60025



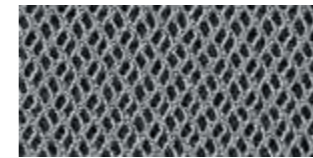
60176



63068



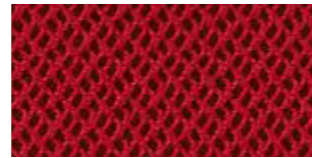
66152



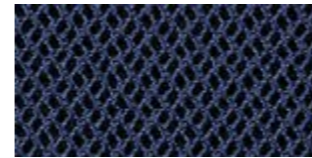
68120



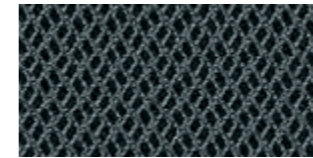
60999



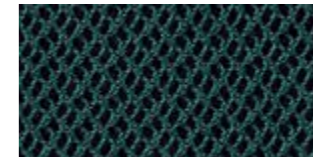
64089



66138



68122

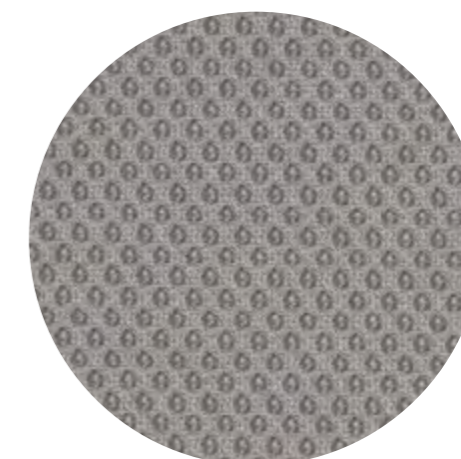


68124

RHYTHM™

Rhythm specifications: www.gabriel.dk

Please be aware that the PDF colour shades can appear different from the real fabric colours.
We advise you to request actual fabric samples before ordering.



RUNNER™

by Gabriel

Standard Collection

profim

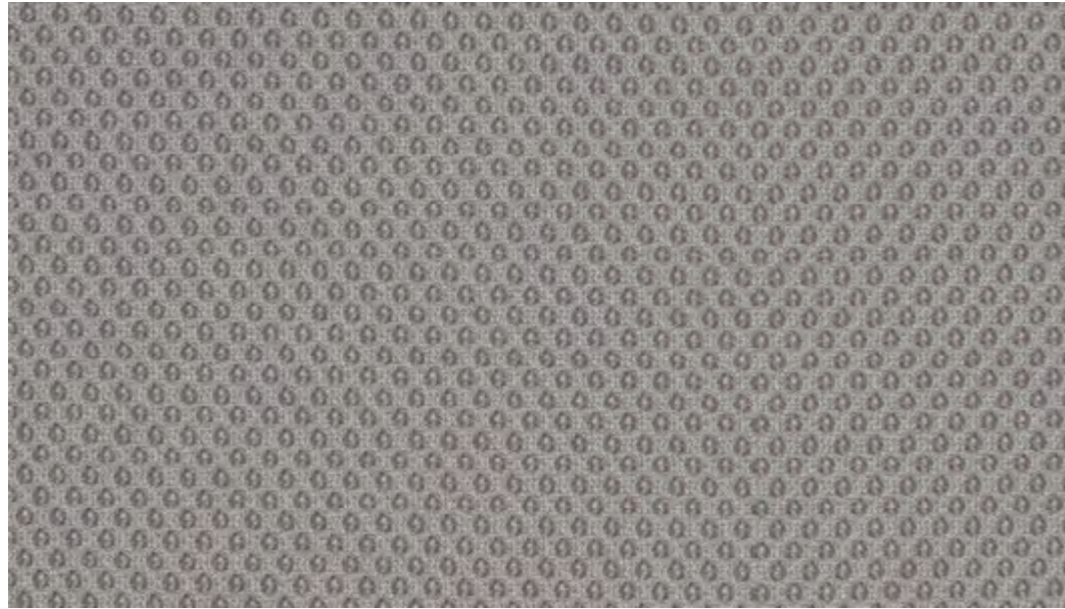
Runner

Runner 60011
Runner 60061
Runner 60999

Extended Collection

Wszystkie kolory poza standardowymi dostępne są z terminem realizacji 6-8 tygodni. Szczegóły wyceny dostępne są u właściwego RDS (Regionalnego Dyrektora Sprzedaży).





60165



60061



61128



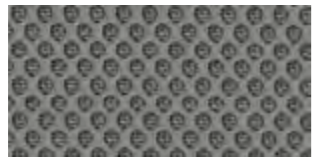
60165



61110



63034



60011



62064



64119



60025



64089



60999



61129



61130



65078



68137



66140



66063



68108



68056



66123



66120



68109



66064

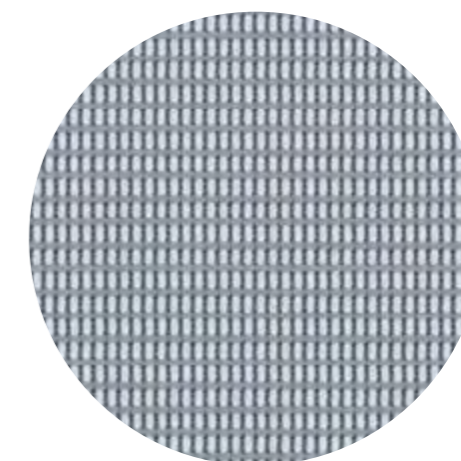


68110

RUNNER™

Runner specifications: www.gabriel.dk

Please be aware that the PDF colour shades can appear different from the real fabric colours.
We advise you to request actual fabric samples before ordering.



STRING™

by Gabriel

Standard Collection

profim

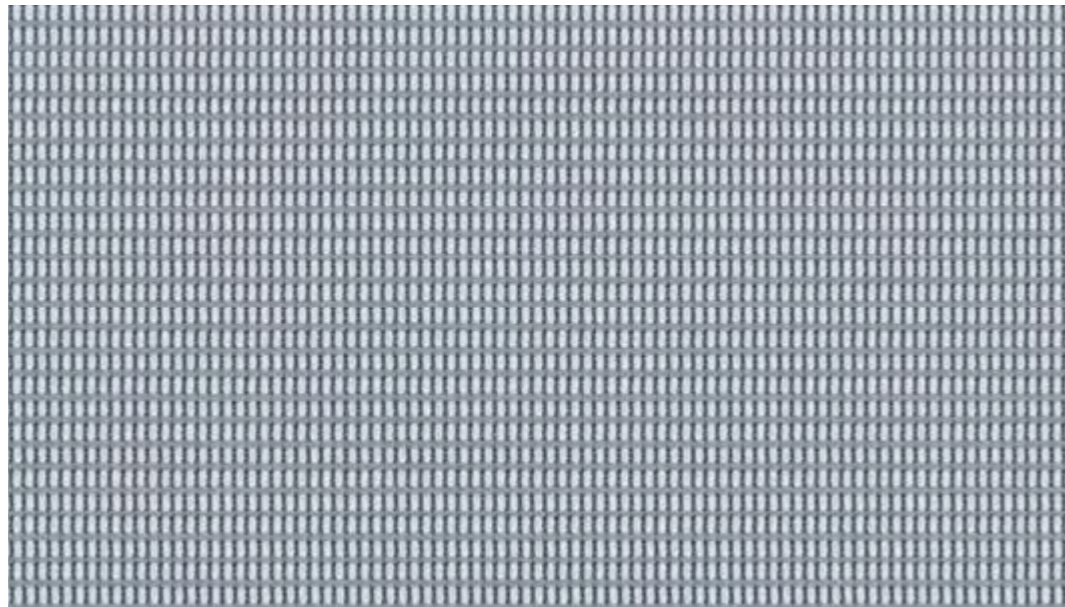
String

String 60118
String 60999

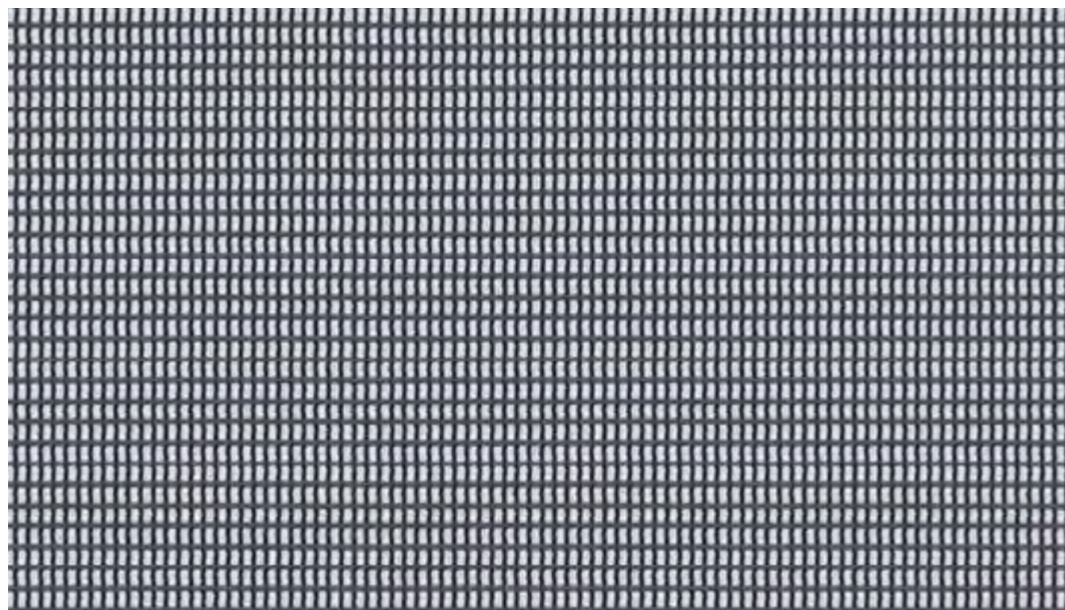
Extended Collection

Wszystkie kolory poza standardowymi dostępne są z terminem realizacji 6-8 tygodni. Szczegóły wyceny dostępne są u właściwego RDS (Regionalnego Dyrektora Sprzedaży).

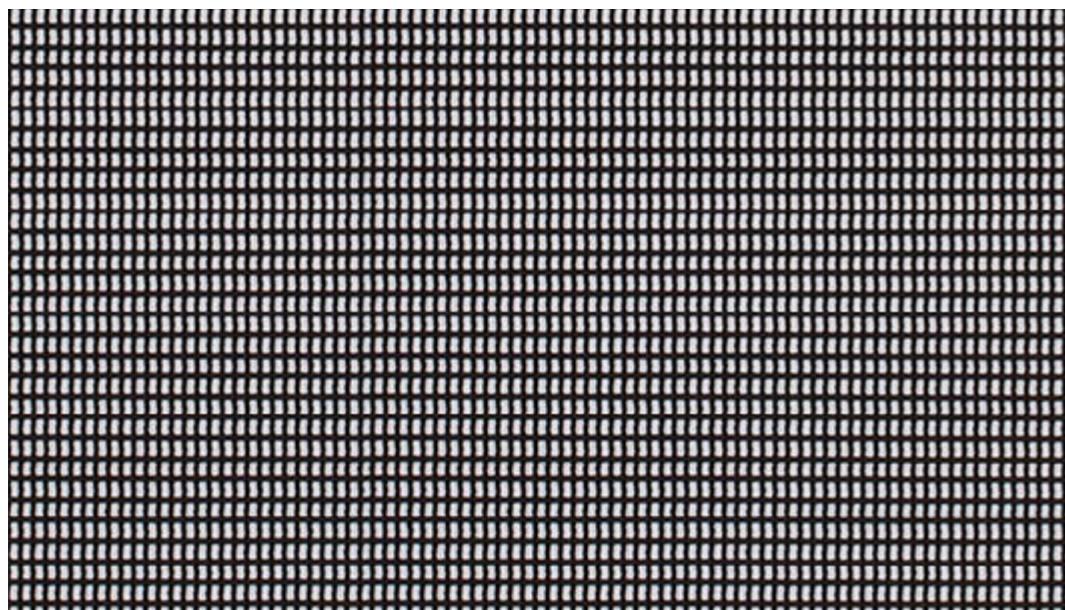




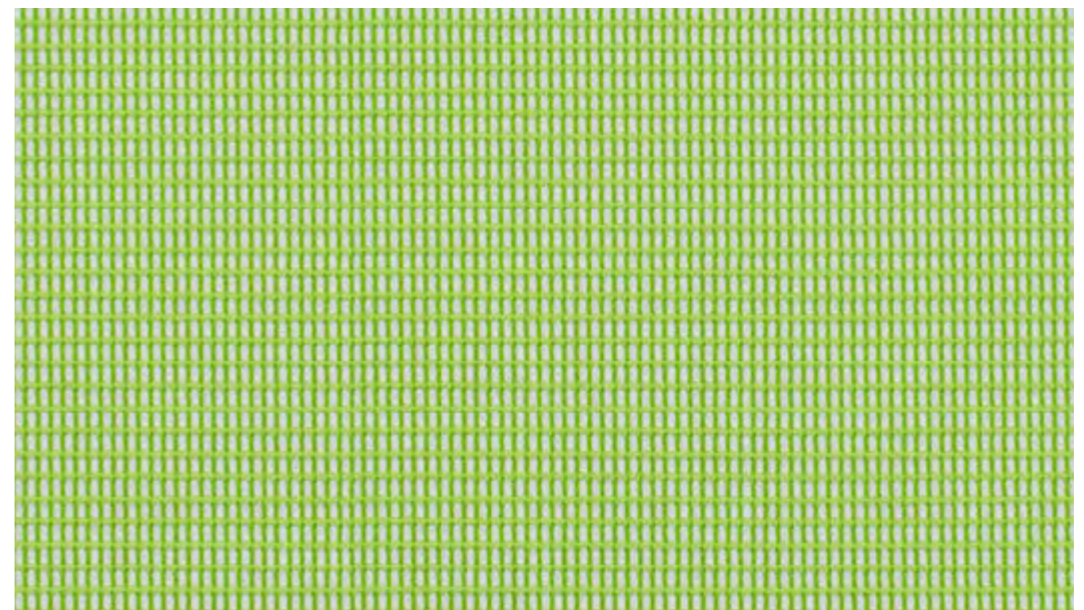
60119



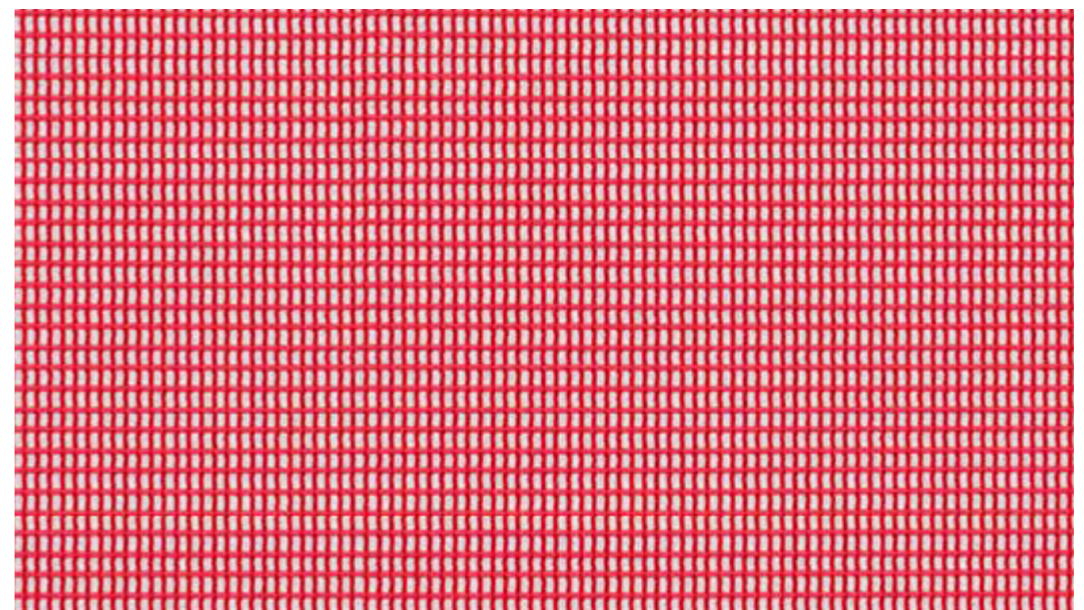
60118



60999



68092



64079

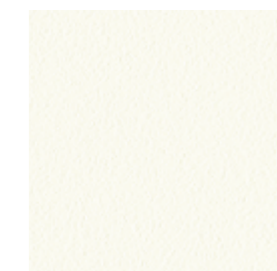
STRING™

String specifications: www.gabriel.dk

Please be aware that the PDF colour shades can appear different from the real fabric colours.
We advise you to request actual fabric samples before ordering.

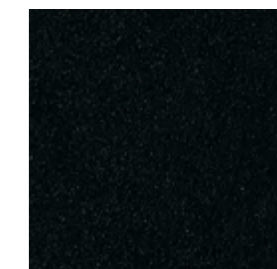
Wykończenia Finishes Oberflächen

Acos^{Pro}, Arca, Ariz, Bit, Com*,
Chic, Chic Lounge, Chic
Stoliki/Tables/Tische, Ellie^{Pro},
Fan, Normo, Nu, Revo Stoliki/
Tables/Tische, Stoliki/Tables/
Tische: SV, SH, SR, Seven,
Zoo*



White
RAL 9016

Acos^{Pro}, Arca, Ariz, Bit, Com*,
Chic, Chic Air, Chic Lounge,
Chic Stoliki/Tables/Tische,
Ellie^{Pro}, Fan, Normo, Nu, Revo
Stoliki/Tables/Tische, Stoliki/
Tables/Tische: SV, SH, SR,
Seven, Sorriso, Sun, Zoo*,
MyTurn Sofa, MyTurn Sofa
Stoliki/Tables/Tische, October
Stoliki/Tables/Tische, SoftBox,
Vancouver Lite, Wall In, Xenon,
Xenon Net



Black
RAL 9005

Acos^{Pro}, Ariz, Chic, Chic
Lounge, Chic Stoliki/Tables/
Tische, Com*, Ellie^{Pro}*, Fan,
Normo, Nu*, Revo Stoliki/
Tables/Tische, Seven, Stoliki/
Tables/Tische: SV, SH, SR,
Zoo*

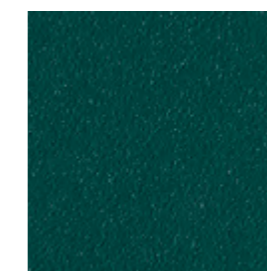


Light Grey
NCS S 2500-N



Grey
NCS S 6500-N

Acos^{Pro}, Ariz, Chic, Chic
Lounge, Chic Stoliki/Tables/
Tische, Com*, Fan, Normo, Nu,
Revo Stoliki/Tables/Tische,
Seven, Stoliki/Tables/Tische:
SV, SH, SR



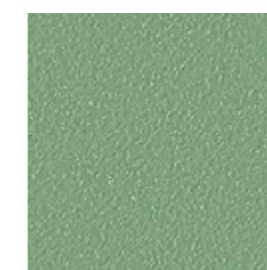
Deep Green
RAL 6004



Navy Blue
RAL 5003



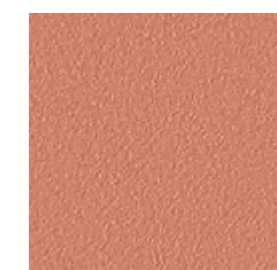
Burgundy
RAL 3005



Salvia/Green
RAL 6021



Blue
RAL 5014



Terracotta
RAL 3012

*Kolory stelaży w poszczególnych konfiguracjach do potwierdzenia w cenniku / Available colours of the frames to be confirmed with the price list / Die verfügbaren Gestellfarben entnehmen Sie bitte der Preisliste

Kolory wykończeń w druku mogą różnić się od rzeczywistych / Finisings colours in print may be different from actual colours / Die dargestellten Farben können aus drucktechnischen Gründen von den realen Farben abweichen

Acos^{Pro}, Arca, Ariz, Bit, Chic,
Chic Air, Chic Lounge, Chic
Stoliki/Tables/Tische, Com,
Ellie^{Pro}, Fan, MyTurn Sofa,
MyTurn Sofa Stoliki/Tables/
Tische, Normo, Nu, October,
October Stoliki/Tables/Tische,
Revo Stoliki/Tables/Tische,
Seven, Sorriso, Sun, Stoliki/
Tables/Tische: SV, SH, SR,
Vancouver Lite, Wall In, Xenon,
Xenon Net, Zoo



MetallikPro

Chic*, Chic Lounge, Chic
Stoliki/Tables/Tische*, Ellie^{Pro}*,
Fan*, Nu*



Gold

Acos^{Pro}, Arca, Ariz, Bit, Chic,
Chic Air, Chic Lounge, Chic
Stoliki/Tables/Tische, Com*,
Fan, MyTurn, MyTurn Sofa,
MyTurn Sofa Stoliki/Tables/
Tische, Nu, October, October
Stoliki/Tables/Tische, Sorriso,
Sun, Stoliki/Tables/Tische: SV,
SH, SR, Vancouver Lite, Wall In,
Xenon, Xenon Net, Zoo*



Chrome

Ellie^{Pro}*



Metalsilver

*Kolory stelaży w poszczególnych konfiguracjach do potwierdzenia w cenniku / Available colours of the frames to be confirmed with the price list / Die verfügbaren Gestellfarben entnehmen Sie bitte der Preisliste

Kolory wykończeń w druku mogą różnić się od rzeczywistych / Finishings colours in print may be different from actual colours / Die dargestellten Farben können aus drucktechnischen Gründen von den realen Farben abweichen

Accis^{Pro}, Action, Arca, Ellie^{Pro},
Fan, LightUp, Motto, MyTurn,
Nu, Playa, Raya, Softbox,
Softbox Stoliki/Tables/Tische,
Stoliki/Tables/Tische SF,
Trillo^{Pro}, Violle, Veris Net, Xenon,
Xenon Net



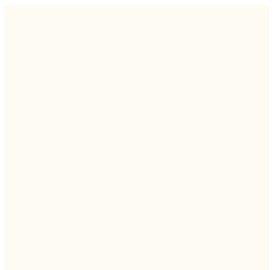
Polished

Arca, Ellie^{Pro}, Nu, Fan, Playa,
Raya, Softbox, Softbox Stoliki/
Tables/Tische, Trillo^{Pro},
Veris Net



MetalikPro

Ellie^{Pro}, Trillo^{Pro}, Nu, Accis^{Pro},
Viole



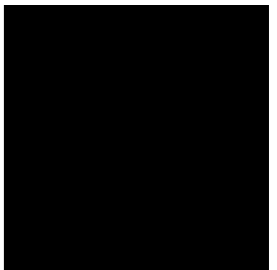
White
RAL 9016

Ellie^{Pro}, Trillo^{Pro}, Nu, Accis^{Pro}



Graphite

Action, Ellie^{Pro}, Softbox, Softbox
Stoliki/Tables/Tische, Trillo^{Pro},
Nu

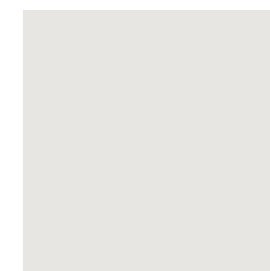


Black
RAL 9005

*Kolory stelaży w poszczególnych konfiguracjach do potwierdzenia w cenniku / Available colours of the frames to be confirmed with the price list / Die verfügbaren Gestellfarben entnehmen Sie bitte der Preisliste

Kolory wykończeń w druku mogą różnić się od rzeczywistych / Finishing colours in print may be different from actual colours / Die dargestellten Farben können aus drucktechnischen Gründen von den realen Farben abweichen

Accis^{Pro}, Ellie^{Pro}, LightUp,
Mickey, Trillo^{Pro}, Violle



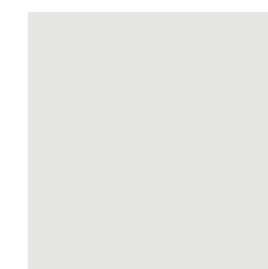
Light Grey
RAL 7047

Mickey



Beige
RAL 7036

Zoo



Light Grey
NCS S 2500-N



Grey
NCS S 6500-N

Mickey, Trillo^{Pro}



Grey
RAL 7043

Accis^{Pro}, Ellie^{Pro}, Trillo^{Pro}*,
LightUp, Violle, Zoo



Black
RAL 9005

*Kolory stelaży w poszczególnych konfiguracjach do potwierdzenia w cenniku / Available colours of the frames to be confirmed with the price list / Die verfügbaren Gestellfarben entnehmen Sie bitte der Preisliste

Kolory wykończeń w druku mogą różnić się od rzeczywistych / Finishings colours in print may be different from actual colours / Die dargestellten Farben können aus drucktechnischen Gründen von den realen Farben abweichen

Ariz



White
CODE 20



Ashen
CODE 517



Black
CODE 01



Olive Green
CODE 513



Gray Blue
CODE 503



Navy
CODE 516



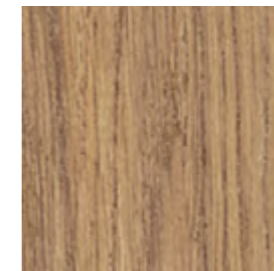
Red
CODE 3020

*Kolory stelaży w poszczególnych konfiguracjach do potwierdzenia w cenniku / Available colours of the frames to be confirmed with the price list / Die verfügbaren Gestellfarben entnehmen Sie bitte der Preisliste

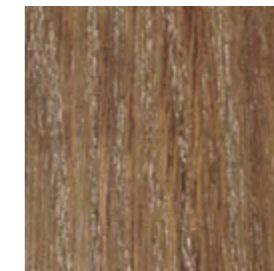
Kolory wykończeń w druku mogą różnić się od rzeczywistych / Finishings colours in print may be different from actual colours / Die dargestellten Farben können aus drucktechnischen Gründen von den realen Farben abweichen

Fan, Stoliki/Tables/Tische SW

Drewno (dąb) / Wood (oak) / Holz (Eiche)



HO6



HO12



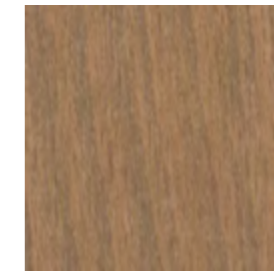
HO11

Com, Chic, Chic Air, Ellie^{Pro},
Fan, Nu, October, Stoliki/
Tables/Tische SW

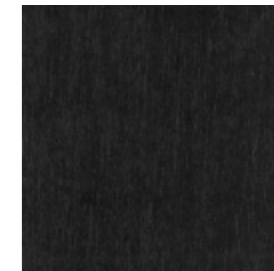
Drewno (buk) / Wood (beech) / Holz (Buche)



H6 (matching NB)



H12



H5

MyTurn Sofa, SoftBox

Okleiny naturalne modyfikowane /
Natural modified veneers / Modifizierte Edelfurniere



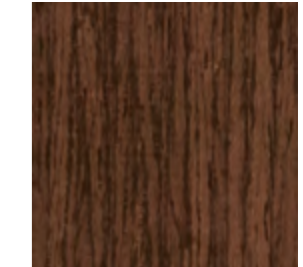
HM10



HM11



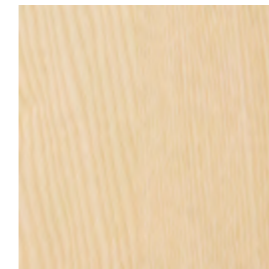
HM12



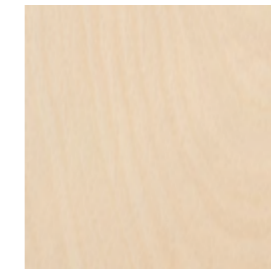
HM20

Chic Stoliki/Tables/Tische,
Com, Revo Stoliki/Tables/
Tische

Okleiny naturalne / Natural veneers / Edelfurnier



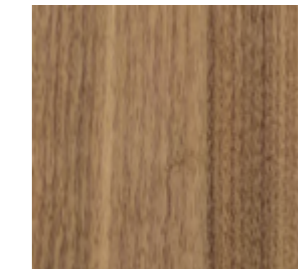
Ash
NA



Beech
NB (matching H6)



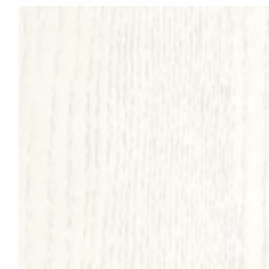
Oak
NO



Walnut
NW

Chic Stoliki/Tables/Tische,
Com, Revo Stoliki/Tables/
Tische

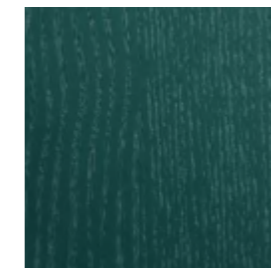
Okleiny naturalne kolorowe /
Coloured natural veneers / Edelfurniere-Farben



White Ash
CNA01



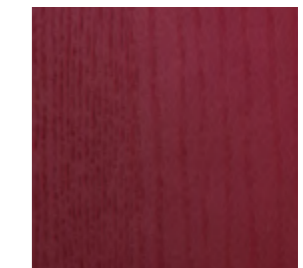
Black Ash
CNA02



Deep Green Ash
CNA05, RAL 6004

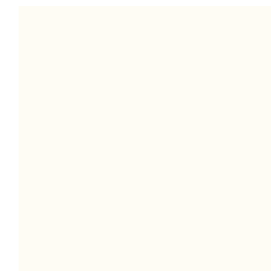


Navy Blue Ash
CNA06, RAL 5003



Burgundy Ash
CNA07, RAL 3005

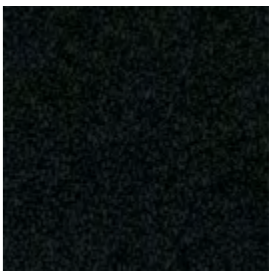
MyTurn Sofa Stoliki/Tables/
Tische, SoftBox



White
LW01, RAL 9016

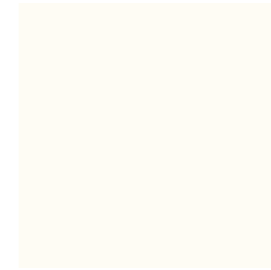


Grey
LW04, RAL 7037

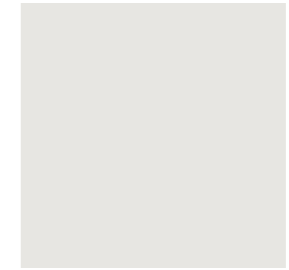


Black
LW02, RAL 9011

Com, Revo Stoliki/Tables/
Tische, Stoliki/Tables/Tische
SH/SR, Wall In



White
LW01, RAL 9016



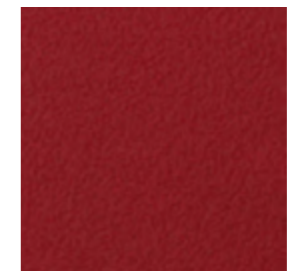
Light Grey
LW03 NCS 2500-N



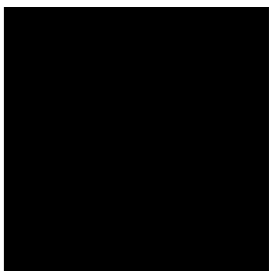
Grey
LW04, RAL 7037



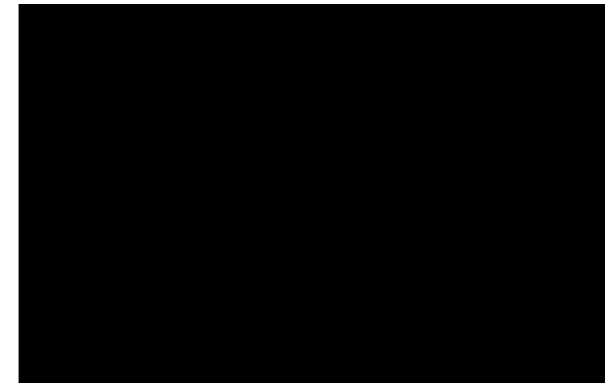
Navy Blue
LW06, RAL 5003



Light Burgundy
LW07, RAL 3004



Black
LW02, RAL 9011



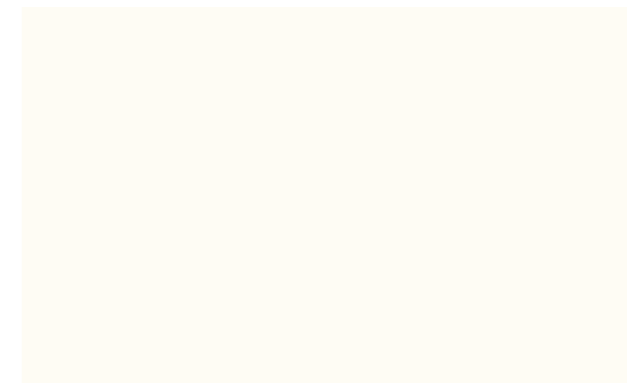
Black
G2



Graphite
G4, RAL 7042



Beige
G3, RAL 7044



White
G1

Extended Collection

Producent / Manufacturer / Hersteller	Nazwa Tkaniny / Fabric Name / Stoffe	Grupa Cenowa Ext. / Price Group Ext. / Preisgruppe Ext.
Camira	Blazer	②
	Era	①
	Halcyon	②
	Main Line Flax	②
	Rivet	①
	Urban	②
	X2	②
	Xtreme CS	①
Crevin	Arc	②
	Galaxy	②
Gabriel	Chili	③
	Comfort+	④
	Fame	②
	Go_Check	③
	Go_Couture	③
	Go_Uni	③
	Just	②
	Mica	②
	Step Melange	①
	Tonal	②
Kvadrat	Atlas	②
	Canvas	③
	Coda	④
	Divina Melange	④
	Divina	④
	Melange Nap	②
	Remix	②
	Revive	①
	Re-wool	②
	Steelcut	③
	Steelcut Trio	③
	Twill Weave	③
	Skai	Palena
Palma		②
Parotega		②
Sotega		①
Spradling	Chronos	①
	Silvertex	①
	Silvertex B1	②
	Valencia B1	②
Svensson	Semi	①

Legenda / Legend / Legende :

- Możliwość wykonania produktu w podanej tapicerce / Possibility of making the product in the given upholstery / Bezug möglich in diesem Stoff
- Uchwyt zawsze w tkaninie Next / Handle always in fabric Next / Schlaufe zur Höheneinstellung erhältlich nur im Stoff "Next"
- ◇ Możliwość wykonania samego siedziska w danym obiciu / Possibility of making only the seat in the given upholstery / Nur Sitzbezug in diesem Stoff möglich
- Brak możliwości wykonania wyrobu w danym obiciu / Impossibility of making a product in a given upholstery / Bezug nicht möglich in diesem Stoff
- ✕ Brak możliwości wykonania ścianek w danej tapicerce / No possibility of making the walls in the given upholstery / Die Wände nicht möglich in diesem Stoff

Producent / Manufacturer / Hersteller	Spradling				Svensson
Producent / Manufacturer / Hersteller	Chronos	Silvertex	Silvertex B1	Valencia B1	Semi
Grupa Cenowa Ext. / Price Group Ext. / Preisgruppe Ext.	①	①	②	②	①
Accis ^{Pro}	●	●	●	●	●
Acos ^{Pro}	●	●	●	●	●
Action	●	●	●	●	●
Ariz	●	●	●	●	●
Bit	●	●	●	●	●
Chic	●	●	●	●	●
Chic Air	–	–	–	–	●
Chic Lounge	–	–	–	–	●
Com	●	●	●	●	●
Ellie ^{Pro}	–	–	–	–	●
Fan	●	●	●	●	●
LightUp	●	○	●	●	●
Mickey	–	◇	●	●	●
Motto	●	●	●	●	●
MyTurn	–	–	–	–	●
MyTurn Sofa	●	●	●	●	–
Normo	–	–	–	–	●
Nu	●	●	●	●	●
October	●	●	●	●	●
Poduszki / Cushions /Kissen	●	●	●	●	●
Revo	–	–	–	–	●
SoftBox	✕	✕	✕	✕	●
Sorriso	●	●	●	●	●
Trillo ^{Pro}	●	●	●	●	●
Vancouver Lite	●	●	●	●	●
Vancouver Oto	●	●	●	●	●
Veris Net	●	●	●	●	●
Violle	●	●	●	●	●
Wall In	✕	✕	✕	✕	●
Xenon	●	●	●	●	●
Xenon Net	●	●	●	●	●
Zoo	●	●	●	●	●